



SERANGOON JUNIOR COLLEGE
JC2 PRELIMINARY EXAMINATION 2017
Higher 2

GEOGRAPHY

9751/02

Paper 2 Data Response Questions

INSERT

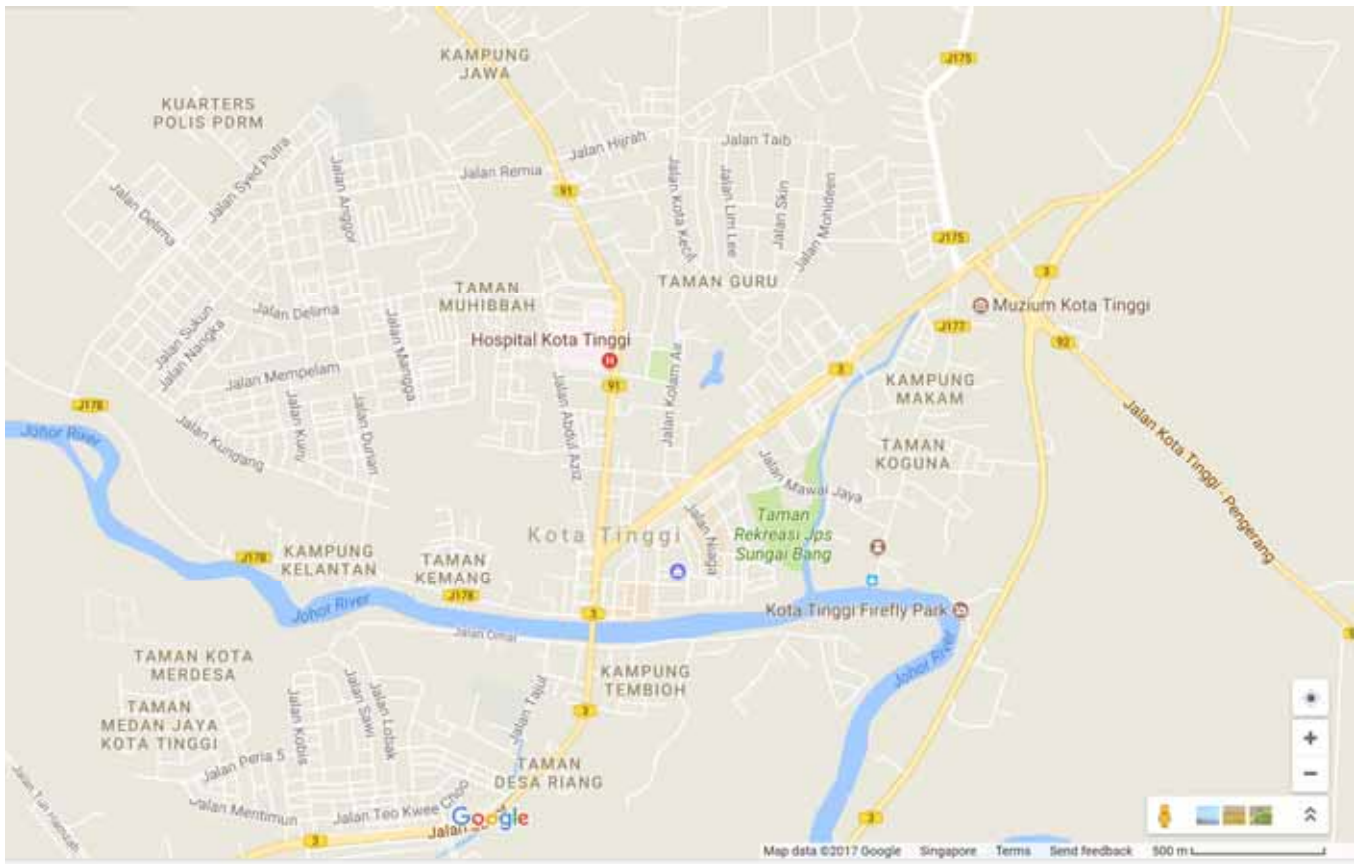
Wednesday
13 Sept 2017
3 hours

READ THESE INSTRUCTIONS FIRST

This insert contains all the Resources referred to in the questions.

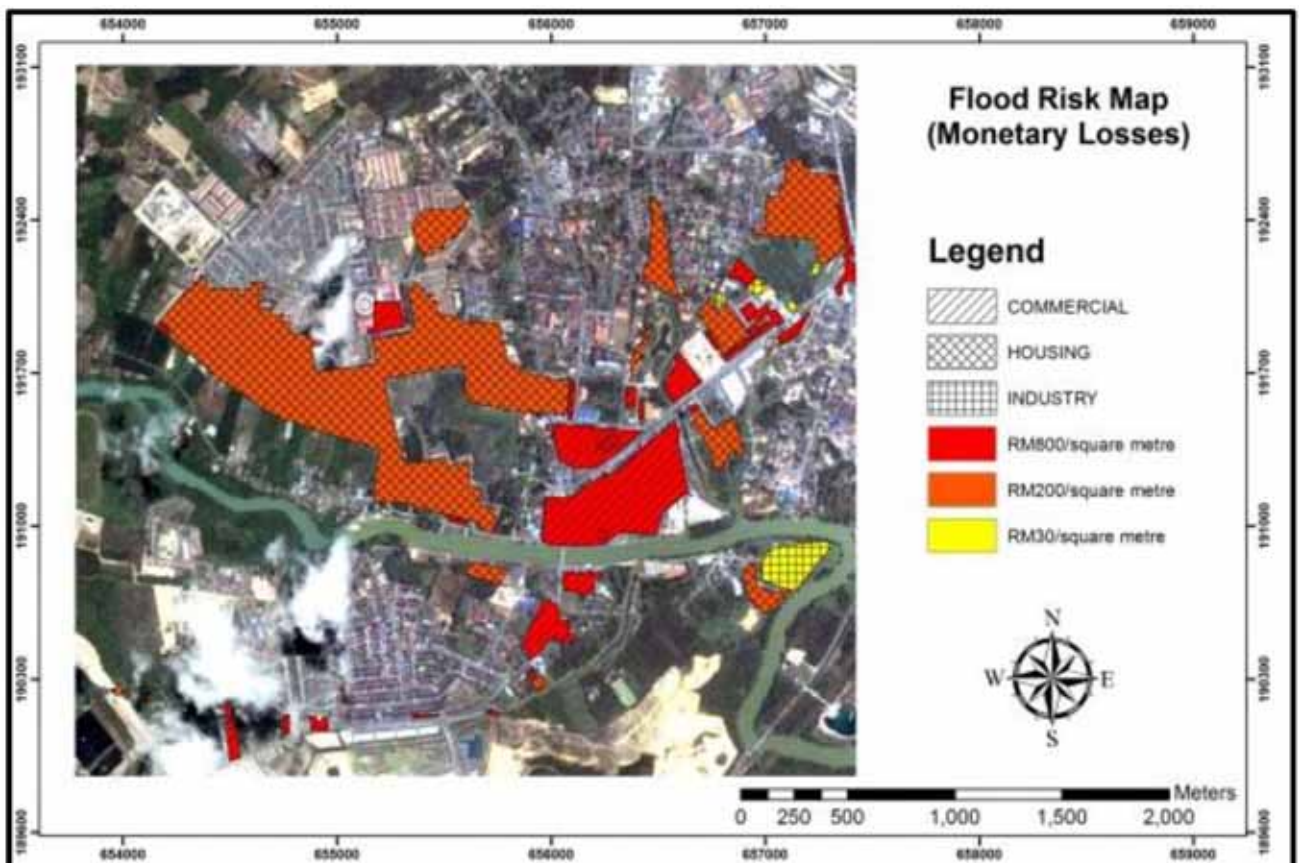
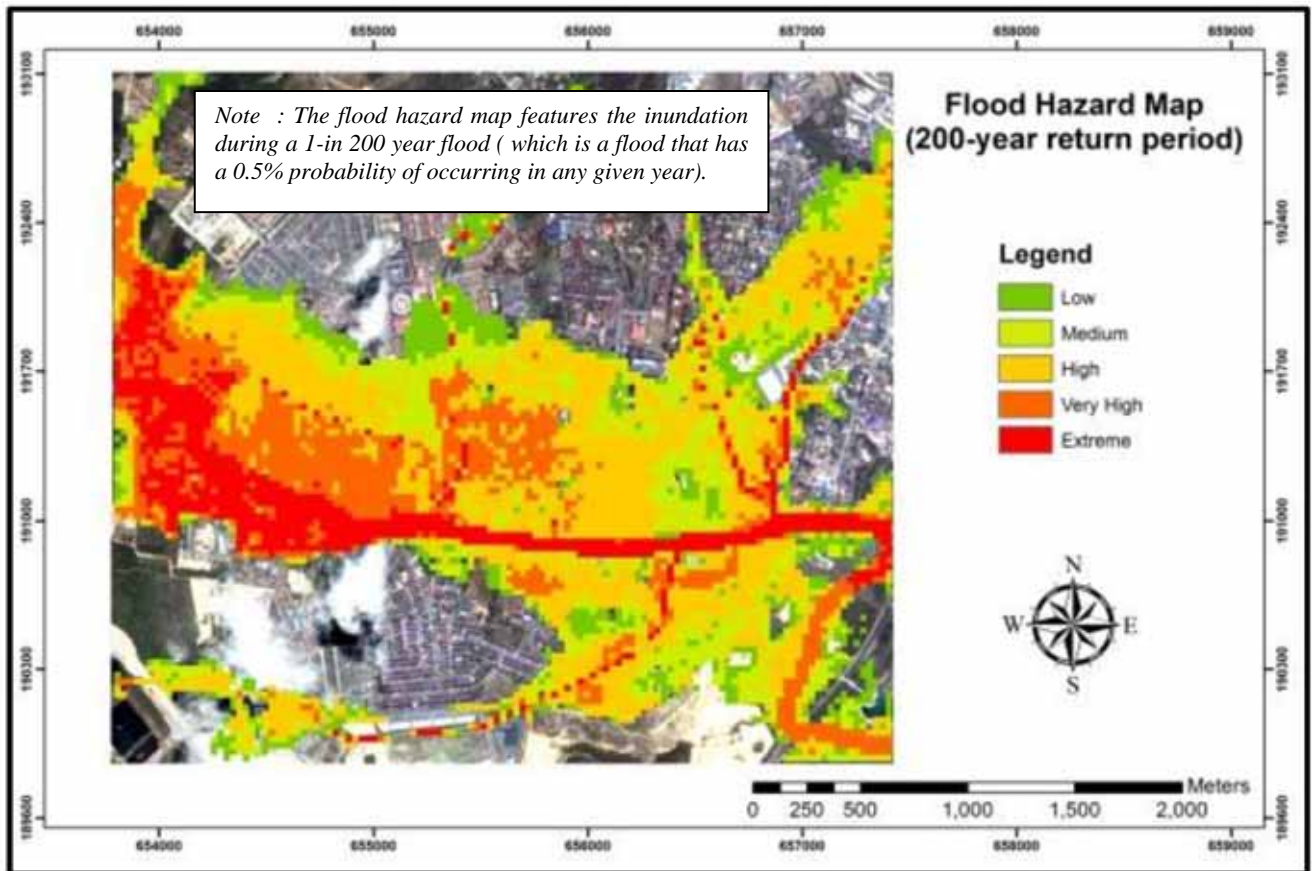
Resource 1 for Question 1

Map of Kota Tinggi (Malaysia)



Resource 2 for Question 1

Flood Hazard map and Flood risk map of Kota Tinggi (Malaysia)



Resource 3 for Question 1

Sample of the Questionnaire survey

Introduction : I am doing a geography project on flood perception risk. This survey is likely to take 15 mins.

- 1) Age : _____
- 2) Gender : _____
- 3) Living situation :
 - ☐ Couple family with children
 - ☐ Couple family without children
 - ☐ One parent family
 - ☐ Other family
 - ☐ Alone
 - ☐ Other (specify)
- 4) Employment status : _____
- 5) Household gross income : _____
- 6) Highest educational qualifications : _____
- 7) How long have you stayed in this house ? _____
- 8) When was the last time the house you lived in was flooded ? _____
- 9) When do you think your house is likely to be affected by a flood ?
 - ☐ Within the next year
 - ☐ Within the next 5 years
 - ☐ Within the next 20 years
 - ☐ In over 50 years
 - ☐ Never
- 10) How concerned are you about floods? _____

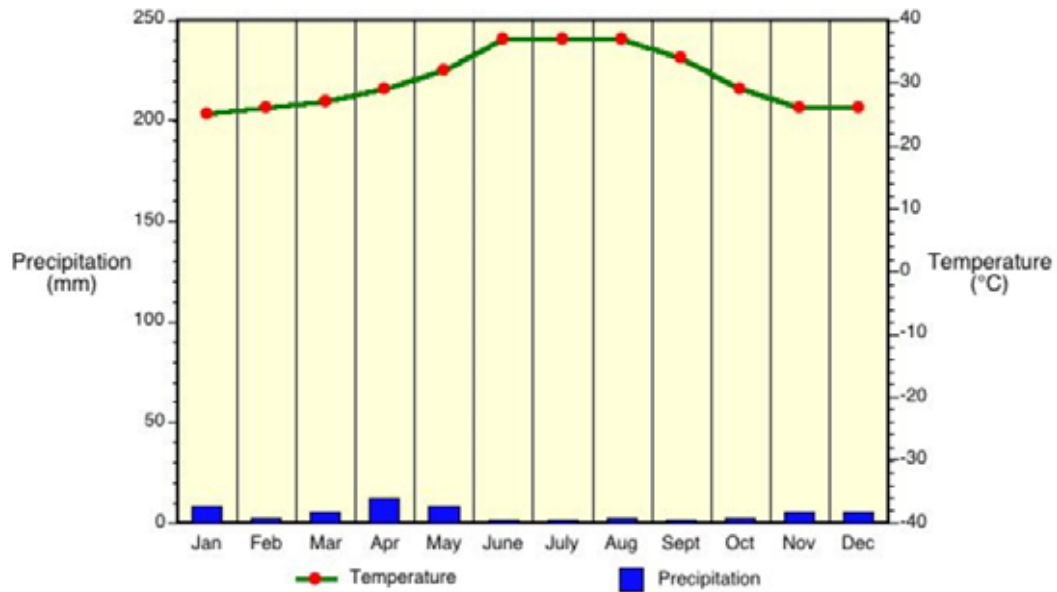
- 11) What has you or your family done to prepare for a flood emergency ?

- 12) Do you believe it is necessary to make preparations for flooding because of the high flood risk in the region ?

- 13) Are you insured against floods? Yes/No

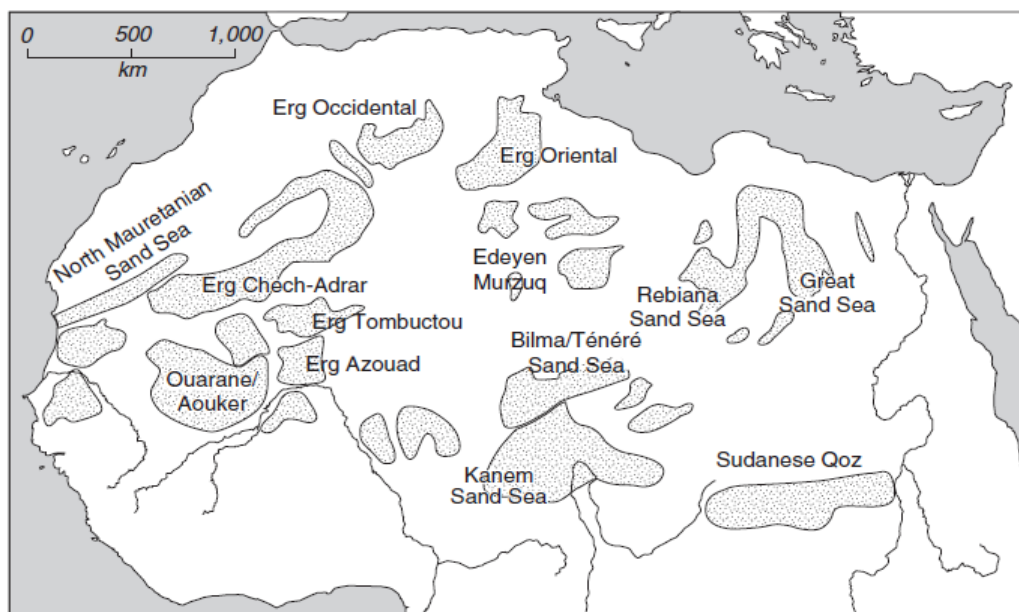
Resource 4 for Question 2

Mean monthly temperature and precipitation values for Berbera, Somalia
(Latitude 10.5° N)



Resource 5 for Question 2

The main sand seas/ergs of the Sahara and Sahel today



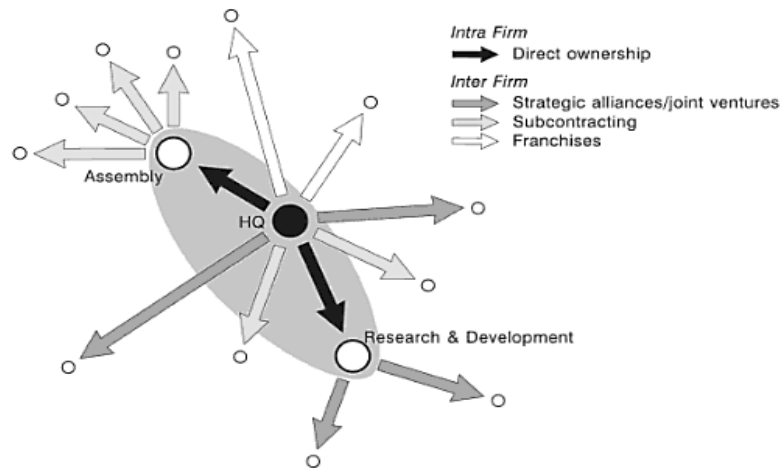
Resource 6 for Question 2

A desert landform in the Sahara



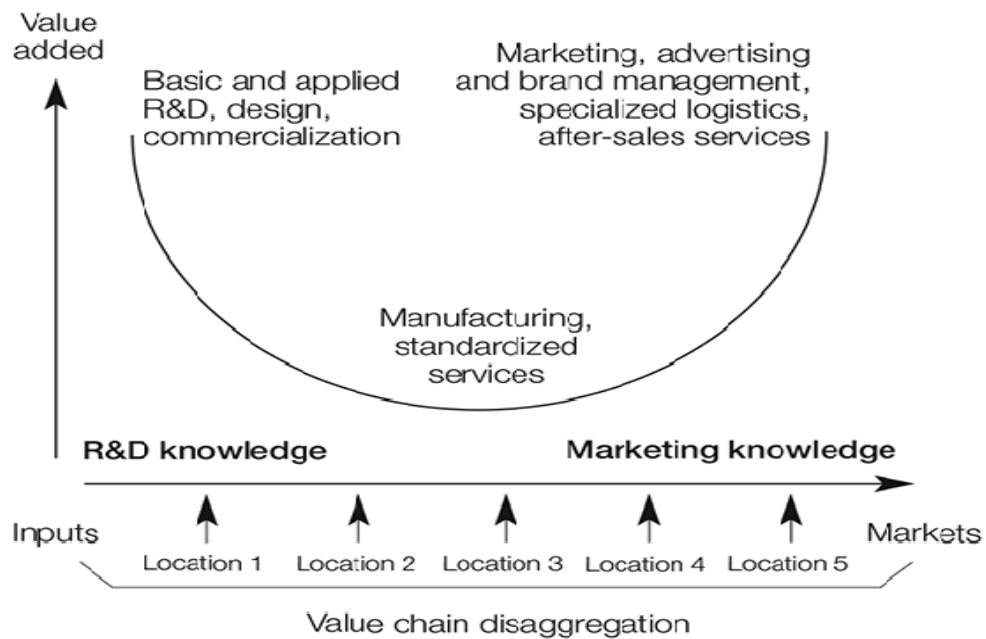
Resource 7 for Question 3

Intra-firm and inter-firm networks of a TNC (transnational corporation)



Resource 8 for Question 3

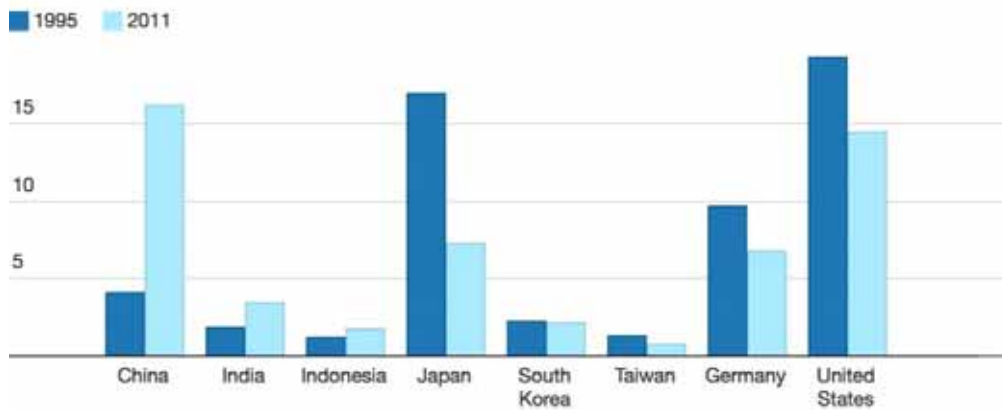
Spatial distribution of the global value chain



Source: Mudambi (2008).

Resource 9 for Question 3

Share of manufacturing value chain income (%) of developed countries and Asian Newly Industrialised Economies between 1995 and 2011



Source: Global Value Chain and the Competitiveness of Asian Countries, Kiyota Kozo et al

Resource 10 for Question 4

Protesters gather outside Wal-Mart's offices in Gurgaon, India



Resource 11 for Question 4

Location of the Makoko Slum, Lagos (Nigeria)



Resource 12 for Question 4

Photographs of Makoko Slum, Lagos (Nigeria)



Resource 13 for Question 4
Public Health status in Makoko Slum

Comparing the maternal mortality rate*

Makoko	Lagos national figure
1050 deaths per 100,000 live births	545 deaths per 100,000 live births

*Note : Maternal mortality rate (MMR) is the annual number of female deaths per 100,000 live births from any cause related to or aggravated by pregnancy or its management

Place of delivery for expectant mothers in Makoko

Place of delivery	Makoko (n = 1602)
At home	7.8%
Private health facility	57.1%
Government facility	4.1%
Neighbourhood facility	4.7%
Faith based facility	0.7%
MSF health facility	8.9%
Others	0.8%
Not indicated	23.7%
Total deliveries in health facilities	70.7%

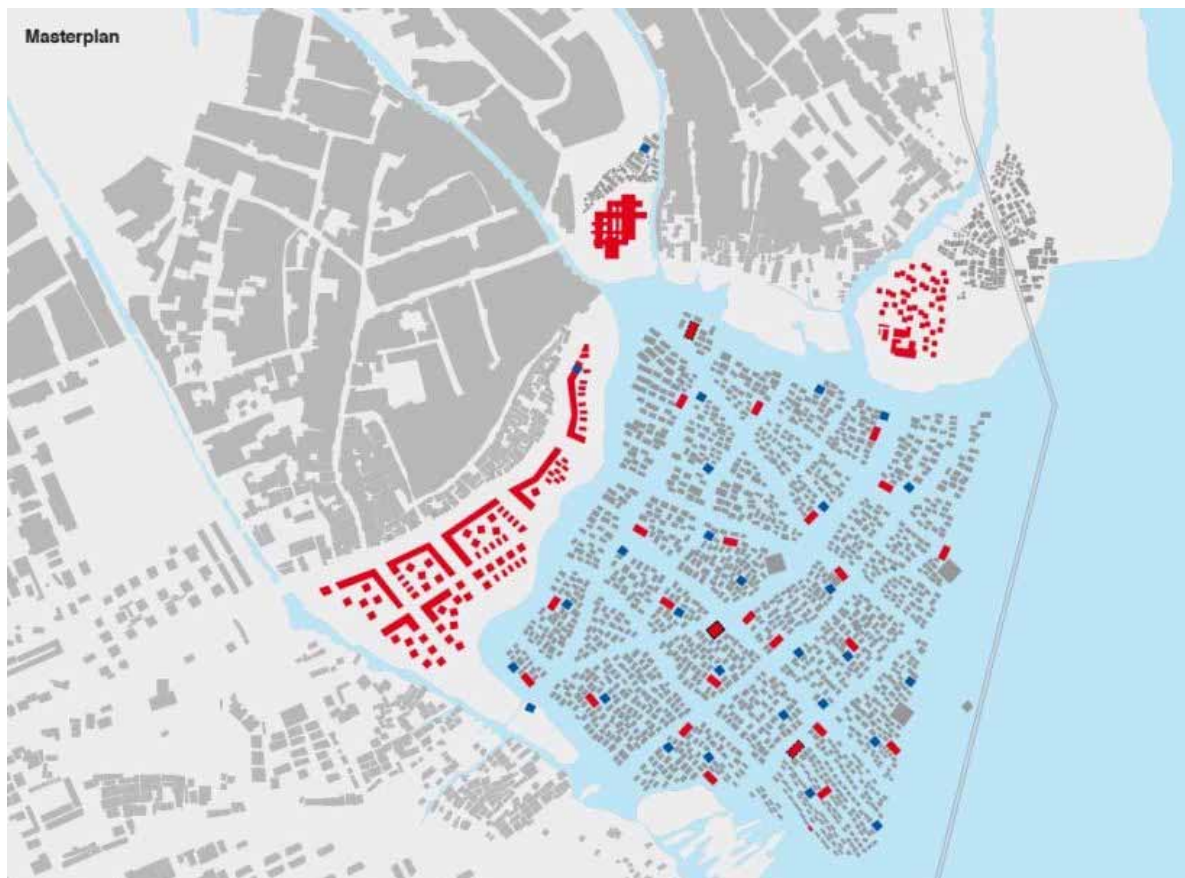
Source : Anastasi E, Ekanem E, Hill O, Adebayo Oluwakemi A, Abayomi O, Bernasconi A (2017) Unmasking inequalities: Sub-national maternal and child mortality data from two urban slums in Lagos, Nigeria tells the story. PLoS ONE 12(5): e0177190.

Common diseases in Makoko

Diseases	Makoko
Malaria	93%
Diarrhoea	59%
Cough	45%

Source : Living Conditions and public health statues in three urban slums of Lagos, Nigeria/ South East Asia Journal of Public Health 2013;3(1):36-41

Resource 14 for Question 4
Makoko Waterfront Regeneration project



On land : Redevelopment approach

- New interventions :**
- Hospital and research center for water related diseases
 - Eco-hotel
 - Beach houses

- schools**

On water : Redevelopment approach

- New interventions :**
- Neighbourhood hotspots with renewable energy production
- Recycling stations**
- Walk-in clinic (casualty or emergency clinic)**
- schools**