



**National Junior College  
SH2 Preliminary Examinations 2017**

**GEOGRAPHY  
Paper 2 Data Response Questions**

**9751/02**

**INSERT**

**3 Hours  
28 August 2017**

This insert contains all the Resources referred to in the questions.

This document consists of **14** printed pages.

Resource 1 for Question 1  
Map of Sites X, Y & Z along Punggol Waterway



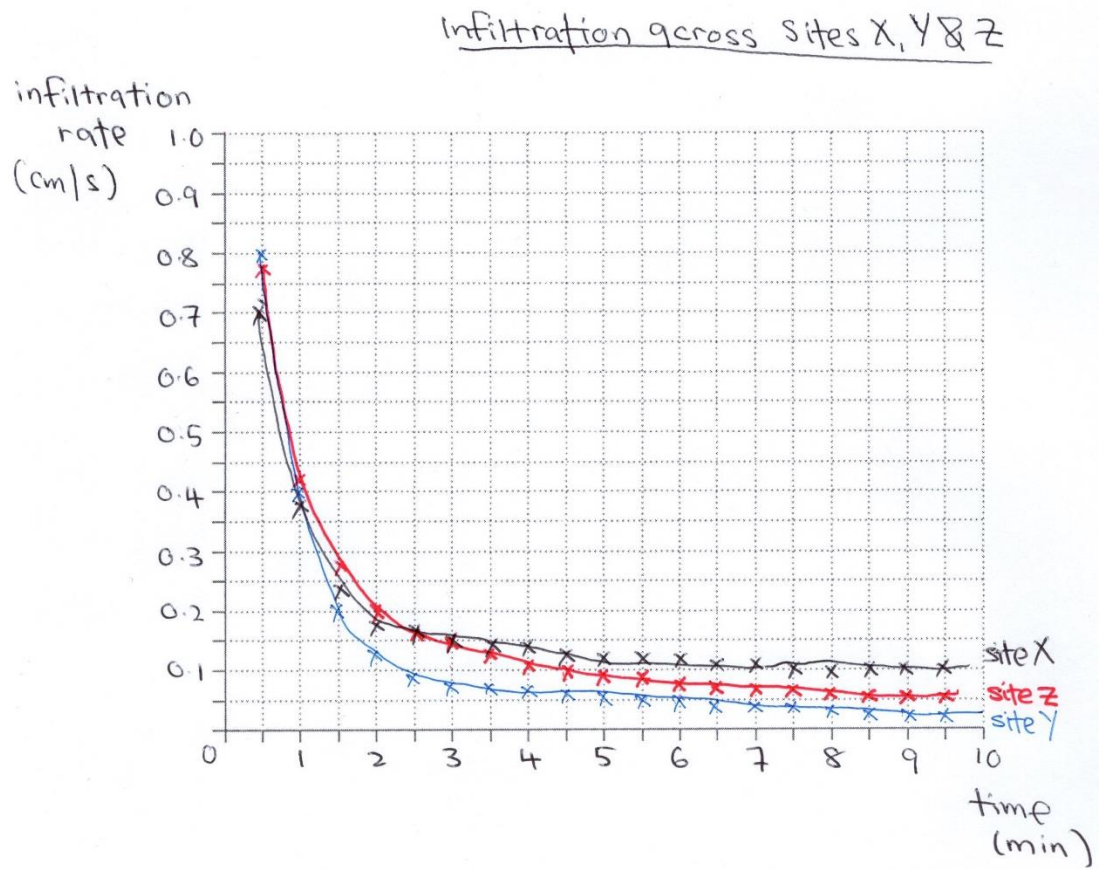
Source: <http://punggolwaterway.com/wp-content/uploads/2014/07/PWWmap.jpg>; amendments original

**Resource 2 for Question 1**  
**River velocity across Sites X, Y & Z**

Velocity (m/s) via Float Method				
	Reading 1	Reading 2	Reading 3	Average
Site X	0.37	1.41	0.66	0.81
Site Y	0.75	1.21	1.07	1.01
Site Z	1.08	0.42	0.53	0.68

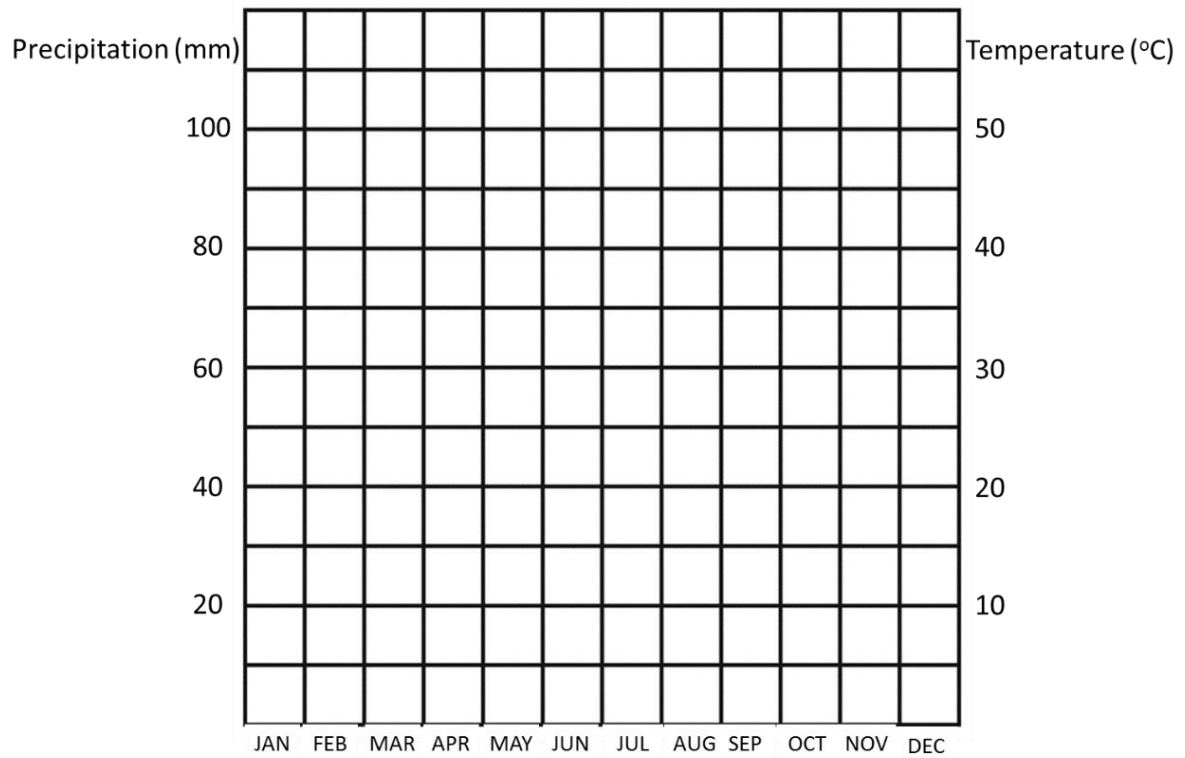
Source: Original

Resource 3 for Question 1  
Infiltration curves at Sites X, Y & Z



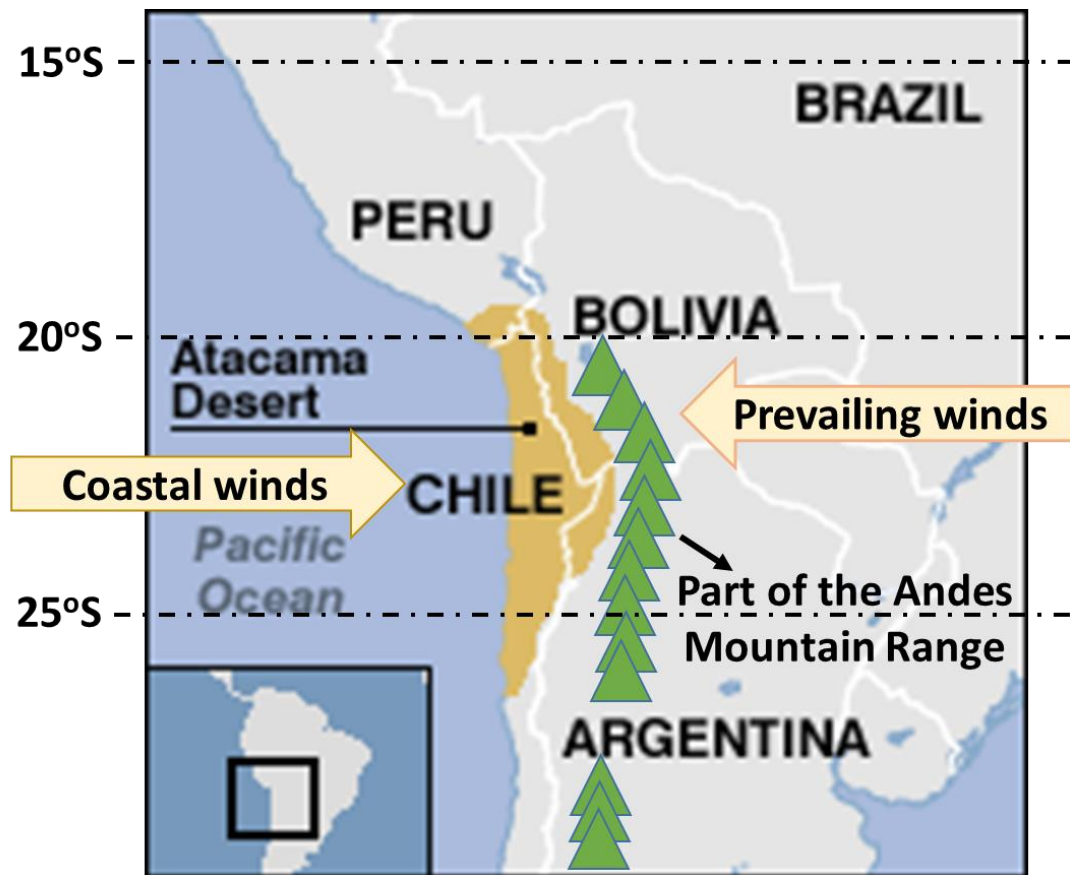
Source: Original

**Resource 4 for Question 2**  
**Climograph of the Atacama Desert**



Source: Original

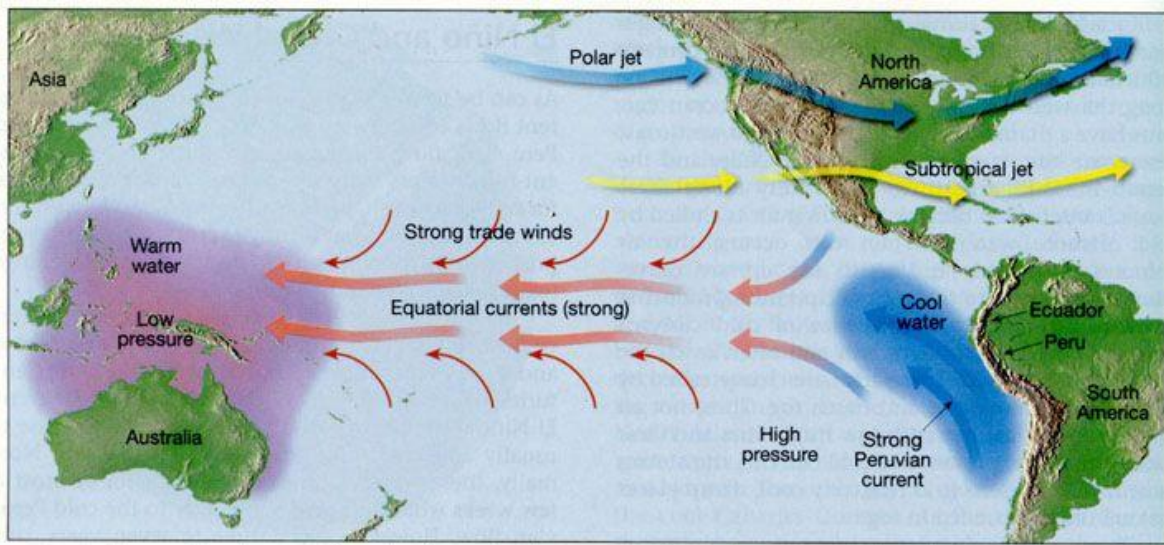
Resource 5 for Question 2  
The location of the Atacama Desert



Source: [http://origins.osu.edu/sites/origins.osu.edu/files/review44\\_img4.jpg](http://origins.osu.edu/sites/origins.osu.edu/files/review44_img4.jpg); amendments  
original



**Resource 6 for Question 2**  
**Ocean current flows in the South Pacific Ocean**



Source: [http://origins.osu.edu/sites/origins.osu.edu/files/review44\\_img4.jpg](http://origins.osu.edu/sites/origins.osu.edu/files/review44_img4.jpg)

**Resource 7 for Question 2**  
**Landscape in the Atacama Desert**



Source: <http://www.nationalgeographic.com/travel/destinations/south-america/chile/explore-chile-atacama-desert-stargazing/#/valley-moon-atacama-desert-chile.jpg>

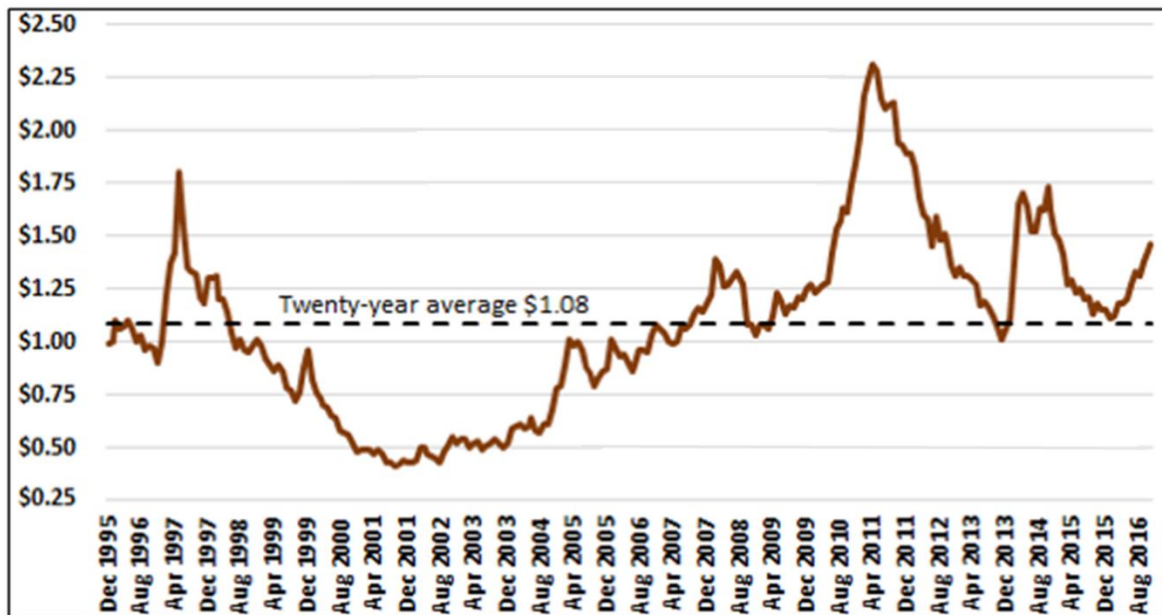


Resource 8 for Question 3  
Global coffee production



Source: <https://u.osu.edu/ryanrichardscoffeecommoditychain/sample-page/>

**Resource 9 for Question 3**  
**Average monthly coffee prices at source from Dec 1995 to Aug 2016**



Source: <https://fronteranews.com/news/global-macro/winners-and-losers-in-the-coffee-economy/>

**Resource 10 for Question 3**  
**News article - “Gryphon blend: coffee with a cause” (2016)**

Gryphon blend: coffee with a cause

Nov 23, 2016 10:00 AM by: Tony Saxon

A new coffee being sold and slurped in Guelph starting this weekend is a coffee with a cause.

Planet Bean will officially launch the new Gryphon blend coffee this Saturday at an event held at its Wyndham Street location from 10:30 to 12:30.

A joint venture between the University of Guelph and Planet Bean, the Gryphon blend has a strong social element, says Planet Bean's Bill Barrett.

The Gryphon coffee is a blend of Café Femenino beans from northern Peru. Café Femenino is a women's-only cooperative that sees women grow and sell their own coffee and keep the revenue it generates, empowering them and giving them more resources than they would traditionally have.

To maintain that connection, a portion of the sales generated by Gryphon blend will be used to fund women's athletic scholarships at the U of G.

"Ten years ago they asked us if we were interested in selling their coffee," said Barrett, who has visited Peru twice.

"The women control the whole supply chain. It's had a phenomenal impact on their lives. It's really an incredibly cool project."

Scott McRoberts, Director of Athletics at the U of G, said it's a great partnership.

"The proceeds are to support our ongoing commitment to growing female scholarship money for varsity athletes," McRoberts said.

"We're very proud to be working with a locally owned business who provides quality products and services and whose principles align with the Universities.

"We're committed to improving our student-athletes experience and through partnerships like this with leading local businesses we can continue to invest in our community and raise the profile of our programs," McRoberts said.

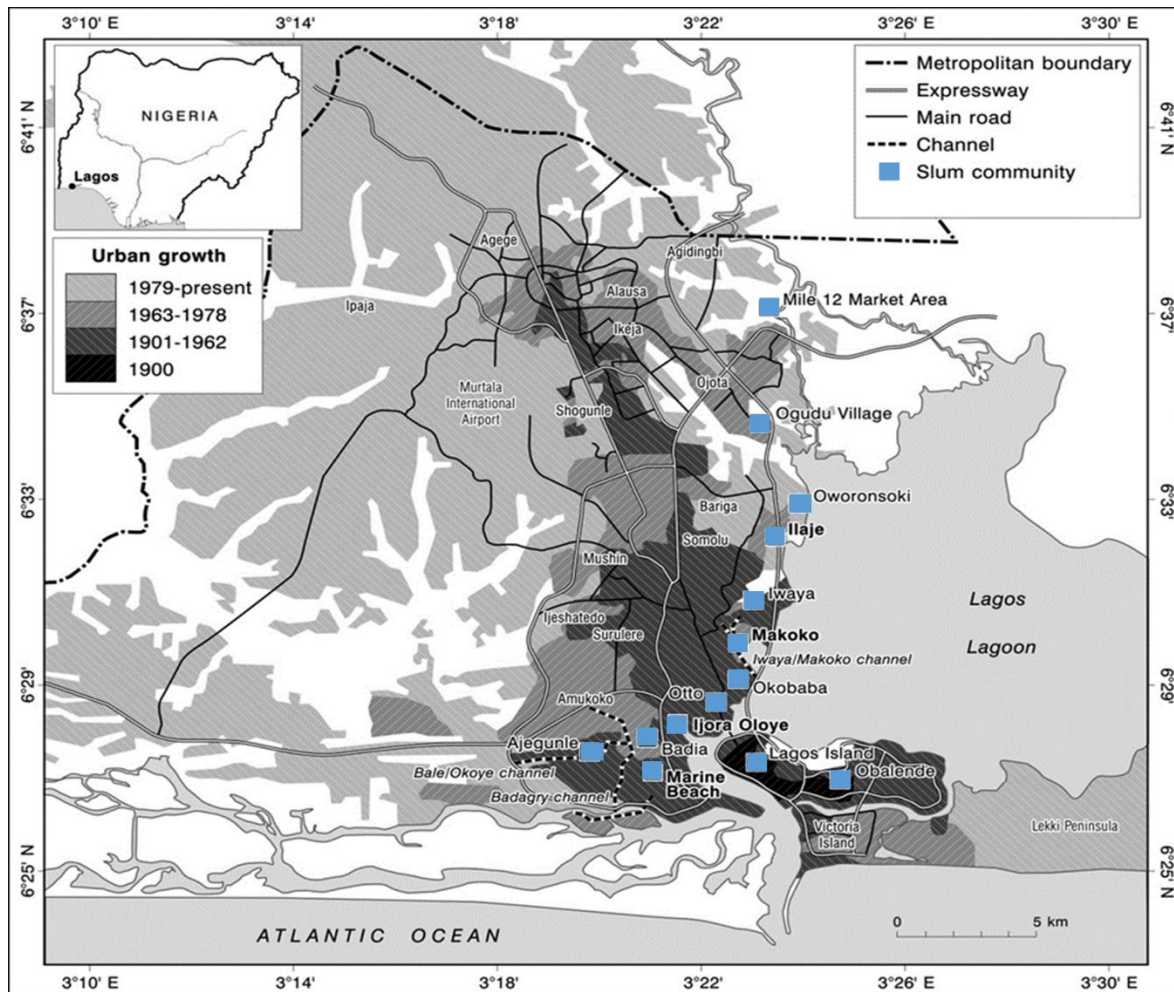
Gryphon blend will be sold by the cup and in bulk at Planet Bean's three main locations and it will be sold by the cup and bagged at the new kiosk opening on the U of G campus in the College of Business and Economics.

Barrett said it will be also sold by the bag at the U of G bookstore.

It is a dark blend, similar to Planet Bean's most popular Freedom Fighter grind.

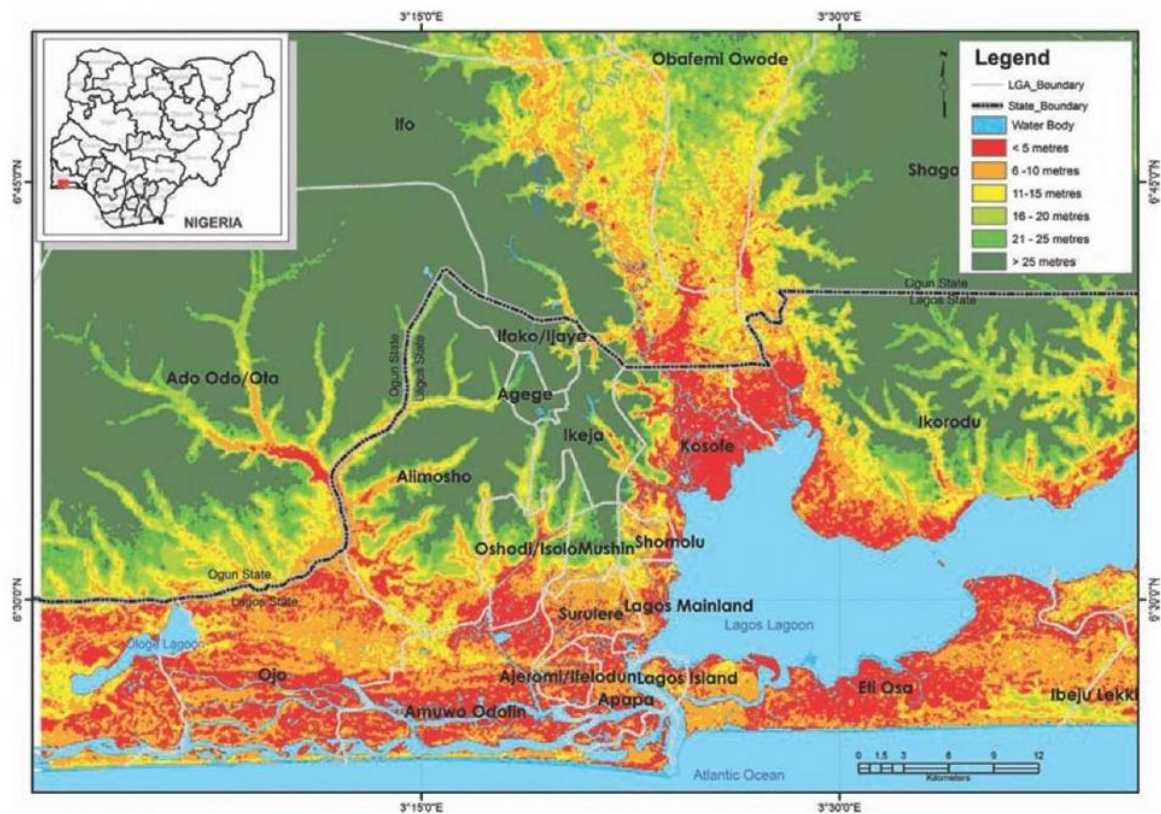
Source: <https://www.guelphtoday.com/local-news/gryphon-blend-coffee-with-a-cause-470842>

**Resource 11 for Question 4**  
**Urban growth and slum communities in Lagos**



Source: <http://slideplayer.com/slide/8484592/>; amendments original

## Resource 12 for Question 4 Topographic map of Lagos



Source: <http://what-when-how.com/climate-change/climate-risk-assessment-in-selected-i-case-studies-cities-disasters-and-climate-risk-part-3/>



**Resource 13 for Question 4**  
**Flooding in Lagos**



Source: <http://edition.cnn.com/2012/06/14/world/africa/lagos-climate-change-c40/index.html>