

PIONEER JUNIOR COLLEGE
JC2 Preliminary Examination
Higher 2

GEOGRAPHY

9751/02

Paper 2 Data Response Questions
Insert

15 September 2017

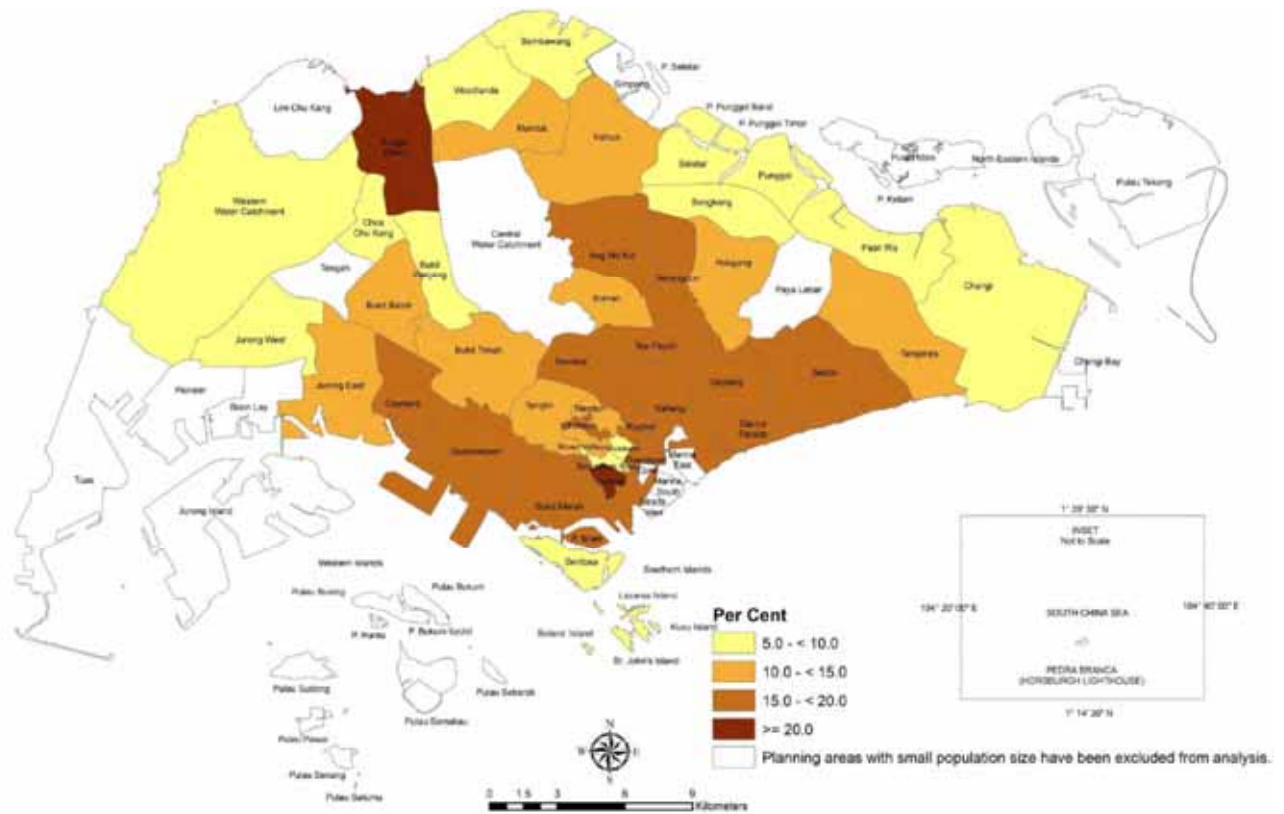
3 hours

READ THESE INSTRUCTIONS FIRST

This Insert contains all the Resources referred to in the questions.

Resource 1 for Question 1

Proportion of elderly population aged 65 and above by planning area, 2016



Resource 2 for Question 1

Elderly friendly fixtures by type of dwelling, 2011 (%)

| Contained elderly-friendly features | Total | Type of dwelling | | | | | |
|-------------------------------------|-------|------------------|---------------|-------------|-------------|-----------------------|--------------------|
| | | Public flat | 1-2 room flat | 3 room flat | 4 room flat | 5 room or larger flat | Private flat/house |
| Yes | 25.9 | 26.0 | 48.5 | 25.5 | 20.7 | 26.0 | 24.8 |
| No | 74.2 | 74.0 | 51.5 | 74.5 | 79.3 | 74.0 | 75.2 |

Resource 3 for Question 1

Sources of Social Activity for Elderly, 2014

| | At least once a month |
|--|-----------------------|
| Family and friends | |
| Get-together with family members (children, grandchildren or siblings) | 88.9% |
| Get-together with friends or neighbours | 62.4% |
| Community events | |
| Participate in grassroots or community activities | 8.4% |
| Use a senior activity club | 6.9% |
| Others | |
| Attend a course or class | 8.8% |
| Attend a religious gathering | 39.4% |

Resource 4 for Question 1

Living arrangement of elderly by age, 2011 (%)

| Living arrangement | 65-74 | 75 and above |
|--|-------|--------------|
| Total | 100 | 100 |
| Living alone | 17.5 | 16.6 |
| Living with spouse only | 15.4 | 11.8 |
| Living with spouse and children/grandchildren | 38.7 | 26.9 |
| Other living arrangements (e.g with other relatives, nursing homes) | 28.4 | 44.7 |

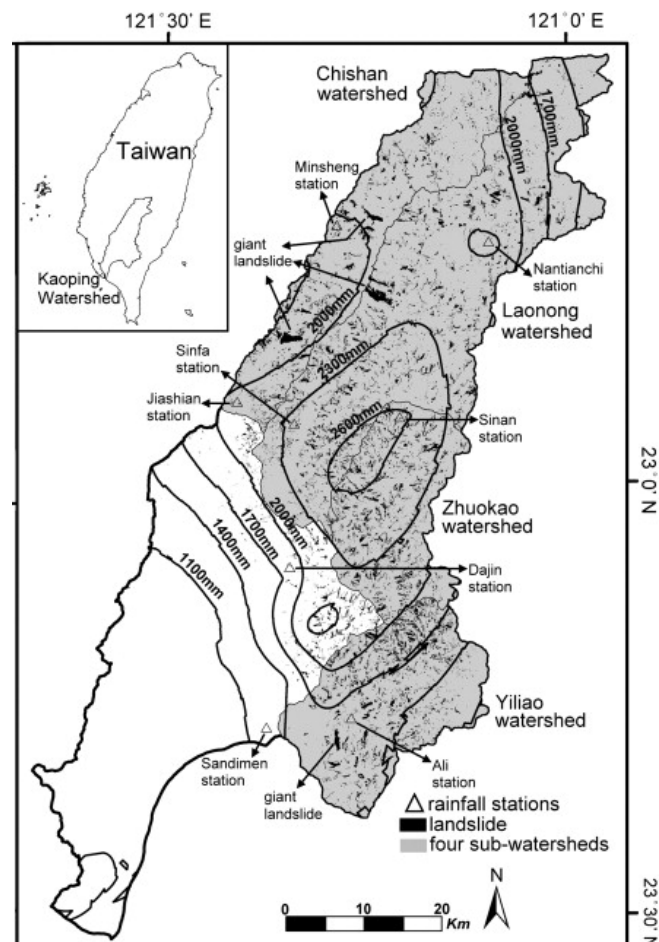
Resource 5 for Question 2

Path of Typhoon Morakot



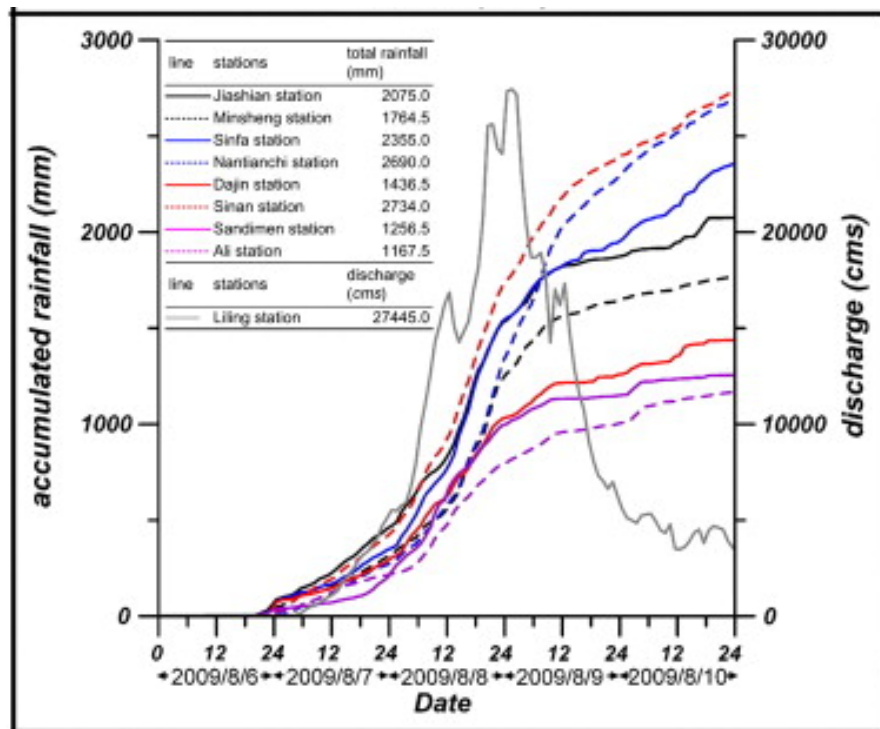
Resource 6A for Question 2

Distribution of Rainfall in Taiwan after the passing of Typhoon Morakot



Resource 6B for Question 2

Accumulated rainfall and river discharge at the various rainfall stations



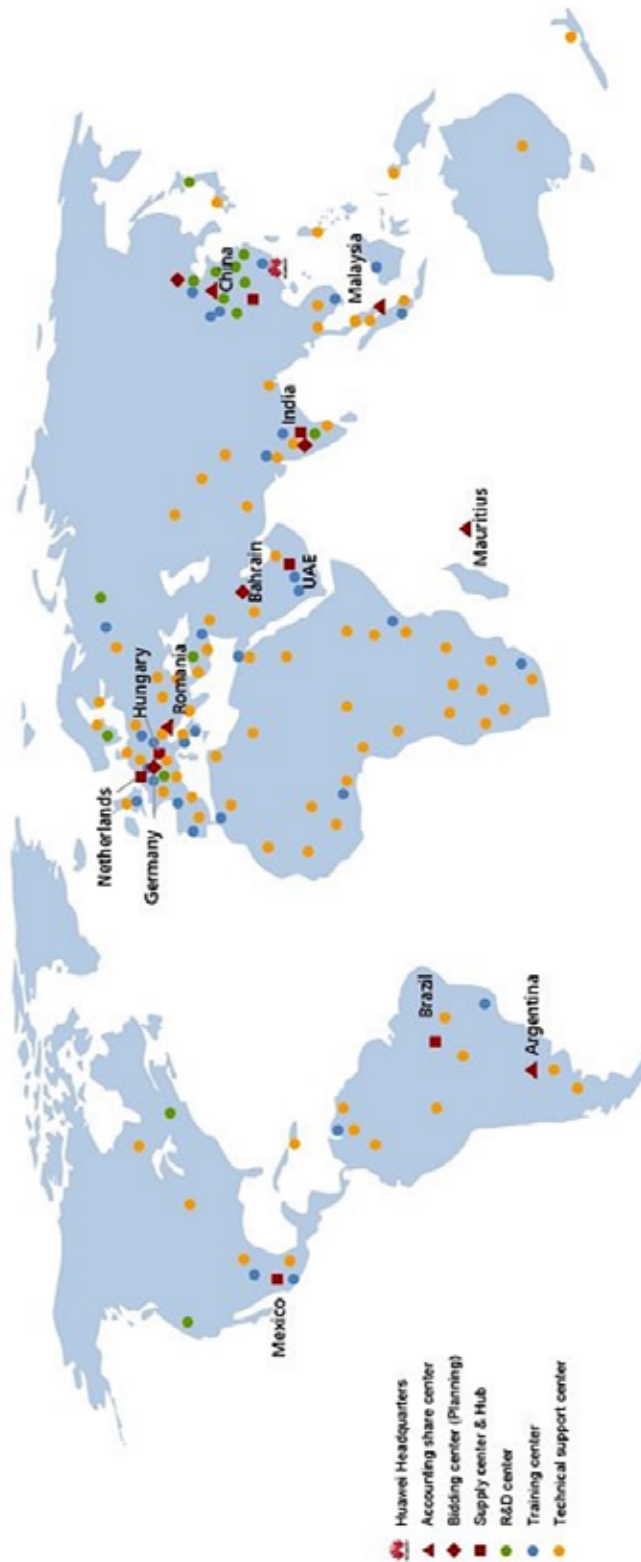
Resource 7 for Question 2

Mass Movement in Southern Taiwan after Typhoon Morakot



Resource 8 for Question 3

Huawei's Global Production Network



14 Regional Headquarters, operations in **140+** countries
150,000+ employees with **150+** nationalities worldwide, **73%** recruited locally

Resource 9 for Question 3

Market share ranking of Smartphone brands based on annual global production volume

| Rankings | 2015 Company | Market Share | 2016 Company | Market Share | 2017 Company | Market Share |
|----------|-----------------|--------------|-----------------|--------------|-----------------|--------------|
| 1 | Samsung | 24.70% | Samsung | 22.80% | Samsung | 22.60% |
| 2 | Apple | 18.20% | Apple | 15.30% | Apple | 15.60% |
| 3 | Huawei | 8.30% | Huawei | 9.60% | Huawei | 11.10% |
| 4 | Lenovo | 5.40% | OPPO | 7.20% | OPPO | 8.50% |
| 5 | LG | 5.20% | BBK/vivo | 6.00% | BBK/vivo | 7.10% |

Resource 10 for Question 3

Article on Huawei in India

Huawei sets up biggest global service centre in Bangalore, invests Rs 136 crore

Huawei is setting up its biggest Global Service Centre (GSC) in Bangalore at an investment of Rs 136 crore (\$21,309,934 USD).

The new GSC will to support Huawei's domestic and international telecom carrier customers in 30-plus markets across Asia, Africa and Middle East. It will handle over 50 projects across these global markets.

"Some 1,000-odd techies, comprising engineers and network operations specialists at the GSC will deliver the gamut of network monitoring/management related services to clients in India and overseas markets," Huawei India CEO Jay Chen said Friday.

The new GSC, he said, supports Huawei's 'Make In India vision' by harnessing local talent, coupled with the infusion of hi-tech R&D expertise".

Source:http://economictimes.indiatimes.com/articleshow/53875236.cms?utm_source=contentofinterest&utm_medium=text&utm_campaign=cppst

Resource 11 for Question 3
India's 'Make In India' Initiative

MAKE IN INDIA (UPDATES)

Infrastructure

- India needs ₹26 trillion for infrastructure financing in 5 years
- Union minister for road transport, highways and shipping announced ₹7,000 crore infra projects for Nagpur

Smart cities

- Plan to make 100 smart cities (list of first 20 cities already announced)
- Requirement of \$150 billion, out of which \$120 billion expected from private sector

Railways and roads

- Railways to invest \$140 billion, Japan to modernize 400 stations
- Indian government ships "made in India" metro coaches to Australia
- Union minister for road transport, highways and shipping announced a package of ₹80,000 crore for Madhya Pradesh for various infrastructure works in the state including conversion of state roads into national highways and laying of a railway line
- Indian Railways undertakes Public-Private Partnership (PPP) projects worth ₹14,000 crore
- Road projects worth ₹13,500 crore awarded under PPP mode in FY16

Projects status:

- **Railway projects in progress:** 68 projects-in-progress, 29 completed
- **Roads projects awarded**

Seven under build-operate-transfer (BOT): Length: 872 km, Cost: ₹11,934 crore

44 under engineering, procurement & construction (EPC): Length: 1,776 km, Cost: ₹27,235 crore

Defence

- Foreign investment up to 49% under the automatic route
- Approved new policy document in this regard which provides for increase in contract threshold from ₹300 crore to ₹2,000 crore for offsets, tweaking the L1 policy and pushing the Make in India initiative
- Defence ministry clears projects worth ₹25,000 crore
- German defence companies keen to invest in Make in India program

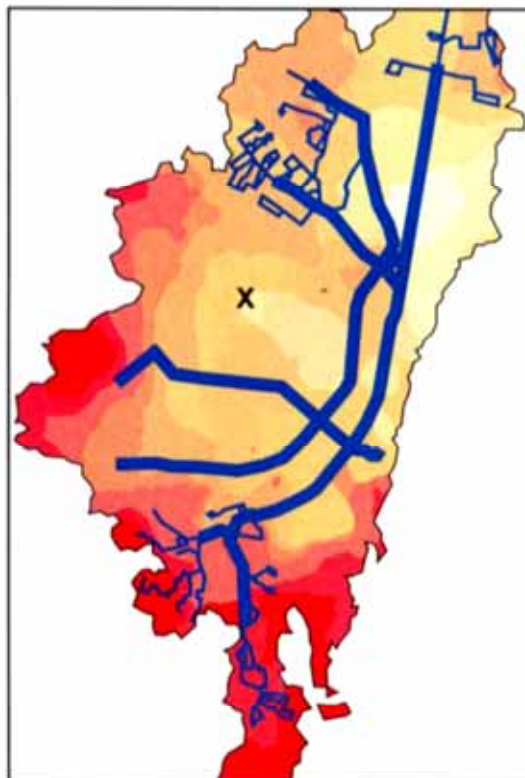
Skill Development

- Prime Minister unveils National Policy for Skill Development and Entrepreneurship 2015
- The government has set a target of training 40.2 crore people under the new National Policy for Skill Development by 2022

Source: Deloitte

Resource 12 for Question 4

The TransMilenio network



Key

— TransMilenio route

— feeder route

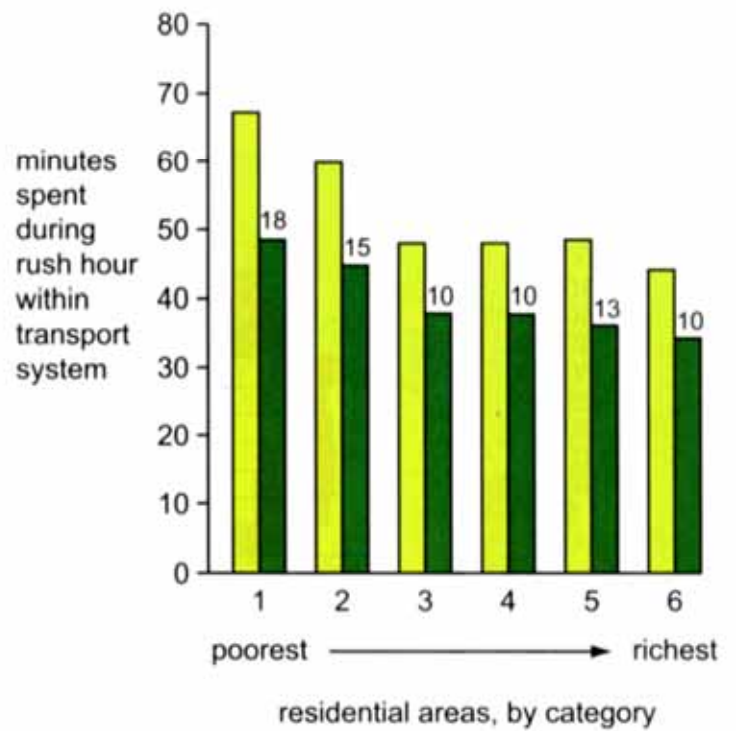
— city boundary

residential poverty

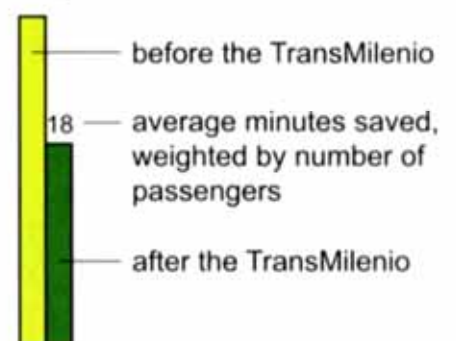


Resource 13 for Question 4

Effects on journey times



Key



Resource 14 for Question 4
Photograph of the BRT during morning rush hour



END OF PAPER