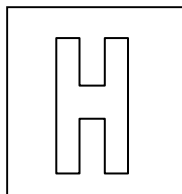


Candidate Name: \_\_\_\_\_

Class

Adm No

--	--



## **2017 Promotional Examination II**

### **Pre-University 2**

**GEOGRAPHY (HIGHER 2)**  
**Paper 2 Data Response Questions**

**9751/02**

**INSERT**

**12 September 2017**

**3 hours**

---

### **INSTRUCTIONS TO CANDIDATES**

This insert contains all the Resources referred to in the questions.

---

**This insert consists of 12 printed pages.**

**[Turn over**

## Resource 1 for Question 1

## State-led efforts to improve liveability in Kallang, Singapore

**KALLANG**

Near the city centre, Kallang is well served by commercial and community facilities. The area will be further rejuvenated with quality housing, including new waterfront developments. The enhancement of green spaces and waterbodies will provide fresh leisure options for residents, while exciting new facilities like the Sports Hub will add vibrancy to the area.



To make Singapore a great city to live, work and play



**Sports Hub**



**Rochor Canal**



**Pek Kio Community Hospital**



**Keong Wai Shiu Hospital**



**Asperia Shopping Mall**



**Jalan Besar Conservation Area**



**Condominium Development**

For more information and photo credits, visit the Draft Master Plan 2013 exhibition website at [www.ura.gov.sg/MS/DMP2013](http://www.ura.gov.sg/MS/DMP2013).

## Resource 2 for Question 1

## State-led efforts to improve liveability in Punggol, Singapore

**PUNGGOL**

Punggol has transformed into a residential eco-town, providing a high-quality living environment amidst a dense green and blue network. As the town continues to develop, residents can look forward to new retail amenities, more community and recreation facilities, enhanced transport connectivity, as well as more job opportunities close to home.



To make Singapore a great city to live, work and play



Northshore District



Maltida District



Waterfront Living



Punggol Point Park



Waterway Kayaking



Punggol Promenade

For more information and photo credits, visit the Draft Master Plan 2013 exhibition website at [www.ura.gov.sg/MS/DMP2013](http://www.ura.gov.sg/MS/DMP2013).

## Resource 3 for Question 1

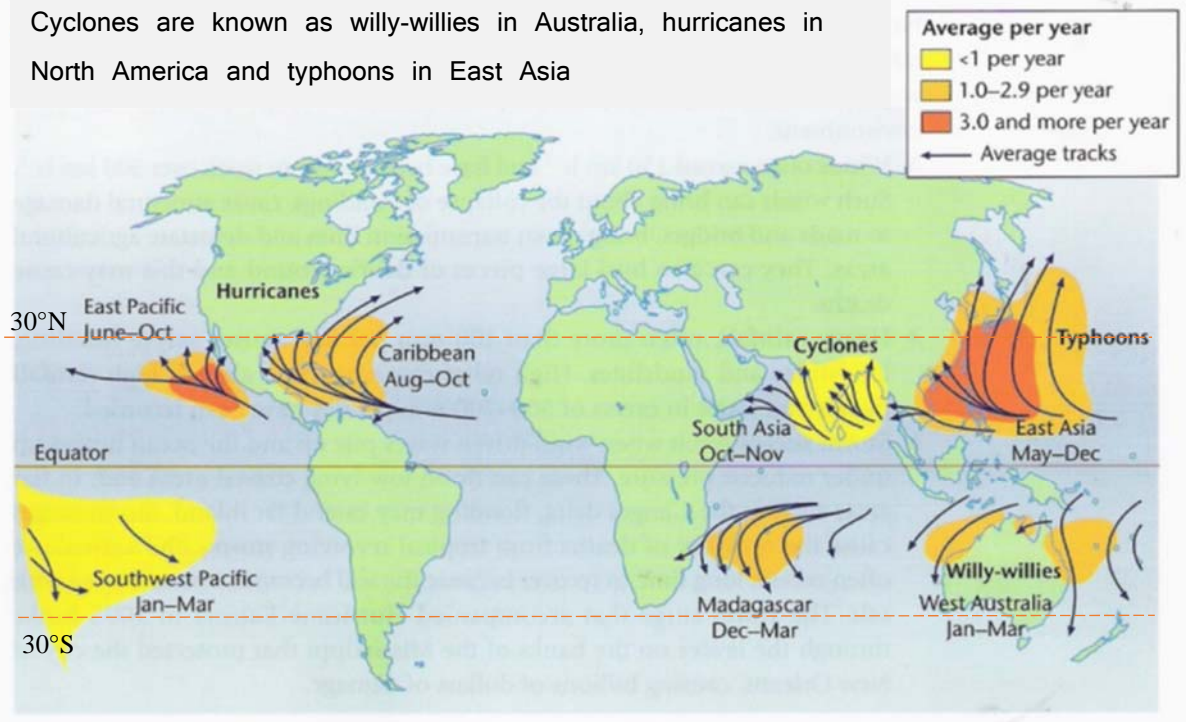
Survey questionnaire results collected from the neighbourhood of Kallang, Singapore

<b>Total Population of Kallang: 101, 210</b> <b>Sample Size: 100</b> <b>Sampling Method: Random Sampling</b>		
	<b>Yes (%)</b>	<b>No (%)</b>
<b>General</b>		
Do you know about recent state-led changes in the neighbourhood?	23	77
Are you satisfied with the current liveability of your neighbourhood?	44	56
<b>Leisure</b>		
Are you happy with the current quality of retail facilities in your neighbourhood?	83	17
Are you happy with the current quality of sports facilities in your neighbourhood?	55	45
<b>Environment</b>		
Are you happy with the current quality of green spaces in your neighbourhood?	37	63

## Resource 4 for Question 2

## Global distribution of tropical cyclones

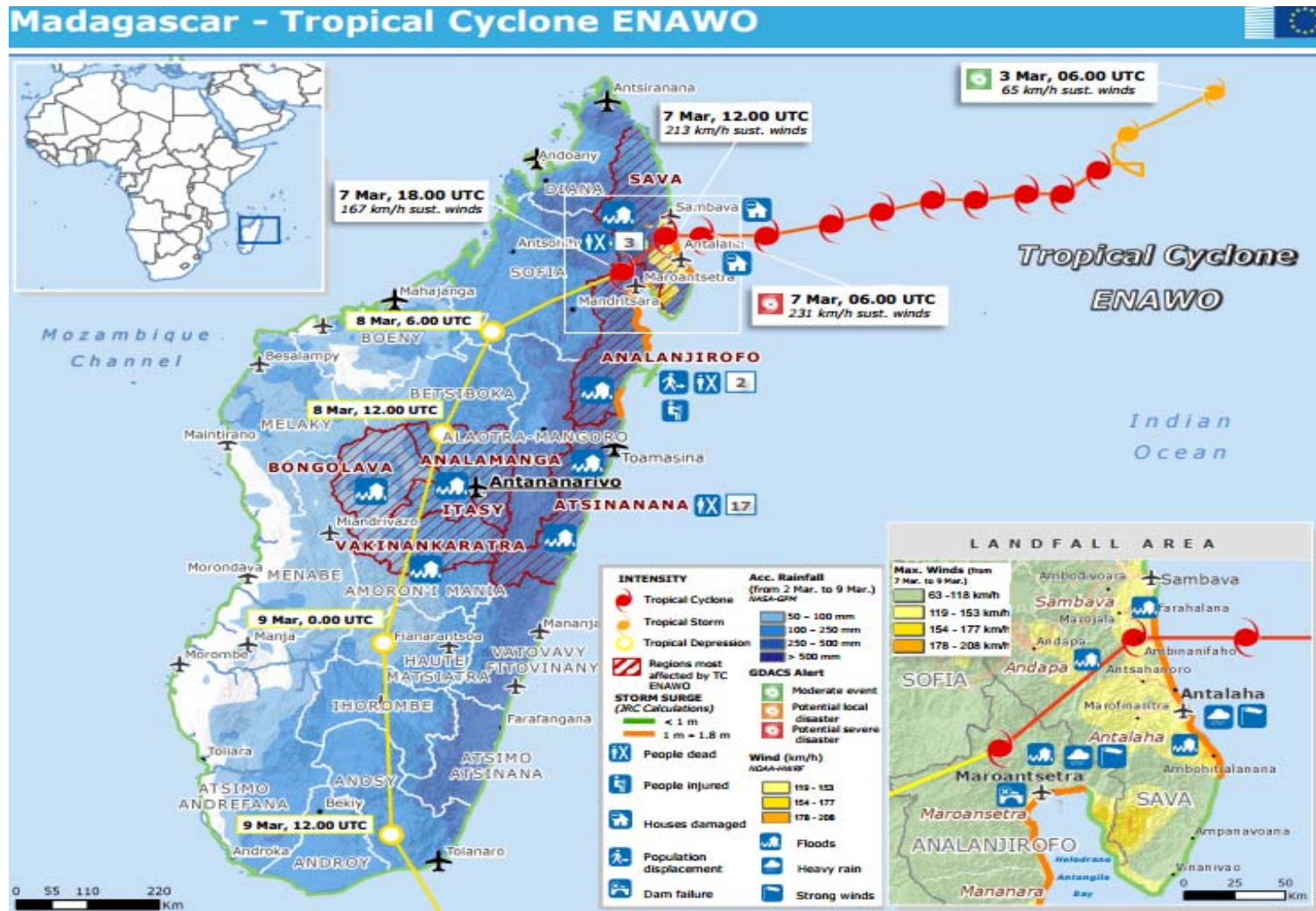
Cyclones are known as willy-willies in Australia, hurricanes in North America and typhoons in East Asia





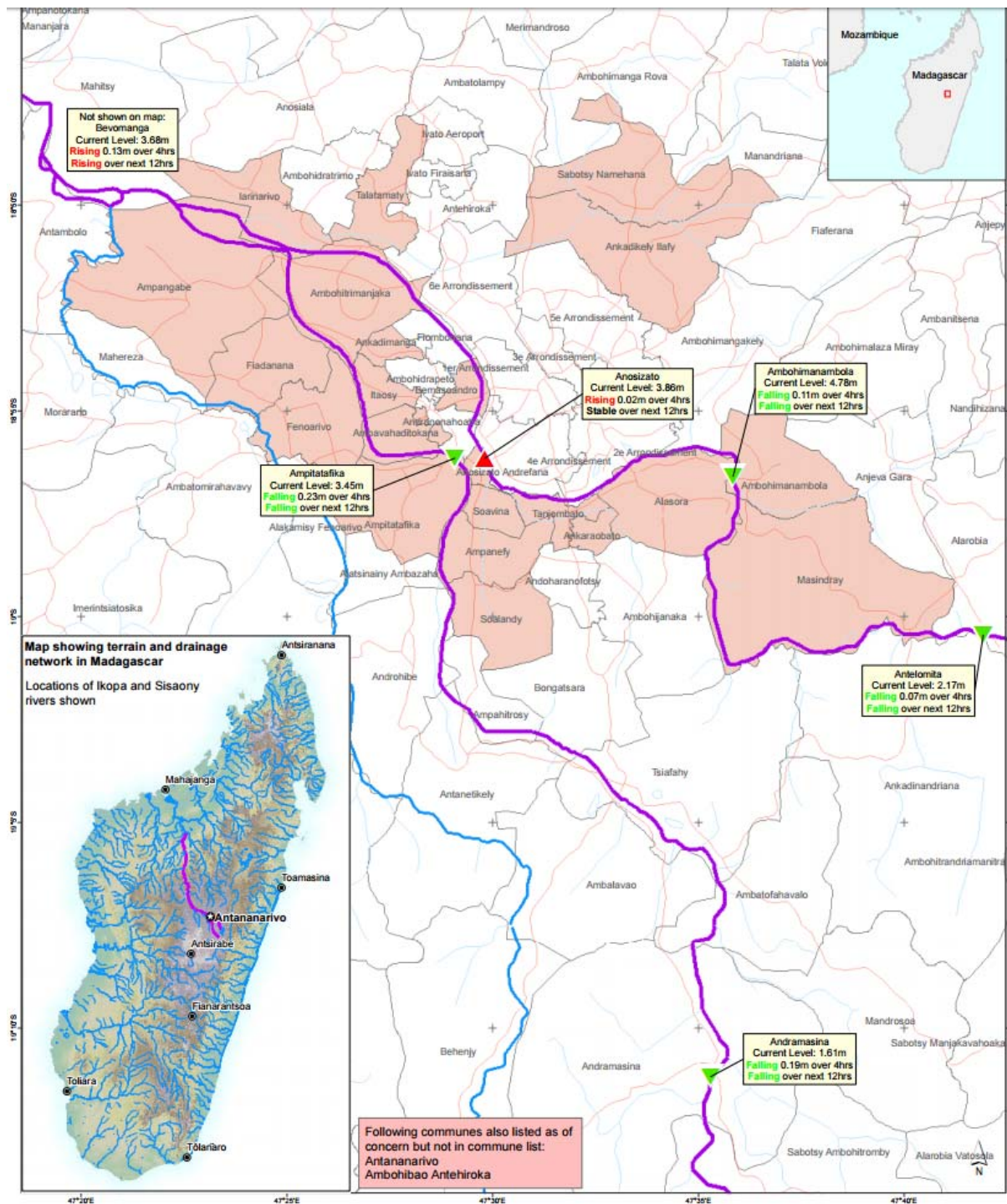
## Resource 5 for Question 2

## Tropical Cyclone Enawo in Madagascar



## Resource 6 for Question 2

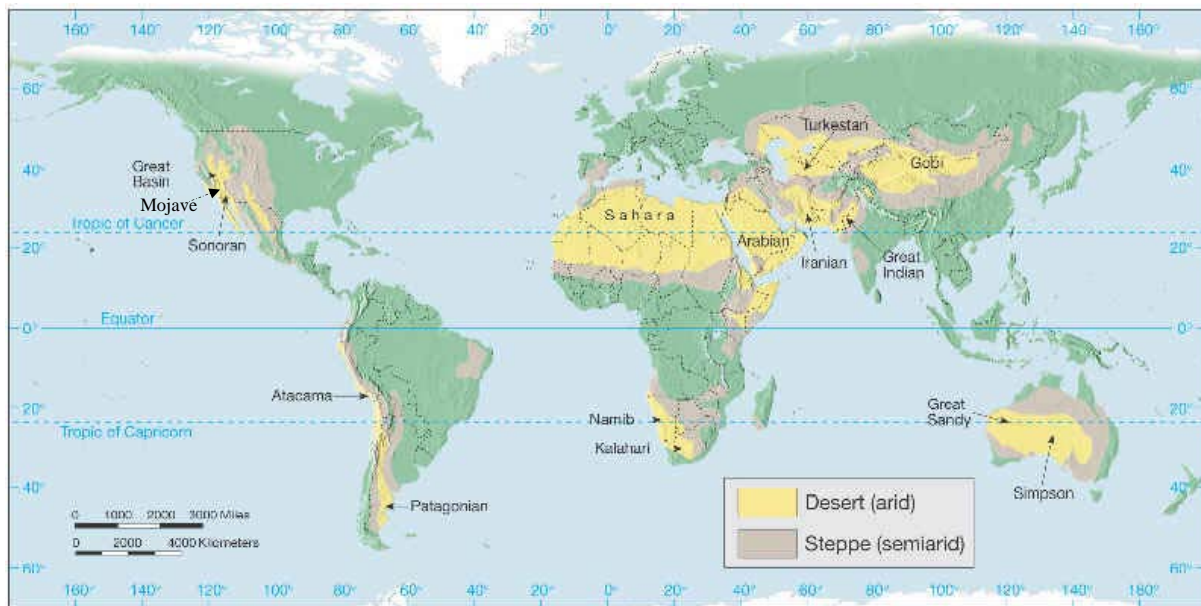
### Flooding situation in Antananarivo, Madagascar on 10 March 2017 as a result of Tropical Cyclone Enowa





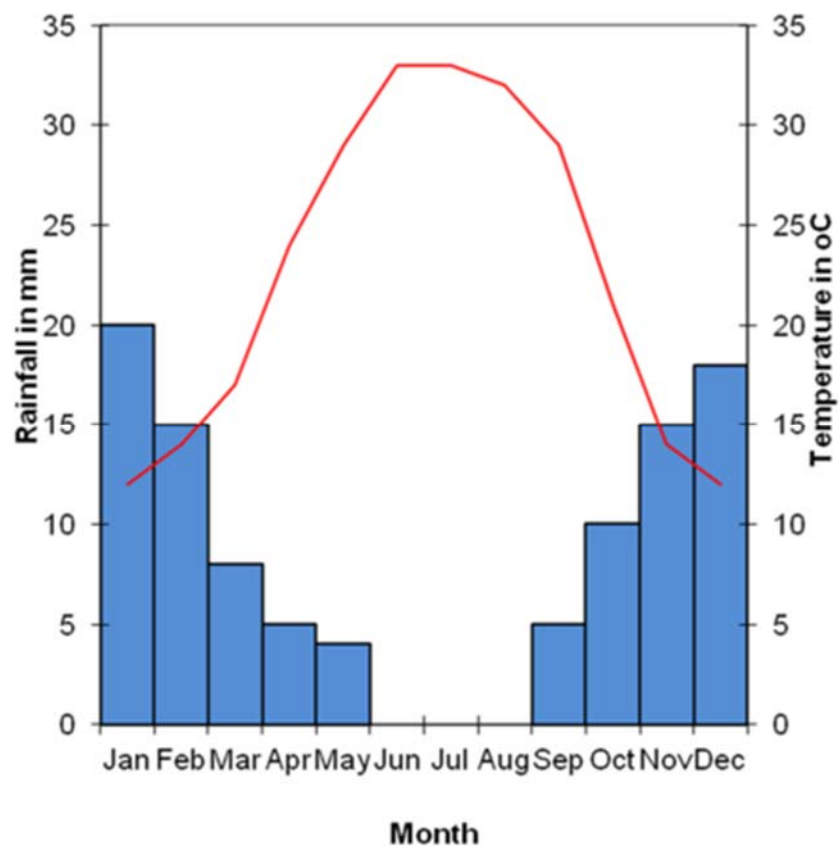
## Resource 7 for Question 3

## Global Distribution of Arid Tropical Climates



## Resource 8 for Question 3

## Climograph of Mojave Desert





**Resource 9 for Question 3****A landform found in Mojave Desert****Resource 10 for Question 3****Newspaper excerpt on a mudslide in Mojave Desert**

## Hundreds of vehicles stuck in mudslide on Hwy 58 in Mojave desert

**POSTED:** OCT 16 2015 01:21PM EDT

**UPDATED:** OCT 16 2015 08:28PM EDT

Hundreds of cars and trucks were still stuck in mud Friday from flash floods on State Route 58 in the Mojave Desert north of Los Angeles.

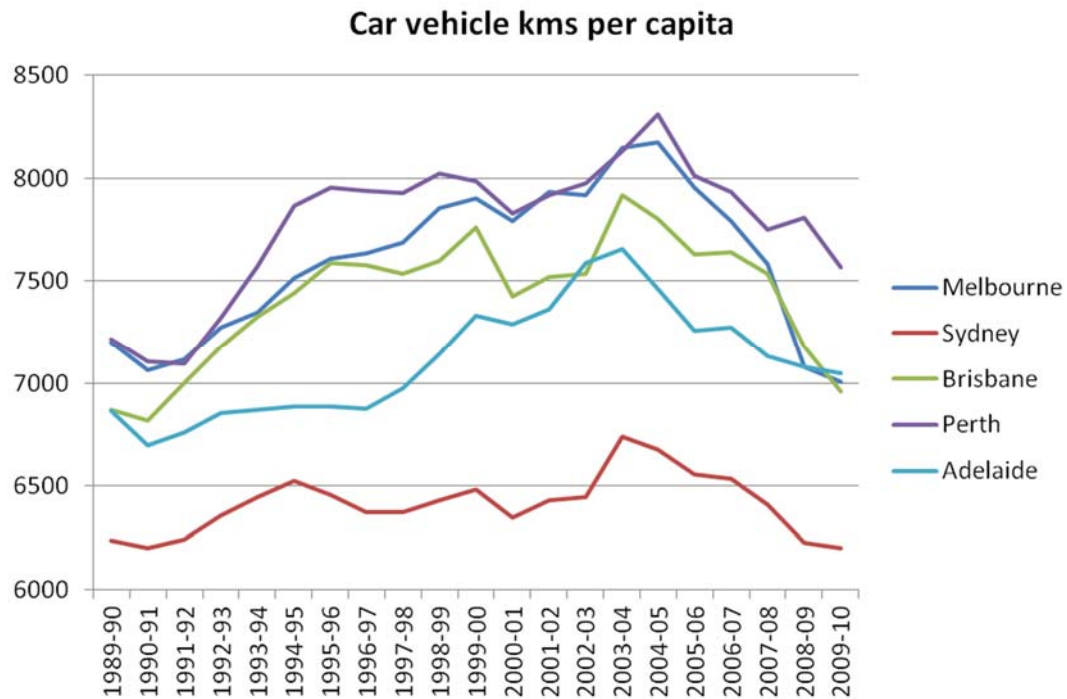
It's one of several scenes of massive mud flows unleashed by powerful thunderstorms in Southern California's mountains and deserts Thursday afternoon.

It happened fast as a downpour just before 6pm Thursday night soaked the hillsides. Officials at a news conference in Lancaster Friday said we should all remember the power of Mother Nature can be extraordinary. A little water can move a big car. In this case, a little moved a big number of cars and trucks.

CHP officials say it could take days to clean off the road and remove the vehicles. Given that, it could take longer to get the road reopened. So, for now, Highway 58 between Mojave and Tahachapie is closed indefinitely.

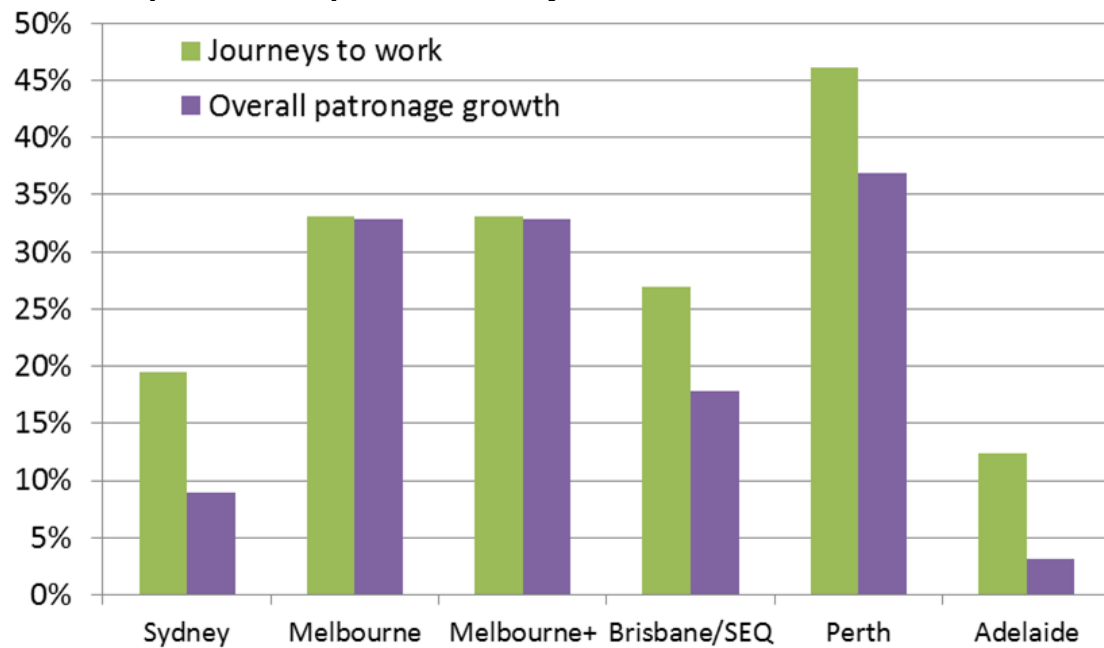
## Resource 11 for Question 4

**Distance travelled by car vehicles in kilometres (kms) per capita in major cities of Australia from 1989 to 2010**



## Resource 12 for Question 4

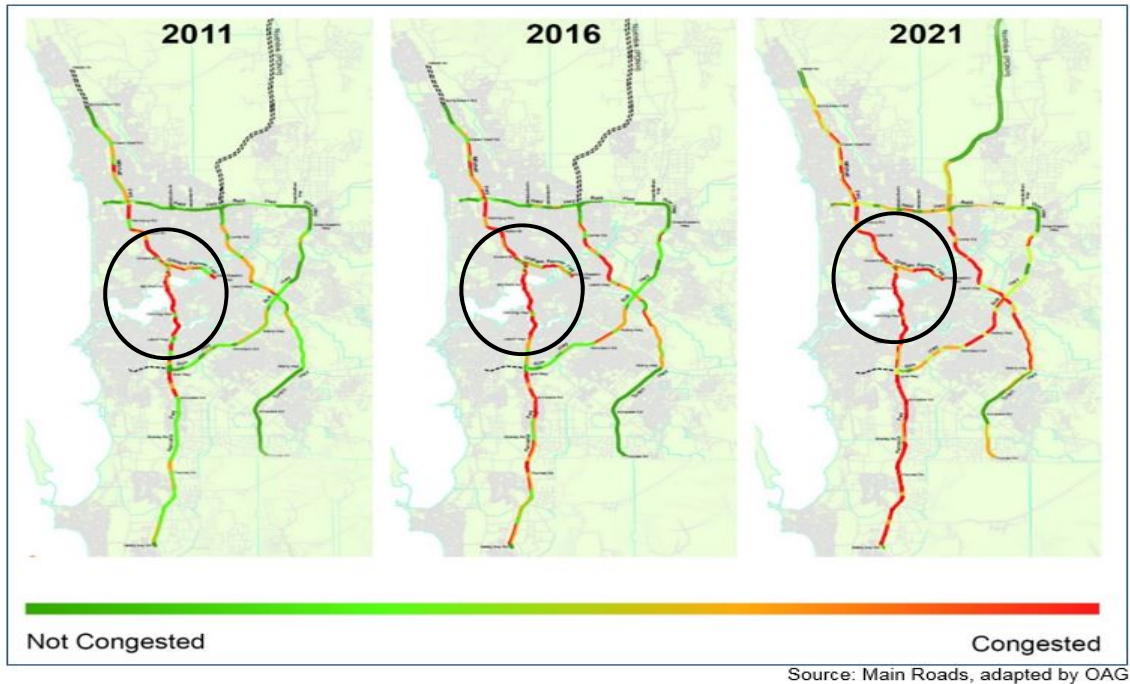
**Growth in public transport use in major cities of Australia from 2006 to 2011**



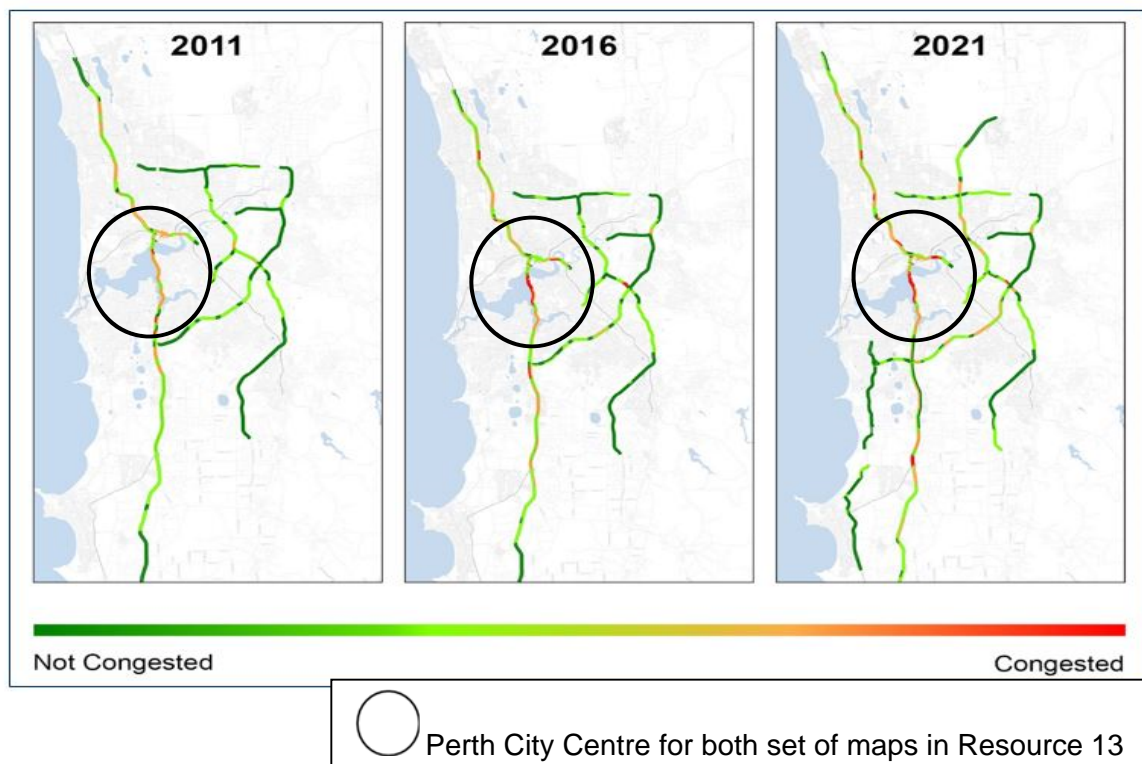
## Resource 13 for Question 4

Computer modelling results of estimated future traffic congestion situation by the Office of Auditor General (OAG) of Western Australia (WA), focusing on the main roads in and around Perth, Australia in the year 2015.

**Before factoring in public transport use and current projects**



**After factoring in public transport use and current projects**



## Resource 14 for Question 4

## Infographic about the perceived and actual average cost of owning a car in Perth.



-End of Insert-

## Copyright Acknowledgements:

Question 1 Resource 1 & 2	<a href="http://www.fendylee.com/master-plan-2013/archives/11-2013/3">http://www.fendylee.com/master-plan-2013/archives/11-2013/3</a> (Last accessed: 21 August 2013)
Question 1 Resource 3	Millennia Institute
Question 2 Resource 4	<a href="http://www.geocoops.com/tropical-storms.html">http://www.geocoops.com/tropical-storms.html</a>
Question 2 Resource 5	<a href="http://www.gdacs.org/dataset/dailyreport/TC/1000341/20170310_Madagascar_TC_ENAWO.pdf">http://www.gdacs.org/dataset/dailyreport/TC/1000341/20170310_Madagascar_TC_ENAWO.pdf</a> (Last accessed: 10 August 2017)
Question 2 Resource 6	<a href="https://maps.mapaction.org/dataset/5338c40f-3446-4aaf-abb9-07eb7ec3edbb/resource/8e9478ba-7958-43df-a259-5e006f2d8cad/download/ma003antananarivofloods10032017-300dpi.pdf">https://maps.mapaction.org/dataset/5338c40f-3446-4aaf-abb9-07eb7ec3edbb/resource/8e9478ba-7958-43df-a259-5e006f2d8cad/download/ma003antananarivofloods10032017-300dpi.pdf</a> (Last accessed: 10 August 2017)
Question 3 Resource 7	<a href="http://www.geo.hunter.cuny.edu/tbw/wc.notes/15.climates.veg/climate/B/arid.seimarid.climates.world.map.jpg">http://www.geo.hunter.cuny.edu/tbw/wc.notes/15.climates.veg/climate/B/arid.seimarid.climates.world.map.jpg</a> (Last accessed: 11 August 2017)
Question 3 Resource 8	<a href="http://7continents1globe.com/mojave-desert/">http://7continents1globe.com/mojave-desert/</a> (Last accessed: 11 August 2017)
Question 3 Resource 9	<a href="https://www.flickr.com/photos/sieren/5609982041">https://www.flickr.com/photos/sieren/5609982041</a> (Last accessed: 11 August 2017)
Question 3 Resource 10	<a href="http://www.fox5ny.com/news/34017262-story">http://www.fox5ny.com/news/34017262-story</a> (Last accessed: 11 August 2017)
Question 4 Resource 11	<a href="https://chartingtransport.files.wordpress.com/2011/10/car-vkms-per-capita.png">https://chartingtransport.files.wordpress.com/2011/10/car-vkms-per-capita.png</a> (Last accessed: 14 August 2017)
Question 4 Resource 12	<a href="https://chartingtransport.files.wordpress.com/2013/02/jtw-versus-overall-pt-growth-v2.png">https://chartingtransport.files.wordpress.com/2013/02/jtw-versus-overall-pt-growth-v2.png</a> (Last accessed: 14 August 2017)
Question 4 Resource 13	<a href="https://audit.wa.gov.au/reports-and-publications/reports/main-roads-projects-address-traffic-congestion/demand-road-network-increased-traffic-congestion-predicted-get-worse/">https://audit.wa.gov.au/reports-and-publications/reports/main-roads-projects-address-traffic-congestion/demand-road-network-increased-traffic-congestion-predicted-get-worse/</a> (Last accessed: 14 August 2017)
Question 4 Resource 14	<a href="https://greengurus.com.au/car-sharing-is-coming-to-perth/">https://greengurus.com.au/car-sharing-is-coming-to-perth/</a> (Last accessed: 14 August 2017)