



TEMASEK JUNIOR COLLEGE  
JC2 PRELIMINARY EXAMINATIONS (Advanced Level)

**ART**

**9750/01**

**Higher 2**

Paper 1: Study of Visual Arts

**15 September 2017**  
**0800 - 1100 HRS**  
**3 hours**

Additional Materials: Answer Paper  
Picture Insert

**Instructions to candidates:**

Write your full name, CG and question numbers on all the work you hand in.

Write only in dark blue or black pen but you may use a soft pencil for any drawings or diagrams.

Do not use staples, paper clips, highlighters, glue, or correction fluid.

Answer **three** questions:

All parts (a-c) of **one** question from Section A

All parts (a-c) of **one** question from Section B

**One** question from Section C

At the end of the examination, fasten all your work securely together with the string provided.

**30** marks per section X **3** sections = total of **90** marks

This **question paper** consists of **4** printed pages, including the cover page.

[Turn over]

### Section A: Structured Questions

Answer all three parts (a-c) of **one** question

1. ***The Reckless Sleeper*** by Rene Magritte, 1926 [Fig. 1]

Oil Paint on Canvas

Support: 1160 x 810 x 20 mm, frame: 1380 x 1027 x 100 mm

Tate Gallery, London

- (a) Evaluate the ideas and subject matter in this painting [10]
- (b) Analyse the use of brushwork, colour and composition in this work. [10]
- (c) Compare this work with another work by Chua Mia Tee, and explain why naturalism is selected as a means of expression for the artists. [10]

**Total [30]**

2. ***The Massacre at Chios (Diptych)*** by Yue Min Jun, 1994 [Fig. 2]

Oil on Canvas

250 x 364 cm

Private Collection

- (a) Assess the subject matter and composition of this work. [10]
- (b) Analyse the ideas and intentions in this work. [10]
- (c) Discuss the influences that are evident in this work. [10]

**Total [30]**

## Section B: Structured Comparison Questions

Answer all three parts (a-c) of **one** question.

3. **Several Circles** by Vasily Kandinsky, 1926 [Fig. 3a]

Oil on canvas

140.3 x 140.7 cm

Solomon R. Guggenheim Museum, New York, Solomon R. Guggenheim

Founding Collection, By gift

**Untitled (Pink with Circles)** by Fiona Rae, 1996 [Fig. 3b]

Oil, pencil and charcoal on canvas

213.4 x 198.1 cm

Fiona Rae Collection

- a) Describe the formal qualities of the two paintings. [10]
- b) Compare the painting techniques and compositions of the two works. [10]
- c) In your opinion, which work is more effective in the use of abstraction to convey ideas? [10]

4. **TV Garden** by Nam June Paik, 1974 [Fig. 4a (i – ii)]

Video installation with color television sets and live plants

Dimensions vary

Solomon R. Guggenheim Museum, New York

**Corps Étranger** by Mona Hatoum, 1994 [Fig. 4b (i –ii)]

video installation, with cylindrical wooden structure, video projector, amplifier, four speakers,

350 x 300 x 350 cm

Centre Georges Pompidou, Paris

- a) Discuss the subject matter in these works. [10]
- b) Analyse the artists' techniques and approaches in both works. [10]
- c) Compare the use of time and space in both works. [10]

**Total [30]**

### Section C: Compulsory Essay Question

Answer **one** question

5. In your opinion, how did the paintings of 'The Singapore Pioneers' explore influences of both Western and Eastern Art?

Analyse the work of **two** artists in your answer.

6. Discuss and analyse how Singapore Modern Artists influence the culture and development of art in Singapore. Refer to the works of **at least two** Singapore Modern Artists in your discussion.

**Total [30]**

**End of Paper**



TEMASEK JUNIOR COLLEGE  
JC2 PRELIMINARY EXAMINATIONS (Advanced Level)

**ART**

**9750/01**

**Higher 2**

Paper 1: Study of Visual Arts

**15 September 2017**  
**0800 - 1100 HRS**  
**3 hours**

Picture Insert

**This insert contains illustrations for the questions.**

**Fig. 1 refers to Question 1.**

**Fig. 2 refers to Question 2.**

**Fig. 3a & 3b refer to Question 3.**

**Fig. 4a (i- ii) & 4b (i - ii) refer to Question 4**

This **insert** consists of 7 printed pages, including the cover page.

[Turn over]

## Section A

**Figure 1**

***The Reckless Sleeper*** by Rene Magritte, 1926

Oil Paint on Canvas

Support: 1160 x 810 x 20 mm, frame: 1380 x 1027 x 100 mm

Tate Gallery, London



**Figure 2**

***The Massacre at Chios (Diptych)*** by Yue Min Jun, 1994

Oil on Canvas

250 x 364 cm

Private Collection



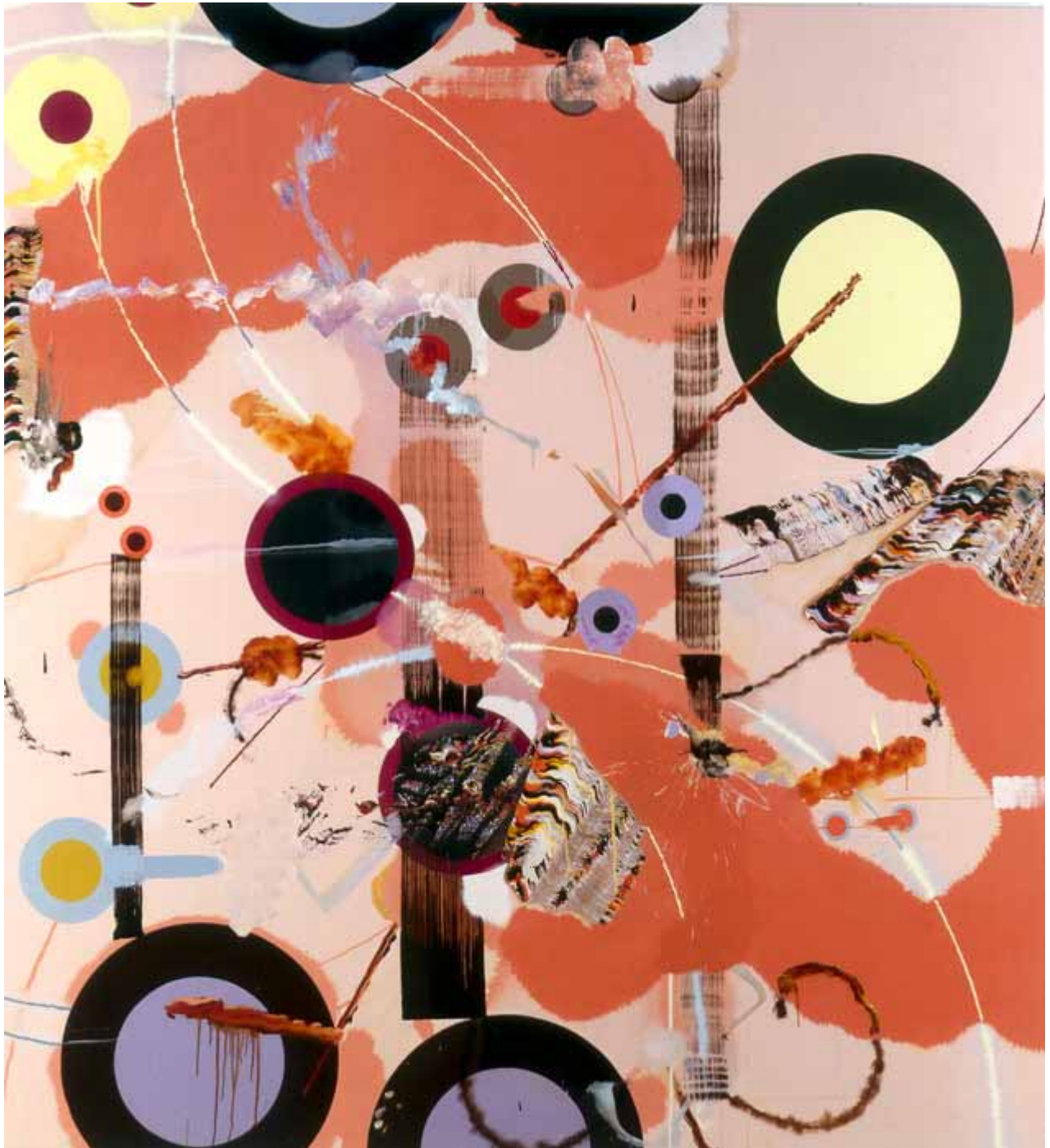


**Figure 3a**  
***Several Circles*** by Vasily Kandinsky, 1926  
Oil on canvas  
140.3 x 140.7 cm  
Solomon R. Guggenheim Museum, New York,  
Solomon R. Guggenheim Founding Collection, By gift





**Figure 3b**  
***Untitled (Pink with Circles)*** by Fiona Rae, 1996  
Oil, pencil and charcoal on canvas  
213.4 x 198.1 cm  
Fiona Rae Collection



**Figure 4a (i)**

***TV Garden*** by Nam June Paik, 1974

Video installation with color television sets and live plants

Dimensions vary

Solomon R. Guggenheim Museum, New York



**Figure 4a (ii)**

***TV Garden*** (close-up) by Nam June Paik, 1974





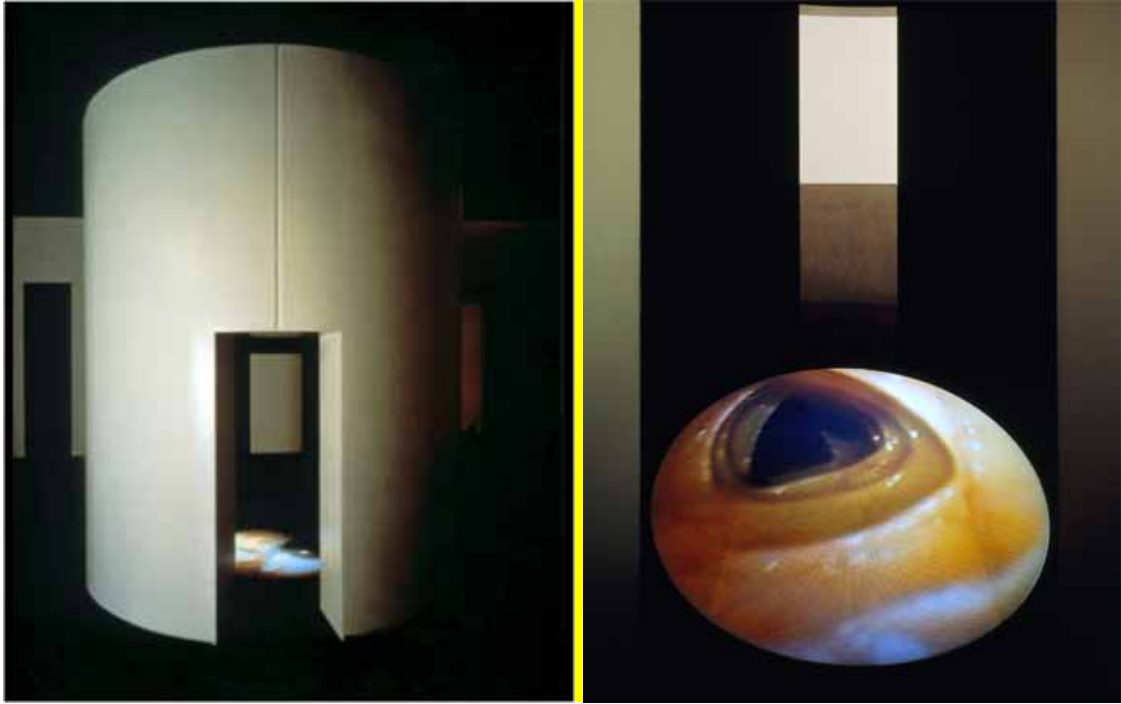
**Figure 4b (i)**

***Corps Étranger*** by Mona Hatoum, 1994

Video installation, with cylindrical wooden structure, video projector, amplifier,  
four speakers

350 x 300 x 350 cm

Centre Georges Pompidou, Paris



**Figure 4b (ii)**

***Corps Étranger*** (video projection) by Mona Hatoum, 1994



**End of paper**