

RIVER VALLEY HIGH SCHOOL
General Certificate of Education Advanced Level
Preliminary Examination II
Higher 2

GEOGRAPHY
Paper 2 Human Geography

9730/02
19 September 2016
3 hours

Additional Materials: Answer Paper
 1 Insert
 World outline map
 Cover Page

READ THESE INSTRUCTIONS FIRST

Write your name, admission number and class on all the work you hand in.
Write in dark blue or black pen on both sides of the paper.
You may use an HB pencil for any diagrams, graphs, or rough working.
Do not use staples, paper clips, glue or correction fluid.

Section A

- Answer **all** questions.

Section B

- Answer **two** questions, each from a different topic.

The Insert contains all the Figures and Table referred to in the questions.
You should make reference to appropriate examples studied in the field or the classroom, even where such examples are not specifically required by the question.
Diagrams and sketch maps should be drawn whenever they serve to illustrate an answer.
The world outline map may be annotated and handed in with relevant answers.
You are reminded of the need for good English and clear presentation in your answers.

At the end of the examination, fasten all your work below the cover page securely together.
The number of marks is given in brackets [] at the end of each question or part question.

This document consists of 5 printed pages, 1 blank page and 1 Insert.



[Turn over

Section A

Answer **all** the questions in this section.

Questions 1, 2 and 3 carry 12 marks and Question 4 carries 14 marks.

You should allocate your time accordingly.

The Globalisation of Economic Activity

- 1** Fig. 1A shows how selected countries rank in the 2016 Social Progress Index (SPI), and their respective levels of economic development (GDP per capita). Fig. 1B outlines the development indicators that the SPI takes into account.
- (a) With reference to Fig. 1A, describe the relationship shown between social progress and economic development. [4]
- (b) With support from Fig. 1B, suggest reasons for the patterns observed in (a). [4]
- (c) Evaluate the usefulness and relevance of development indicators for charting the progress of a country. [4]

Population Issues and Challenges

- 2** Fig. 2A shows a comparison of the outbreak areas of the Ebola virus in West Africa in 2014, from 1976 to 2013. Fig. 2B shows the spread of the 2014 Ebola outbreak on a global scale. Fig. 2C shows a public advisory infographic issued by ASEAN in response to the 2014 outbreak.
- (a) With reference to Figs. 2A and 2B, describe the development of the scale of the Ebola virus outbreak from 1976 to 2014. [3]
- (b) Suggest reasons for the global spread of the Ebola virus, citing information from Figs. 2A, 2B and 2C for support. [4]
- (c) Evaluate the importance of public education as a strategy to control the spread of epidemics. [5]

Urban Issues and Challenges

- 3** Table 1 shows the different types of occupations taken up in Vancouver from 1996 to 2006. Figs. 3A and 3B show the average household income in Vancouver, Canada in 1970 and 2005 respectively.
- (a)** Using Table 1, state the type of occupation which has:
 - i. the largest increase in percentage from 1996 to 2006; [1]
 - ii. the largest decrease in percentage from 1996 to 2006. [1]
 - (b)** With reference to Figs. 3A and 3B, describe the changes in the average household income in Vancouver from 1970 to 2005. [4]
 - (c)** Suggest **three reasons** for the socio-economic disparity seen in Vancouver. [6]

Population Issues and Challenges and The Globalisation of Economic Activity

- 4** Fig. 4A shows the distribution of refugees and migrants arriving in Europe in 2015. Fig. 4B shows asylum claims made in the final destination European countries of refugees and migrants in 2015. An asylum claim is an application for international protection.
- (a)** With reference to Figs. 4A and 4B, describe the distribution of refugees and migrants in Europe. [4]
 - (b)** Discuss the possible economic impacts of migration on the European countries. [4]
 - (c)** Evaluate the socio-economic impacts of a trading bloc you have studied on its member states. [6]

Section B

Answer **two** questions, each from a different topic. All questions carry 25 marks.

The Globalisation of Economic Activity

5 EITHER

- (a) Describe the characteristics of globalisation and explain the processes that have led to the globalisation of economic activity. [9]
- (b) 'The integration of a nation-state into the global economy is important for its national economic growth.' Discuss the validity of this statement. [16]

5 OR

- (a) Describe the way the service industry has changed as a response to globalisation. [9]
- (b) 'The global shift of economic activities has provided both opportunities and threats to NIEs.' Discuss this statement with reference to examples. [16]

Population Issues and Challenges

6 EITHER

- (a) Discuss the applicability of the Demographic Transition Model to describing demographic change in LDCs in the 21st Century. [9]
- (b) 'Coercion seldom results in lasting social change.' Discuss the validity of this statement in the light of anti-natal policies. [16]

6 OR

- (a) With the use of examples, explain how the socio-economic condition of a country determines its fertility rates. [9]
- (b) The key to sustainable development is the adoption of sound resource management strategies. How far do you agree? [16]

Urban Issues and Challenges

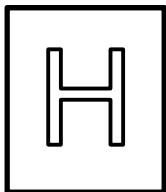
7 EITHER

- (a)** Outline the key ideas of the bid rent theory and explain how it can explain functional zoning in an urban area. [9]
- (b)** With reference to examples, discuss the extent to which the centrifugal and centripetal forces that shape the central city are state-driven. [16]

7 OR

- (a)** With the use of examples, compare the urbanisation trends found in DCs and LDCs today. [9]
- (b)** 'The liveability of a city hinges on the management strategies of its transport problems.' How far do you agree with this statement? [16]

BLANK PAGE



RIVER VALLEY HIGH SCHOOL
General Certificate of Education Advanced Level
Preliminary Examination II
Higher 2

GEOGRAPHY

9730/02

Paper 2 Human Geography

19 September 2016

INSERT

3 hours

READ THESE INSTRUCTIONS FIRST

This Insert contains all the Figures and Table referred to in the questions.

This document consists of 8 printed pages.



[Turn over

Fig. 1A for Question 1

Social Progress Index vs GDP per capita

Social Progress Index vs GDP per capita

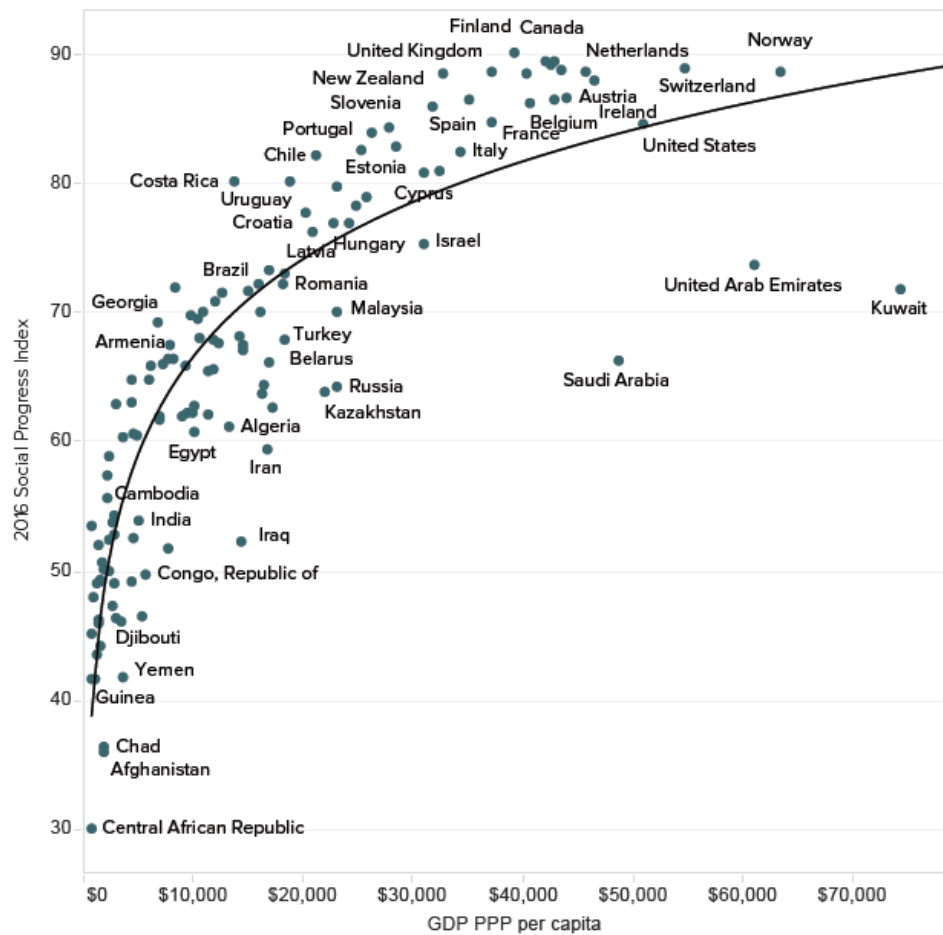


Fig. 1B for Question 1

Indicators measured to derive Social Progress Index

Social Progress Index

Basic Human Needs

Nutrition and Basic Medical Care
Water and Sanitation
Shelter
Personal Safety

Foundations of Wellbeing

Access to Basic Knowledge
Access to Information and Communications
Health and Wellness
Environmental Quality

Opportunity

Personal Rights
Personal Freedom and Choice
Tolerance and Inclusion
Access to Advanced Education

Fig. 2A for Question 2

Areas of Ebola Virus Outbreak in Africa from 1976 to 2014

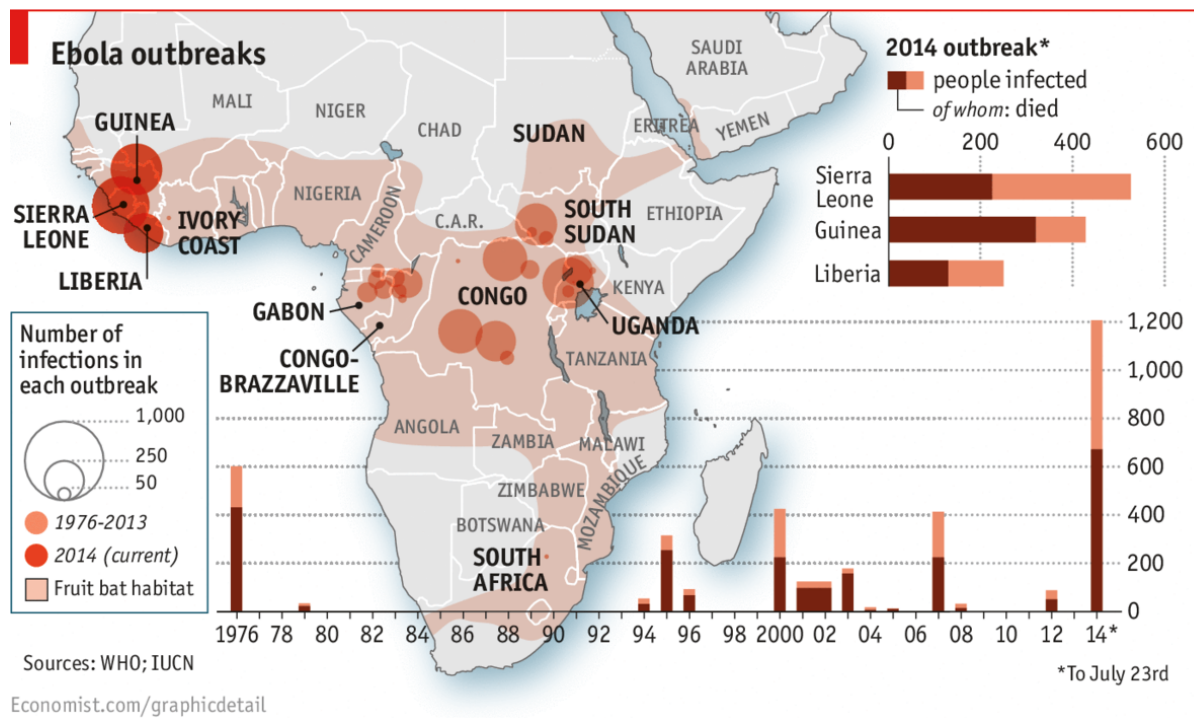


Fig. 2B for Question 2

Global Spread of Ebola Virus by 10 October, 2014

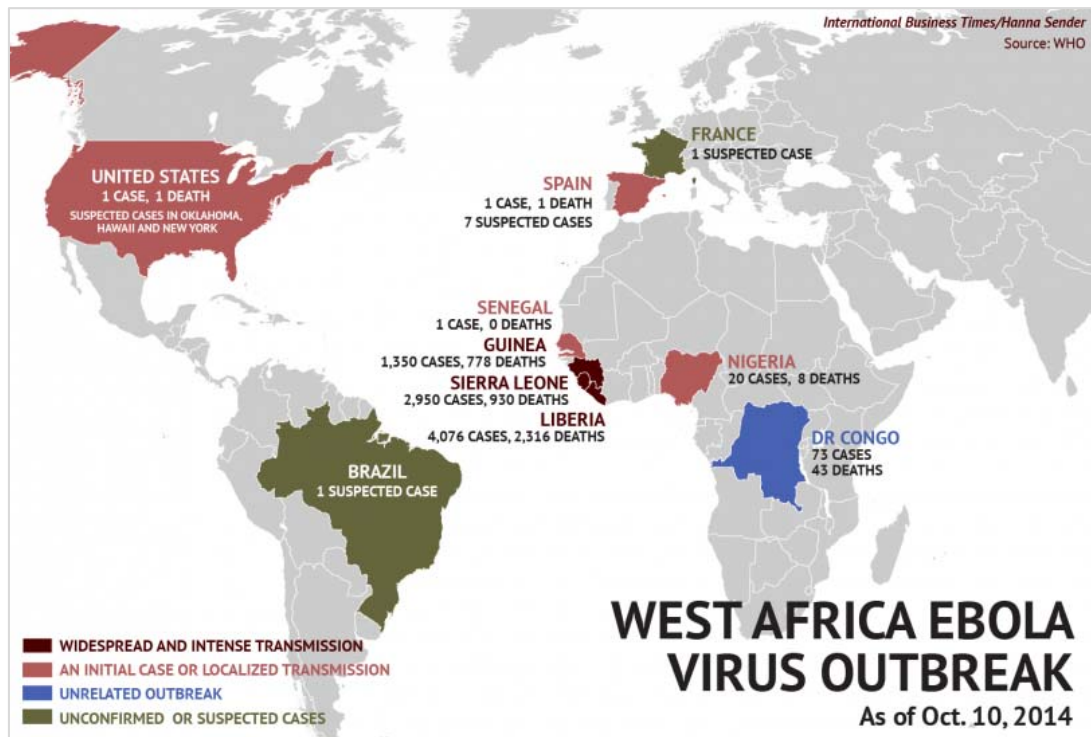


Fig. 2C for Question 2

Public Advisory Infographic on Ebola Issued by ASEAN

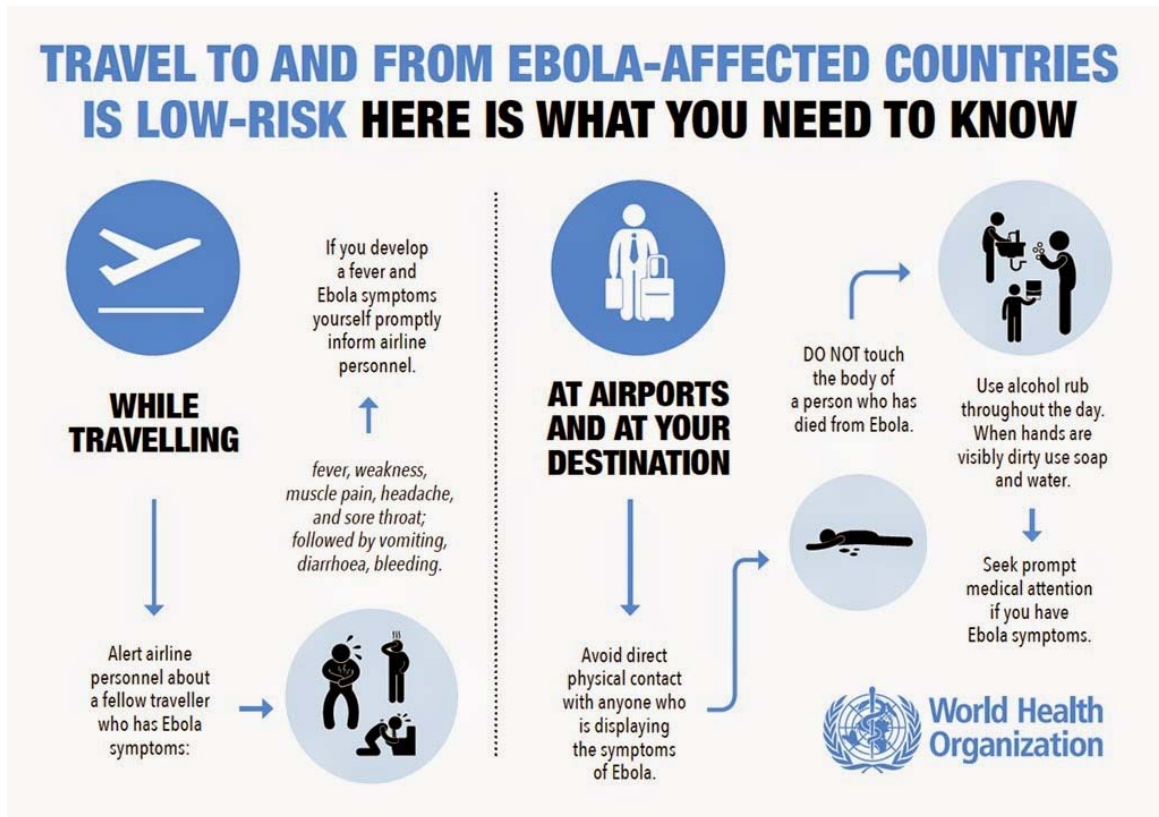


Table 1 for Question 3

Occupations taken up in Vancouver from 1996 to 2006

Population	1996	2001	2006
Management Occupations	10.7	11.9	11.3
Business, Finance, & Administration	21.1	19.8	19.1
Natural & Applied Sciences & Related Occupations	5.6	7.2	7.4
Health Occupations	4.8	5.2	5.4
Social Science, Education, & Government Services	6.9	7.4	7.8
Arts, Culture, Recreation & Sport	3.5	4.1	4.1
Sales & Service Occupations	27.5	25.9	26.1
Trades, Transport & Equipment Operators	13.1	12.1	12.6
Primary Industries	2.0	1.7	1.8
Processing, Manufacturing & Utilities	4.8	4.7	4.3
All Occupations	963,905	1,049,910	1,150,490

Fig. 3A for Question 3
Average household income in 1970, Vancouver, Canada

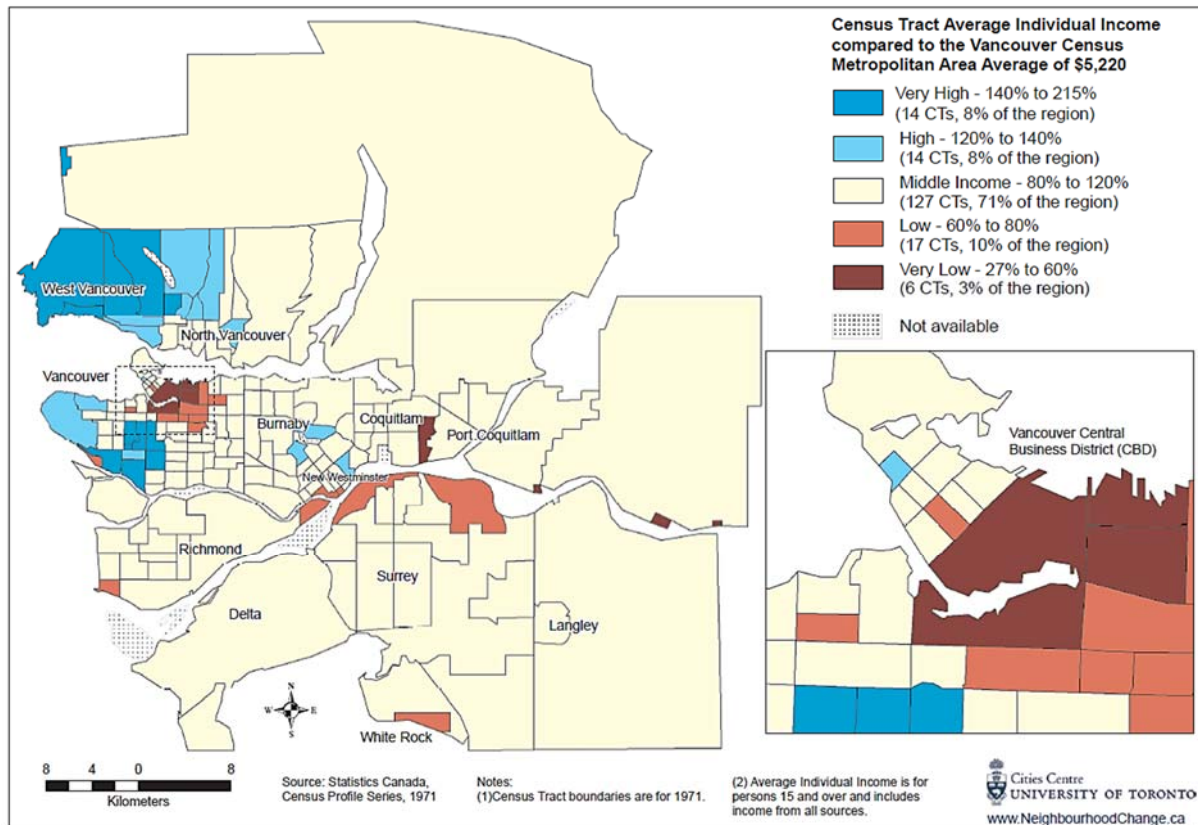


Fig. 3B for Question 3
Average household income in 2005, Vancouver, Canada

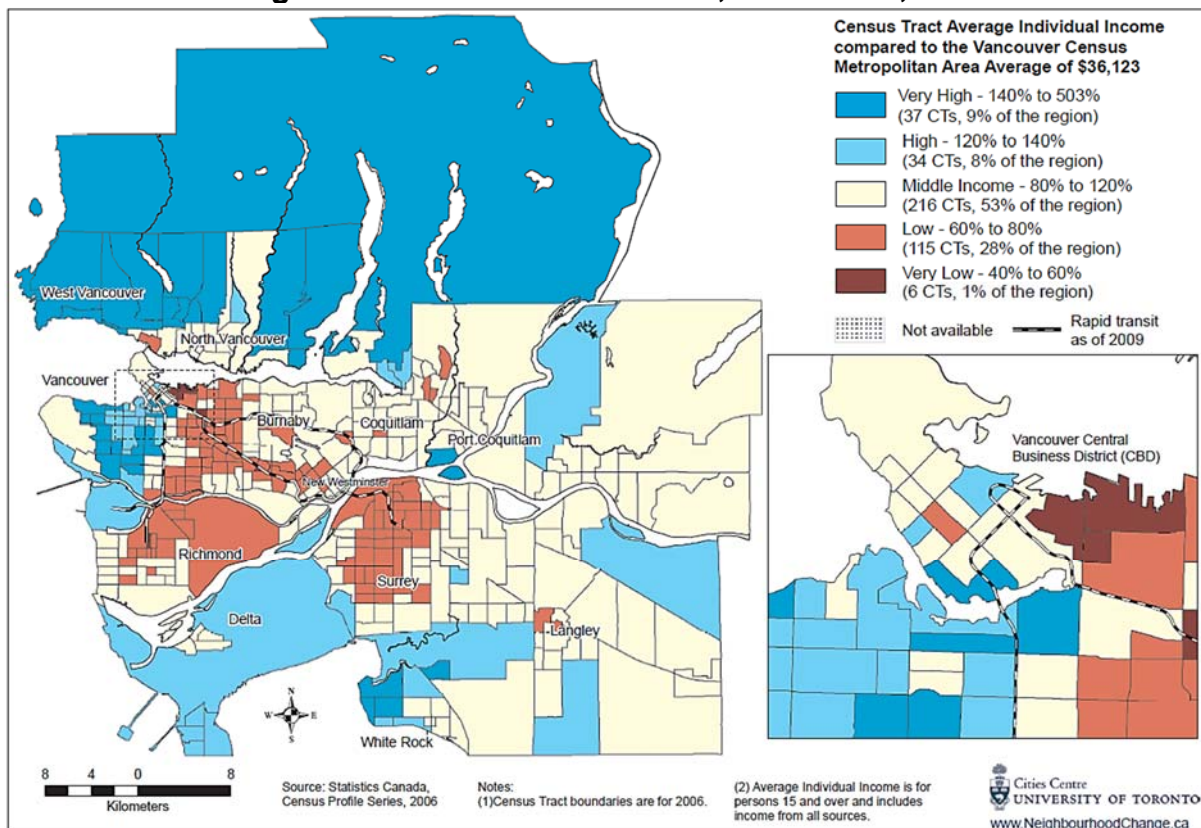


Fig. 4A for Question 4

Distribution of refugees and migrants arriving in Europe in 2015

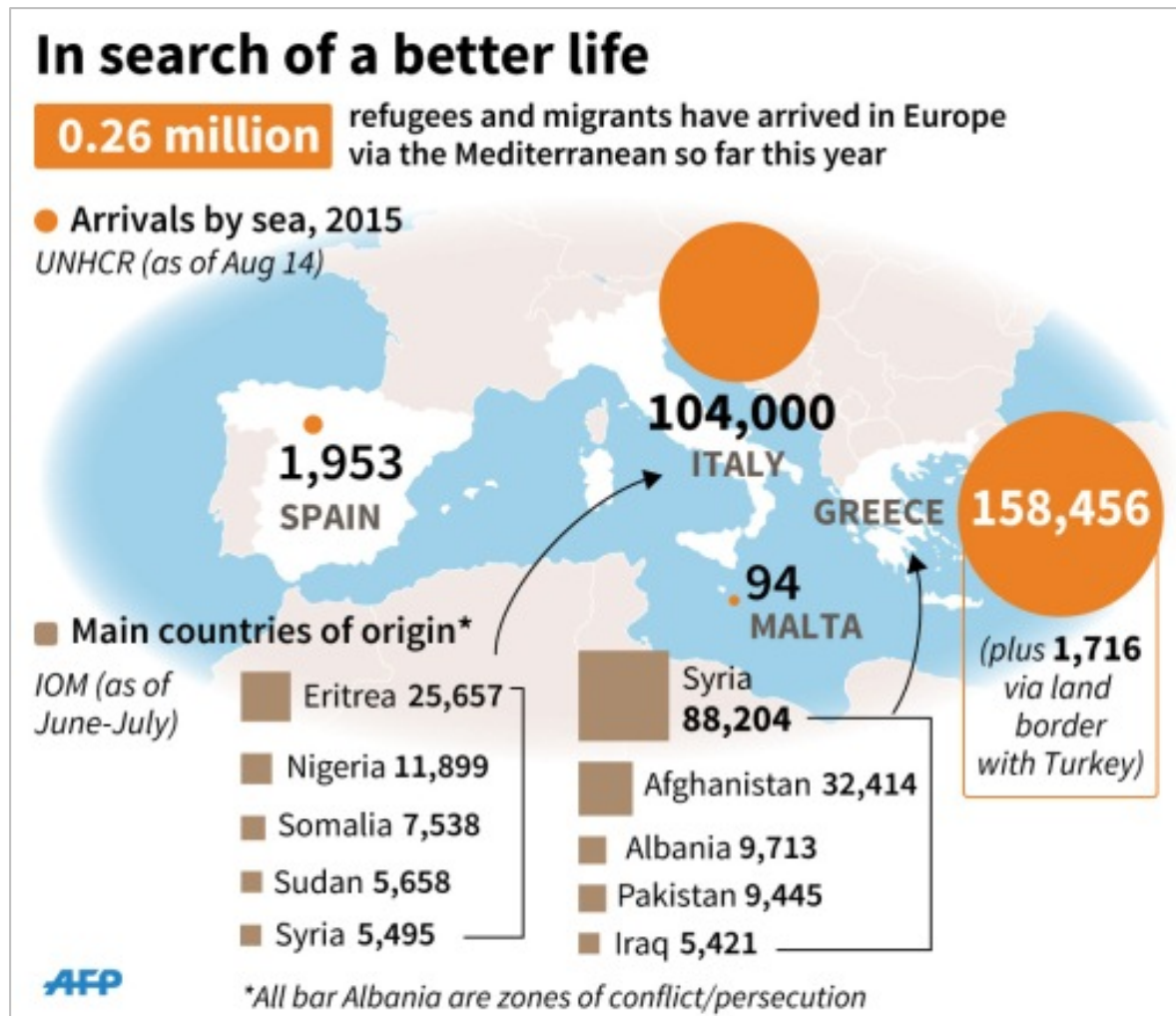


Fig. 4B for Question 4

Asylum claims in Europe, 2015

