



SERANGOON JUNIOR COLLEGE
JC2 PRELIMINARY EXAMINATIONS 2016
Higher 1

GEOGRAPHY

8812/01

INSERT

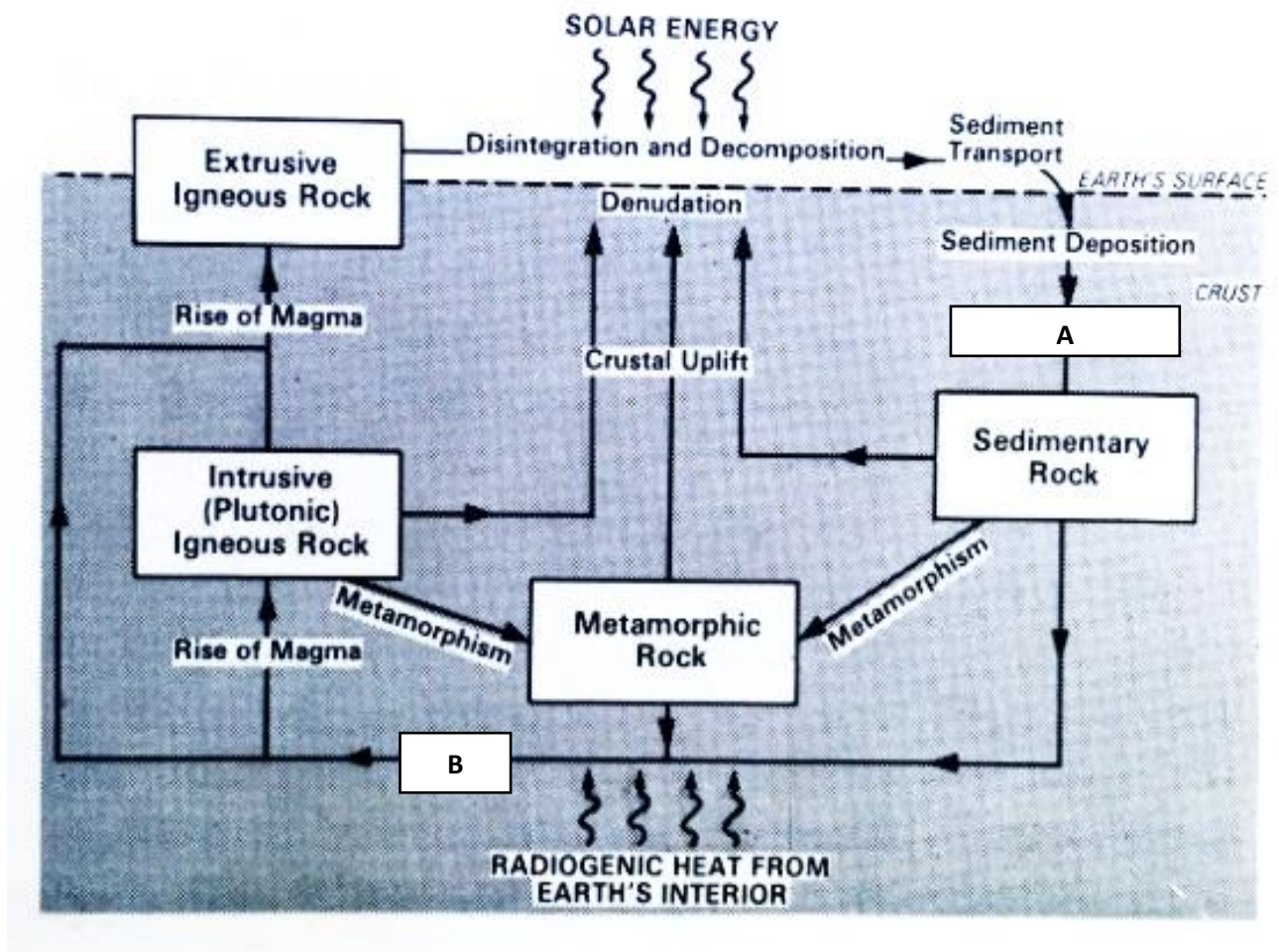
Thursday
15 Sep 2016
3 hours

READ THESE INSTRUCTIONS FIRST

This insert contains all the Figures referred to in the question paper.

Fig. 1 for Question 1

Fig. 1 Rock Cycle



Source: Processes and Pattern in Physical Geography (Keith Hilton)

Figs 2A, 2B and 2C for Question 2

Fig. 2A China's exports and imports (1995 -2014)

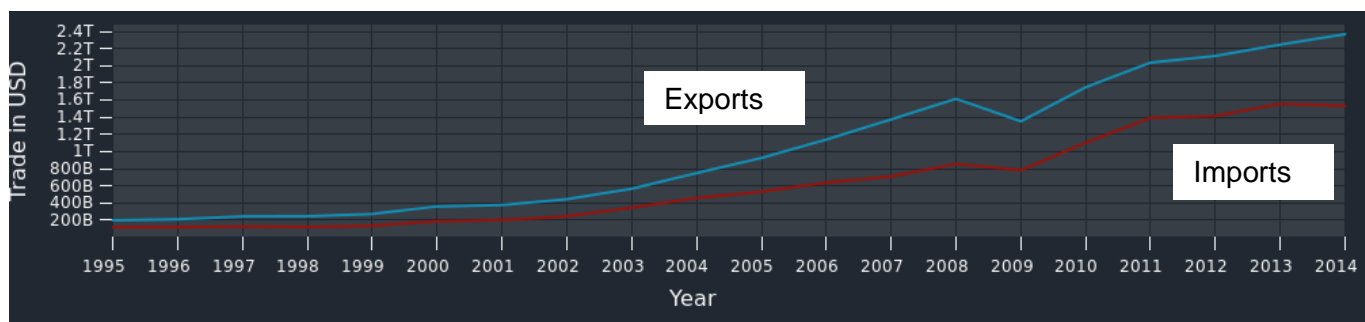


Fig. 2B China's Exports (2014)

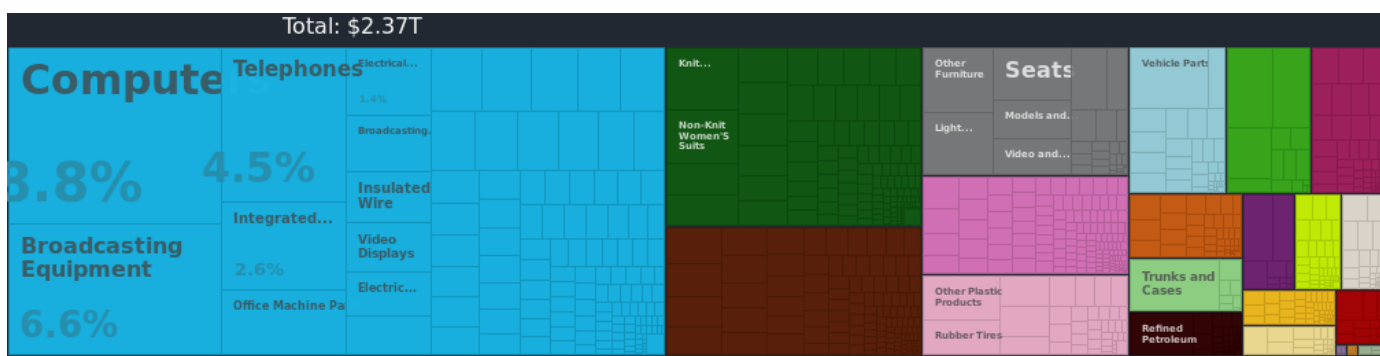
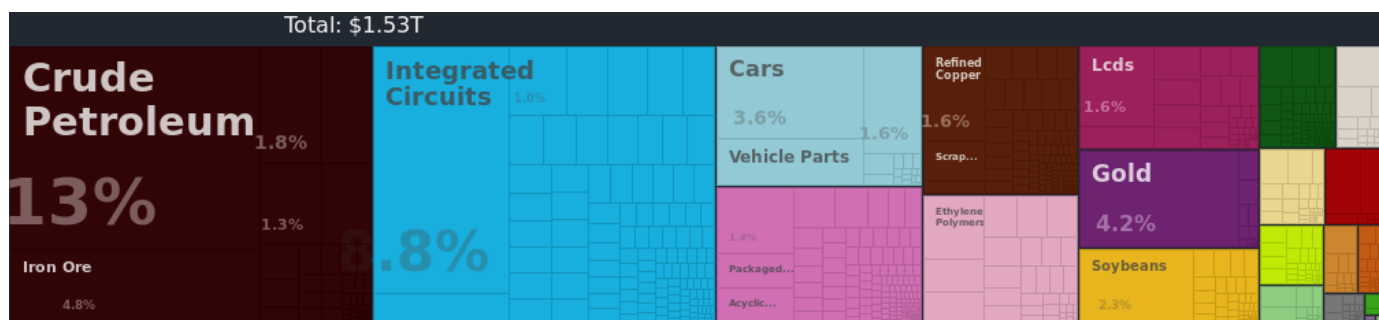


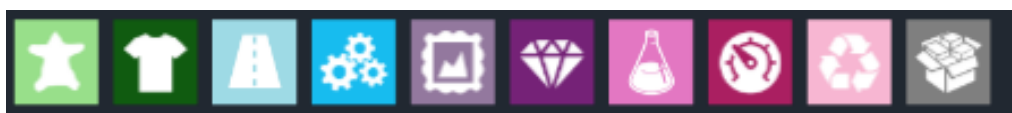
Fig. 2C China's Imports (2014)



Key:



Mineral Products Wood products Metals Stone & Glass Animal & Veg Bi-product Paper Goods Veg Goods Animal Products Food-stuff Weapon Footwear & Headwear



Animal Hides Textiles Transport Machines Arts and Antiques Precious Metals Chemical Products Instruments Plastics & Rubbers Miscellaneous

Fig. 3 for Question 3 Either

Fig. 3 Hjulstrom Diagram

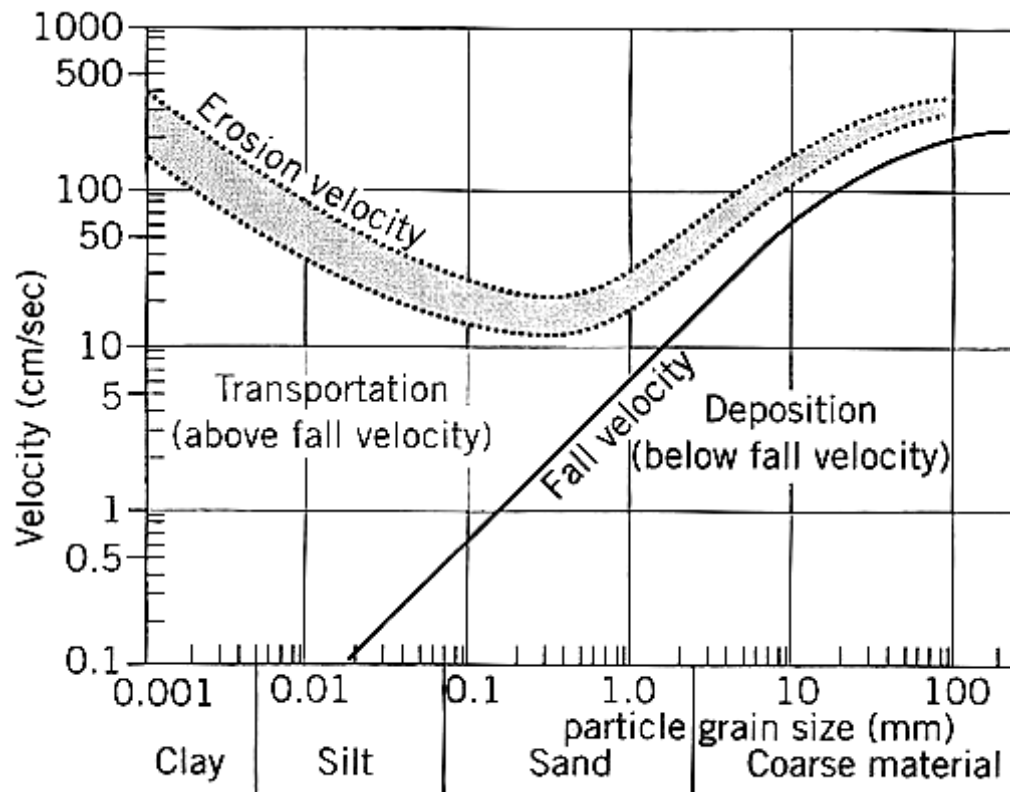
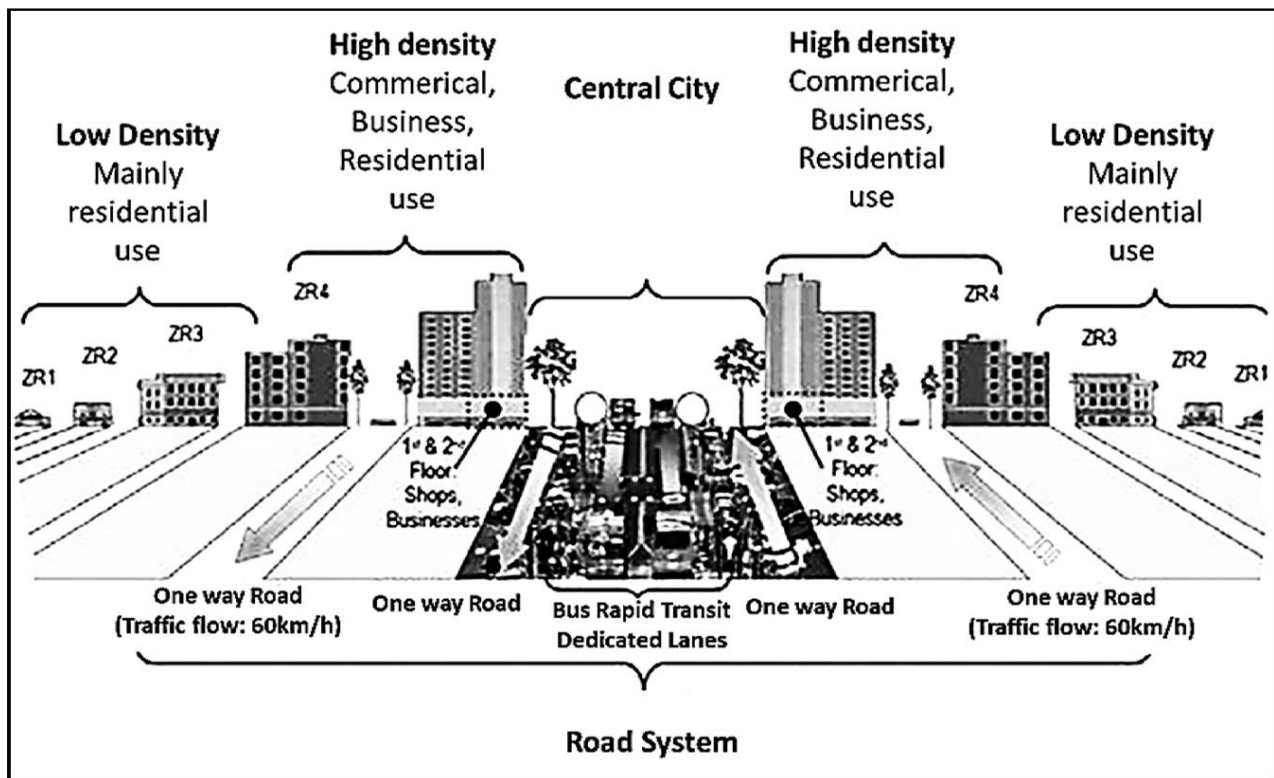


Fig. 4A and Photograph A for Question 3 Or

Fig. 4A Curitiba's Integrated Transit Network



Photograph A Street view of Curitiba's road system



Source: <https://dgunderblog.files.wordpress.com/2015/08/trinary-road-spine.jpg>

Figs 5A and 5B for Question 4 Either

Fig. 5A Tectonic plates and the epicentre of the 2011 Tohoku, Japan earthquake

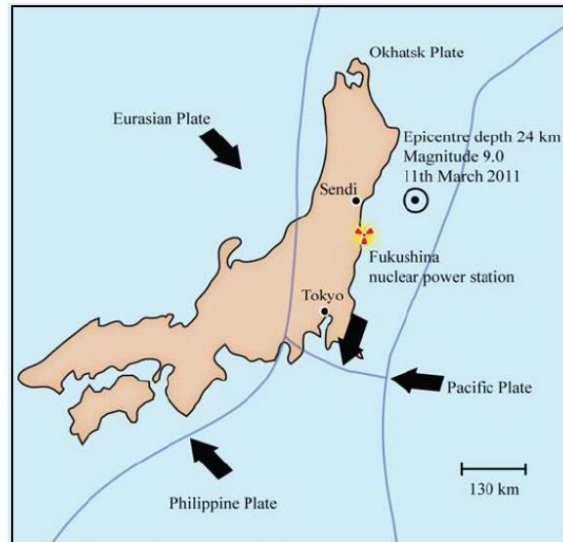
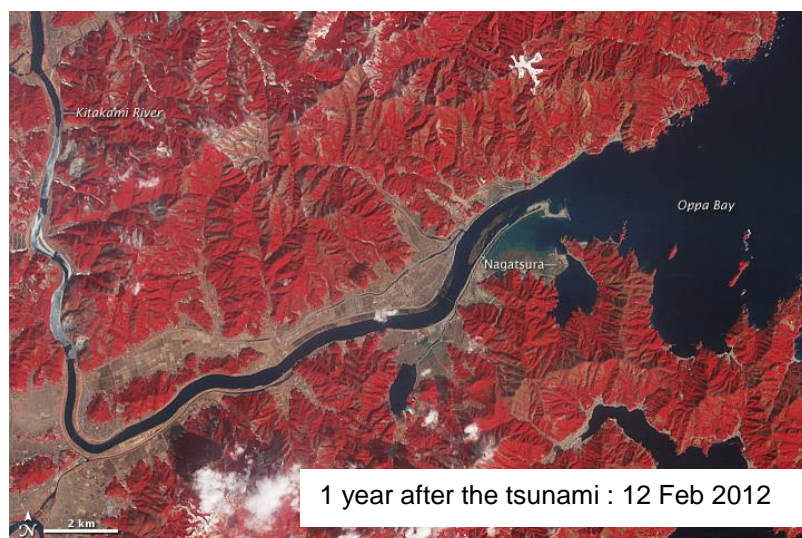
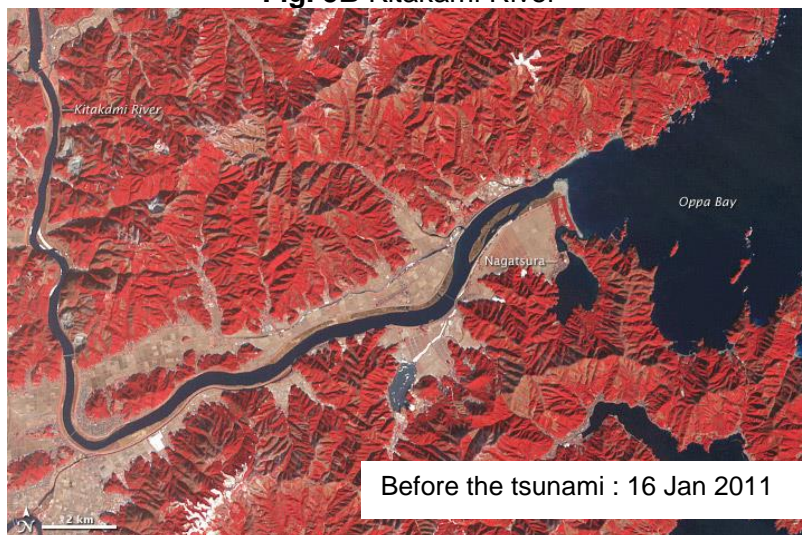


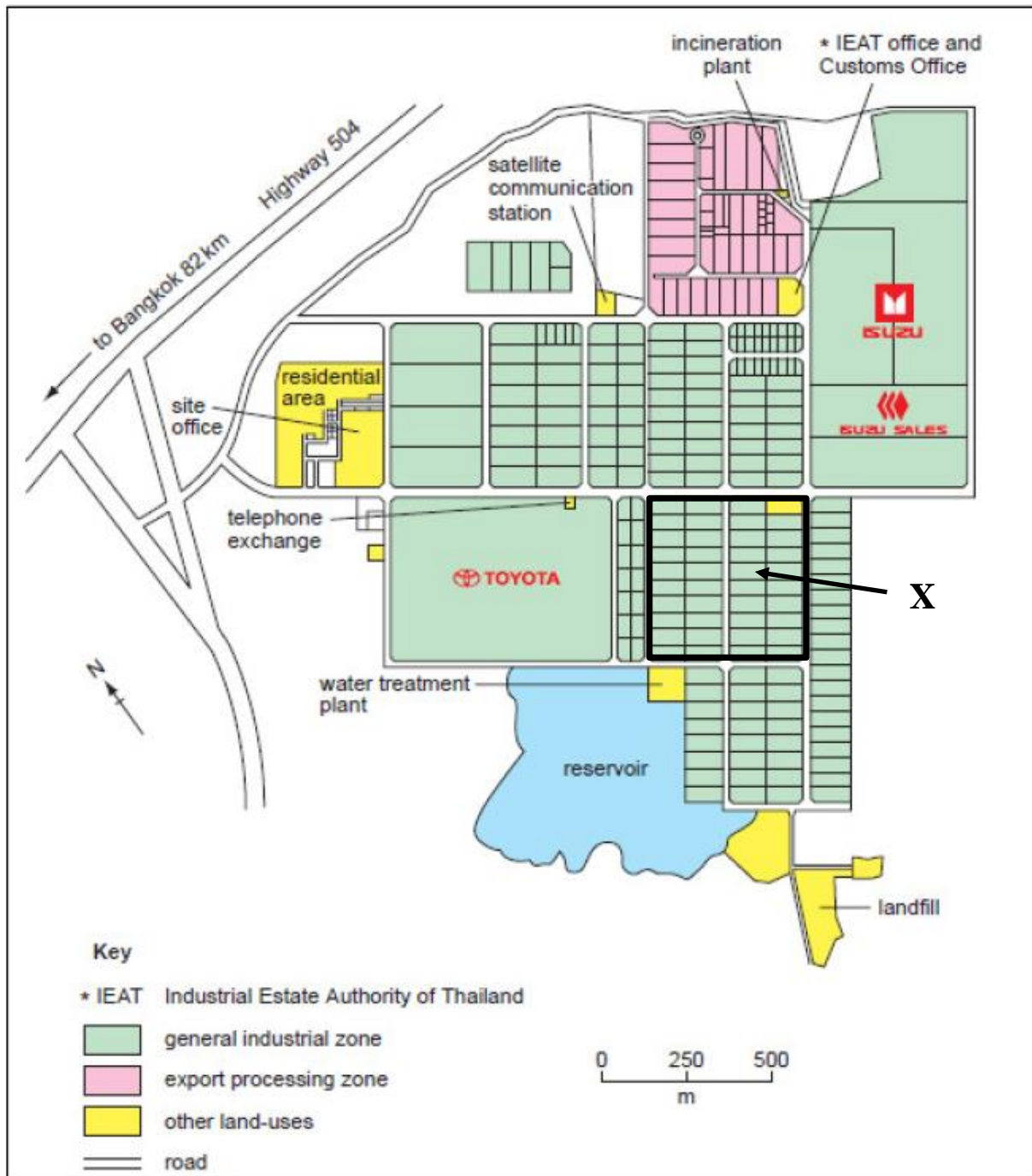
Fig. 5B Kitakami River



Source: <http://earthobservatory.nasa.gov/NaturalHazards/view.php?id=77379>

Fig. 6 for Question 4Or

Fig. 6 Plan of the Gateway City Industrial Estate in Thailand



End of Insert