



CATHOLIC JUNIOR COLLEGE
In preparation for
General Certificate of Education Advanced Level
Higher 2

GEOGRAPHY

Paper 2

9730/02

25 August 2015

3 hours

READ THESE INSTRUCTIONS FIRST

This Insert contains all the Figures and the Photograph referred to in the questions.

This document consists of 7 printed pages.

[Turn over]

Figure 1 for Question 1

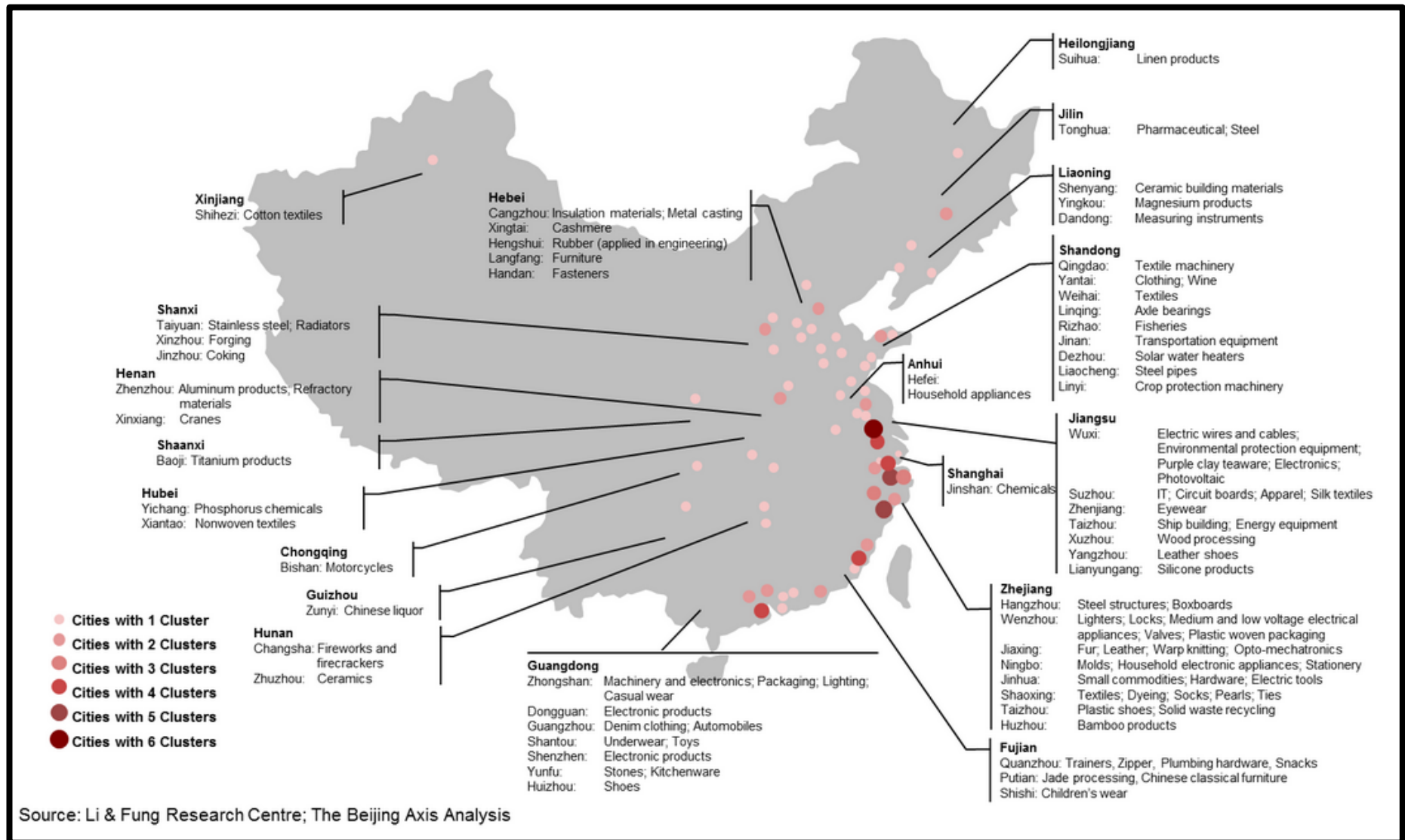
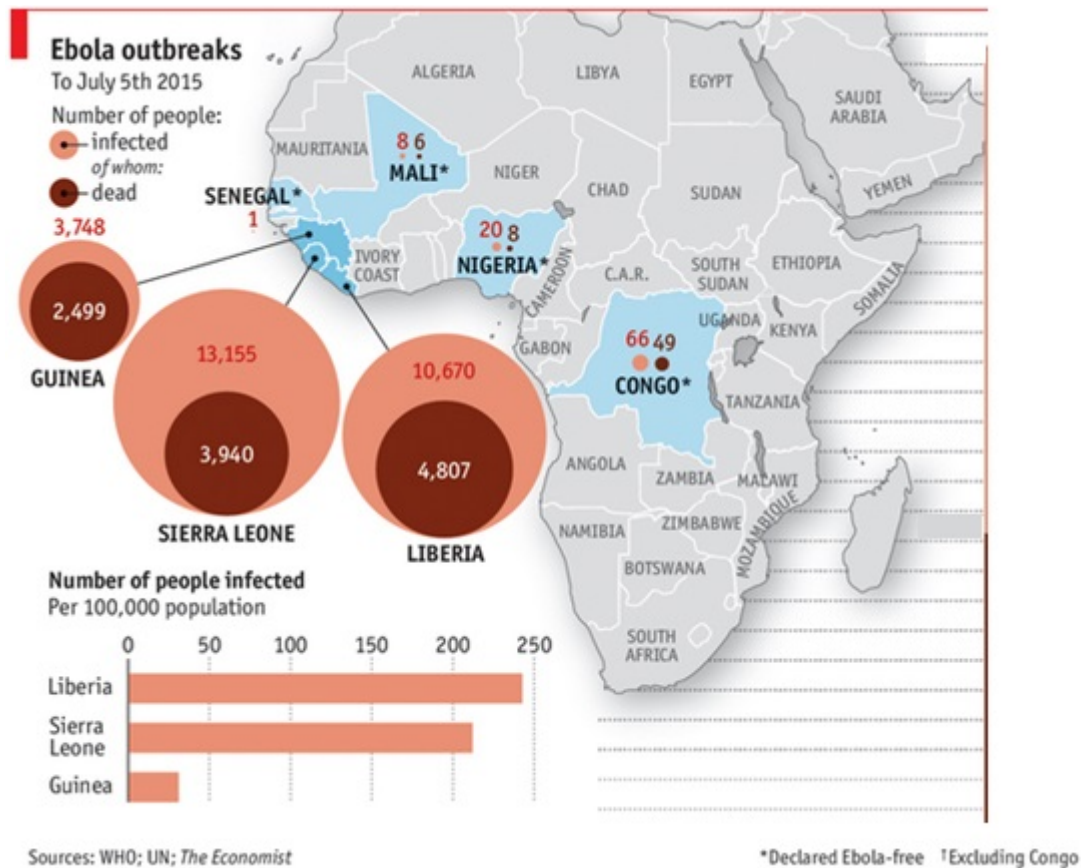


Figure 2A for Question 2



Source: <http://www.economist.com/blogs/graphicdetail/2015/07/ebola-graphics>

Figure 2B for Question 2

Frequently Asked Questions on Ebola virus disease

What is Ebola virus disease (EVD)?

Ebola is a severe, infectious often-fatal disease in humans and nonhuman primates (monkeys, gorillas, and chimpanzees) caused by infection with Ebola virus. It is very infectious and kills in a short time.

How is it spread?

The natural reservoir of the virus is unknown and it is not always clear how the virus first appears in humans. Usually the first person gets infected through contact with an infected animal.

People can be exposed to Ebola virus from direct physical contact with body fluids like blood, saliva, stool, urine, sweat etc. of an infected person and soiled linen used by a patient.

It can be spread through contact with objects, such as needles, that have been contaminated with infected secretions.

Information on Ebola from World Health Organisation.

Adapted from: <http://www.afro.who.int/en/clusters-a-programmes/dpc/epidemic-a-pandemic-alert-and-response/epr-highlights/3648-frequently-asked-questions-on-ebola-hemorrhagic-fever.html>

Figure 3A for Question 3

S/N	City	Population
1	London	8,173,900
2	Birmingham	1,073,000
3	Leeds	751,500
4	Sheffield	552,700
5	Cornwall	532,300
6	Bradford	522,500
7	County Durham	513,200
8	Manchester	503,100
9	Wiltshire	471,000
10	Liverpool	466,400

Source: UK Census Data, 2011

Figure 3B for Question 3

London's economy outperforming the rest of the UK

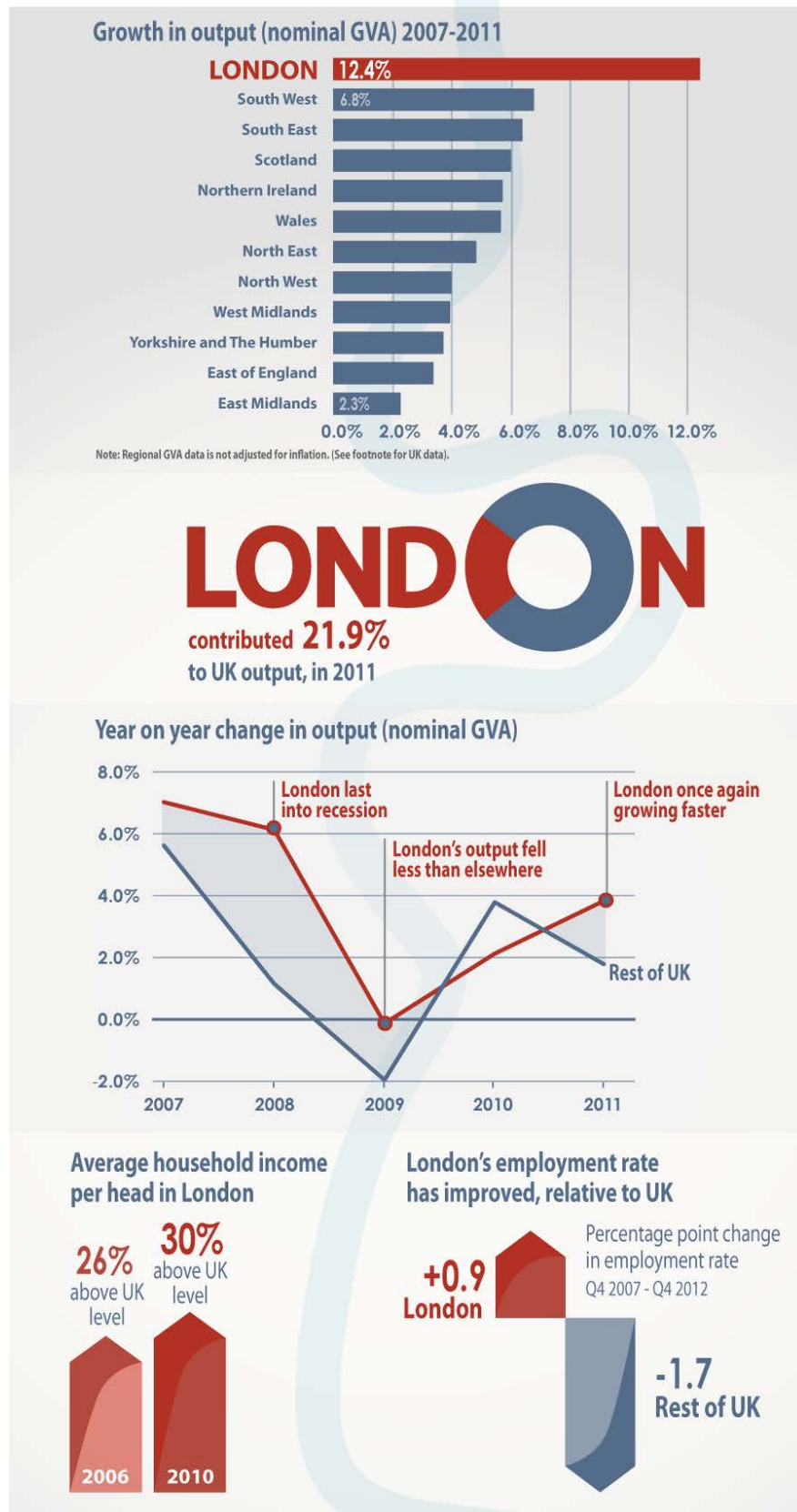


Figure 4A for Question 4

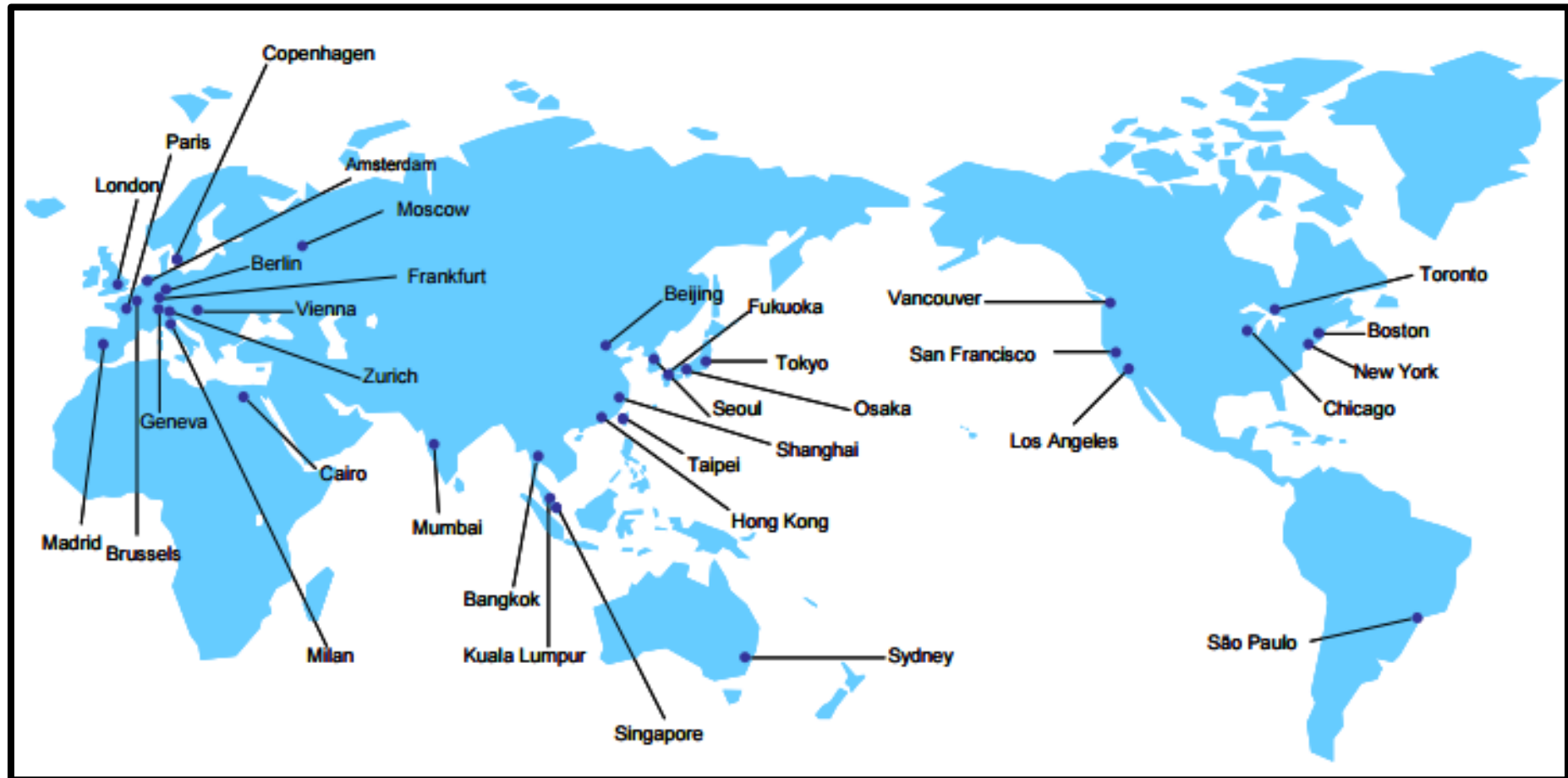


Figure 4B for Question 4

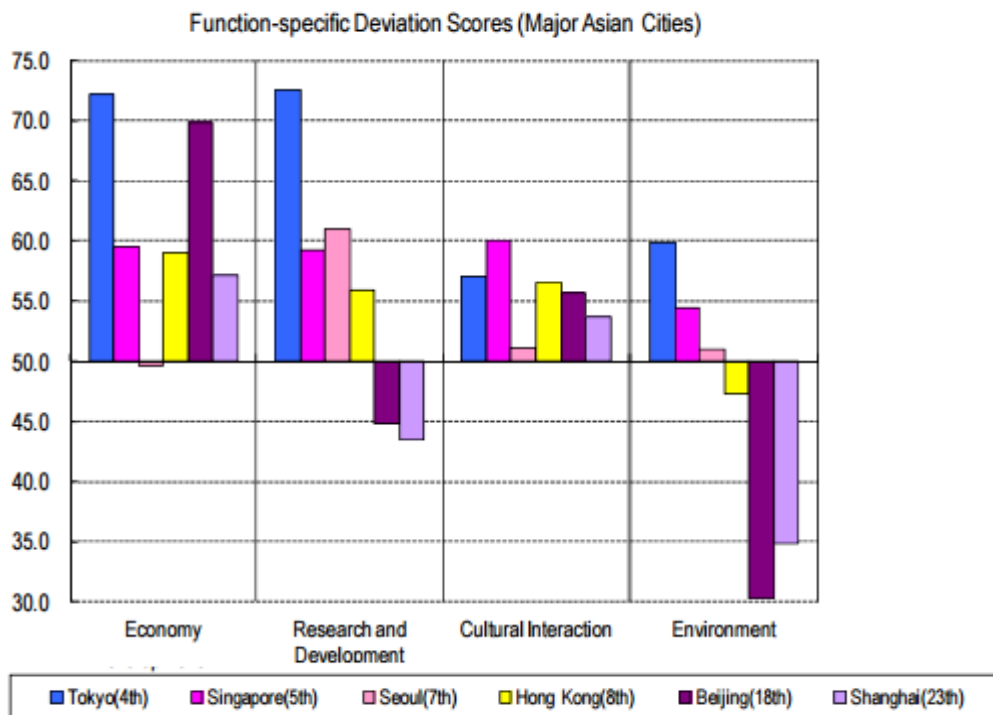


Figure 4C for Question 4



Source: Global Power City Index, 2011 http://www.mori-m-foundation.or.jp/english/research/project/6/pdf/GPCI2011_English.pdf