



CATHOLIC JUNIOR COLLEGE
In preparation for
General Certificate of Education Advanced Level
Higher 2

GEOGRAPHY

Paper 1

9730/01

31 August 2015

3 hours

READ THESE INSTRUCTIONS FIRST

This Insert contains all the Figures and the Photograph referred to in the questions.

This document consists of 5 printed pages.

[Turn over]

Figure 1A for Question 1

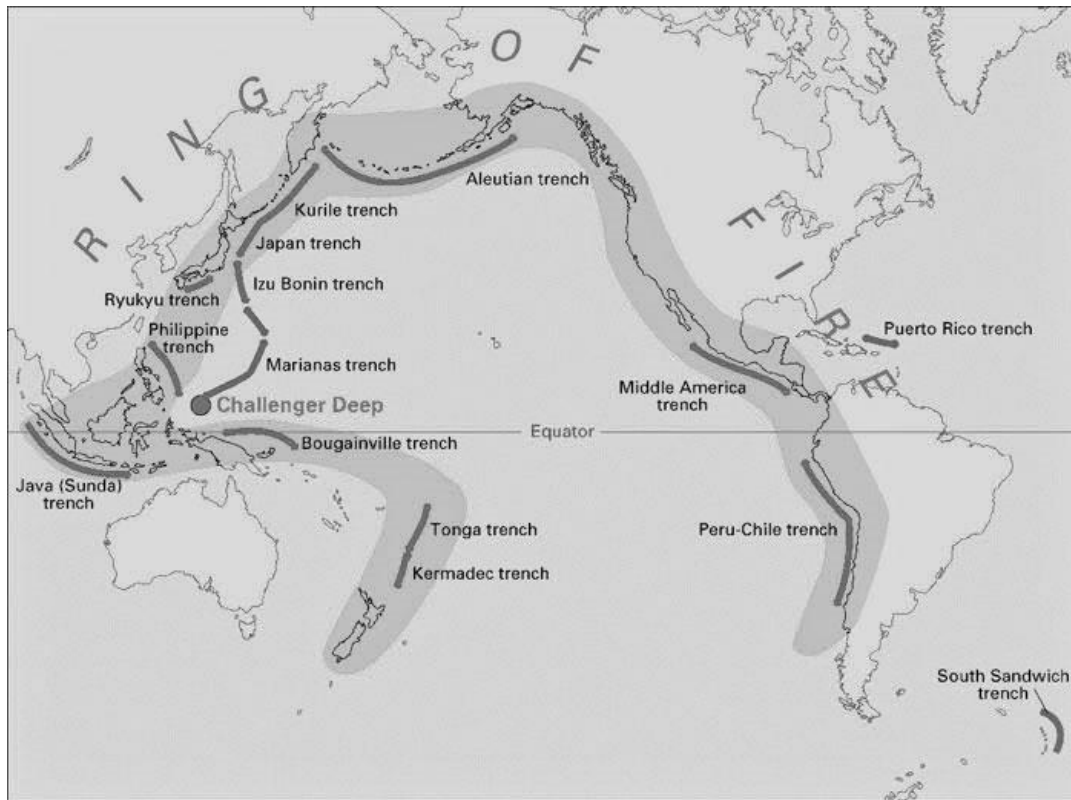


Figure 1B for Question 1

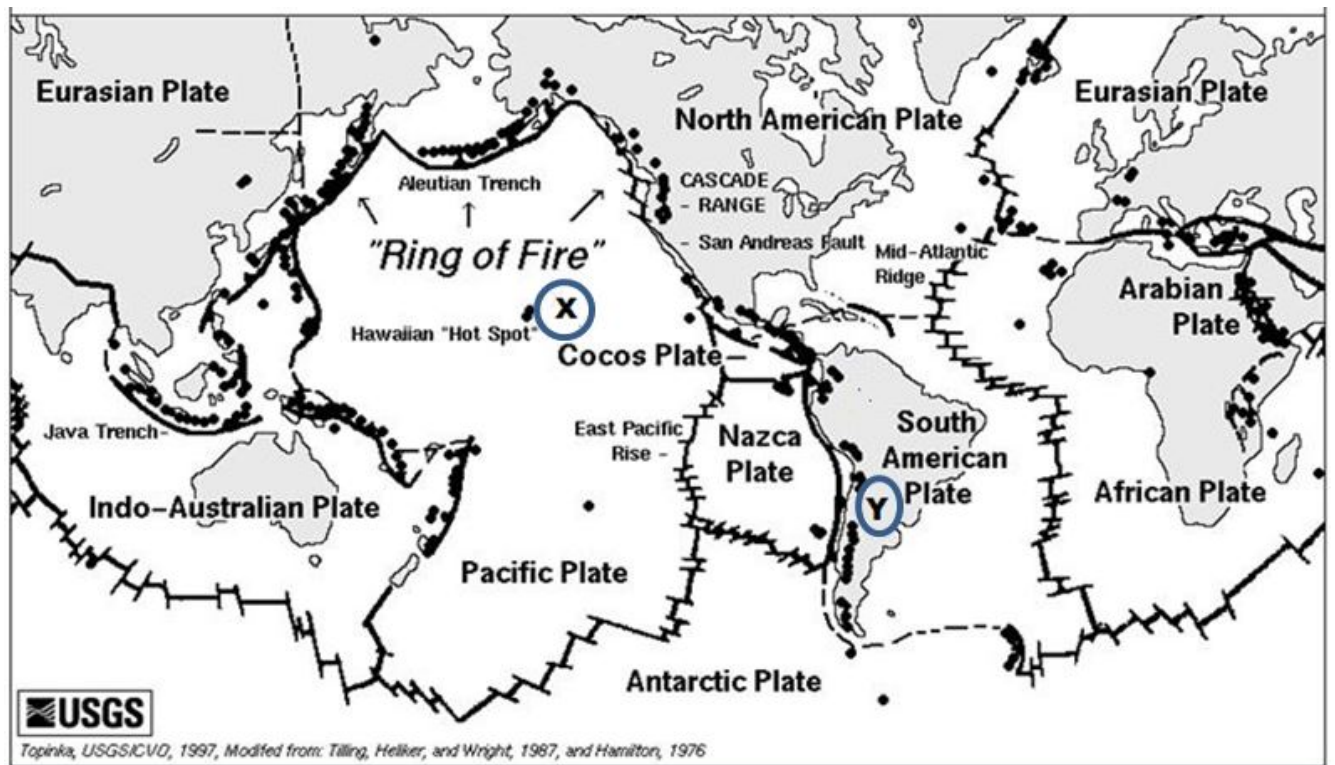


Figure 2 for Question 2

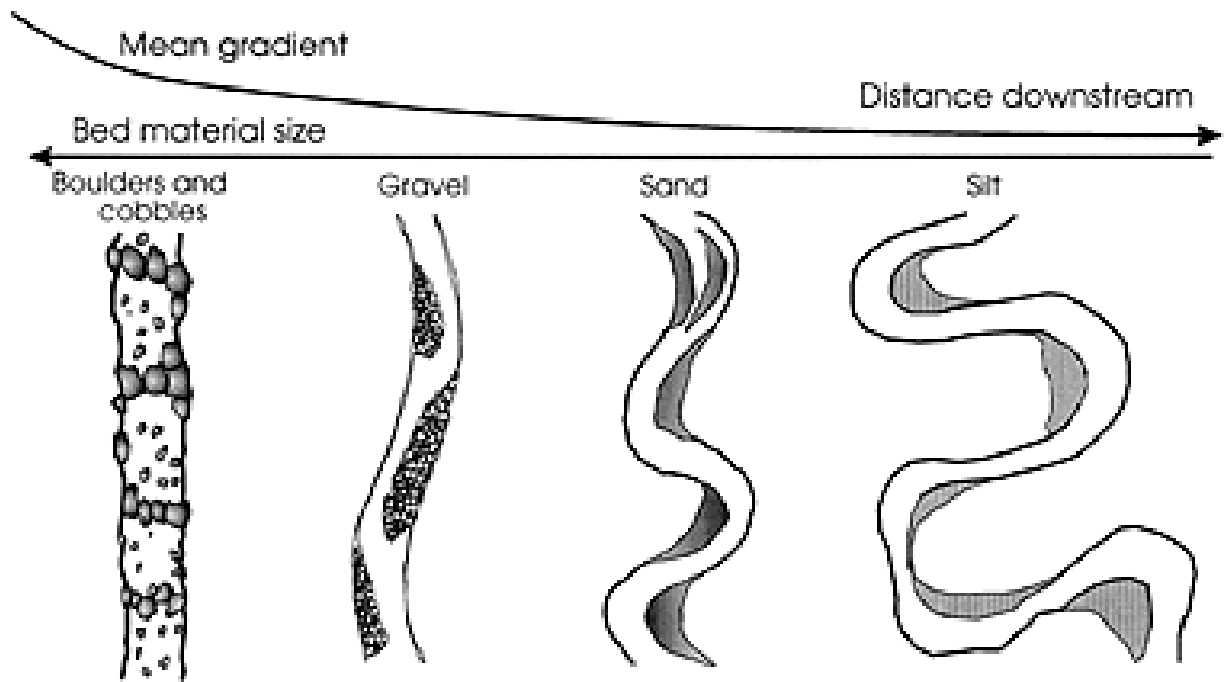


Figure 3A for Question 3

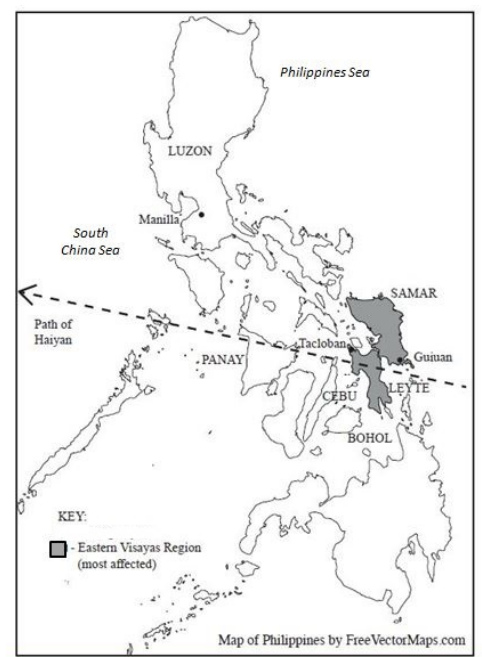


Figure 3C for Question 3

Lowest pressure	895 mb
Sustained wind speed	196 mph
Radius of hurricane-strength winds	53 miles
Peak strength	Category 5
Strength at landfall	Category 5 195 mph
Storm surge height	15 m
Rainfall	400 mm

Figure 3B for Question 3



Figure 4A for Question 4

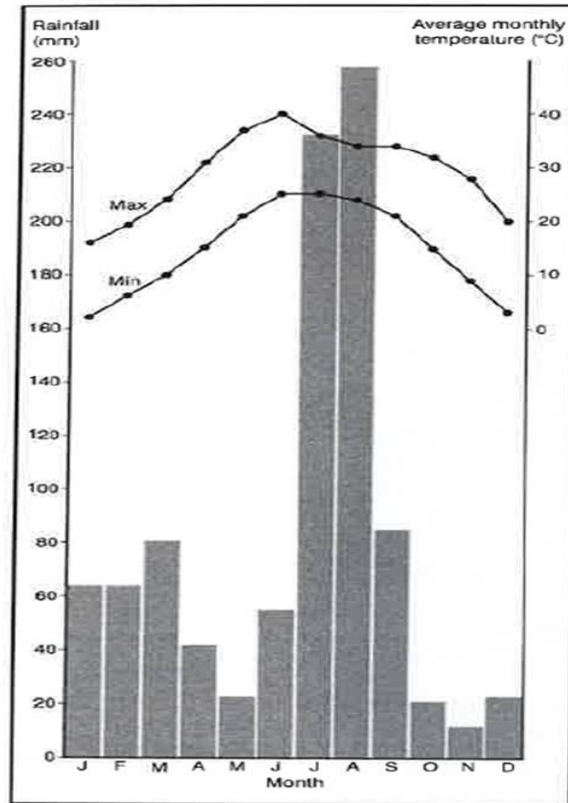


Figure 4B for Question 4

