

# VICTORIA JUNIOR COLLEGE PRELIMINARY EXAMINATION

**GEOGRAPHY Higher 1**

**8812**

**Monday 14<sup>th</sup> September 2015**  
**3 hours**

*victoria junior college victoria junior college victoria junior college victoria junior college victoria junior college  
victoria junior college victoria junior college victoria junior college victoria junior college victoria junior college  
victoria junior college victoria junior college victoria junior college victoria junior college victoria junior college  
victoria junior college victoria junior college victoria junior college victoria junior college victoria junior college  
victoria junior college victoria junior college victoria junior college victoria junior college victoria junior college  
victoria junior college victoria junior college victoria junior college victoria junior college victoria junior college  
victoria junior college victoria junior college victoria junior college victoria junior college victoria junior college  
victoria junior college victoria junior college victoria junior college victoria junior college victoria junior college*

## **READ THESE INSTRUCTIONS FIRST**

Write your name and class on all answer sheets that you hand in.  
Write in dark blue or black pen on both sides of the paper.  
You may use a soft pencil for any diagrams, graphs or rough working.  
Do not use staples, paper clips, highlighters, glue or correction fluid.

### **Section A**

Answer **four** questions

### **Section B**

Answer **one** question

### **Section C**

Answer **one** question

Sketch maps and diagrams should be drawn whenever they serve to illustrate an answer.  
The number of marks is given in brackets [ ] at the end of each question or part question.

You are reminded of the need for good English and clear presentation in your answers.  
At the end of the examination, fasten all your work securely together.

## Section A

Answer **four** questions.

Questions 1, 2 and 3 carry 12 marks and Question 4 carries 14 marks.  
You should allocate your time accordingly.

### Lithospheric Processes, Hazards and Management

- 1 Fig. 1 is a schematic diagram that shows the formation of volcanic islands due to hotspot activity.
- a) With reference to Fig. 1, describe and explain the formation of volcanic islands. [6]
  - b) Imagine you are a volcanologist in Hawaii. What information would you use in developing a hazard map for volcanic eruptions? [6]

### The Globalisation of Economic Activity

- 2 Fig. 2 shows the share of services in GDP for various countries in 1995.
- a) Describe the patterns of the share of services in GDP as shown in Fig. 2. [4]
  - b) Suggest how the patterns shown in Fig. 2 may change by 2050. [4]
  - c) Explain how private sector participation can impact the quinary sector. [4]

### Hydrologic Processes, Hazards and Management

#### 3 EITHER

Fig. 3 shows Manning's Equation.

- a) Define the term *hydraulic radius*. [1]
- b) With reference to Fig. 3, describe and explain how velocity changes with distance downstream in a drainage basin. [7]
- c) With reference to Fig. 3, explain how human activities may affect the velocity of a river. [4]

## Urban Issues and Challenges

### 3 OR

Fig. 4 shows urban growth in selected Asian countries.

- a) What is meant by urban growth? [1]
- b) With reference to Fig. 4, compare the patterns of urban growth of the selected Asian countries. [3]
- c) Account for the variations in the patterns of urban growth of the selected Asian countries. [5]
- d) Describe some consequences of urban growth. [3]

## Lithospheric and Hydrologic Processes, Hazards and Management

### 4 EITHER

Photograph A shows a river valley in an alpine region.

- a) Describe the key features of the river shown in Photograph A. [4]
- b) Explain how hydrological changes within this basin may affect
  - (i) river processes [6]
  - (ii) weathering processes [4]

## **The Globalisation of Economic Activity and Urban Issues and Challenges**

### **4 OR**

Fig. 5 shows the outlook for emerging cities' global influence, based on their strengths and vulnerabilities in 2012.

- a) With reference to Fig. 5, describe the relationship between cities' vulnerabilities and strengths and their global influence. [3]
- b) Explain how the vulnerabilities may influence a city's global influence. [5]
- c) Describe what governments can do to improve their city's global influence. [6]

**Section B Physical Geography**

Answer **one** question from this section.

**Lithospheric Processes, Hazards and Management**

**5 EITHER**

- a) Distinguish between slides, flows and heaves. [9]
- b) Assess the extent to which magnitude and frequency influence the severity of tectonic hazards. [16]

**5 OR**

- a) Describe the evidence for Plate Tectonics Theory. [9]
- b) To what extent are granite and limestone landforms in tropical and temperate regions related to present climatic conditions? [16]

**Hydrologic Processes, Hazards and Management**

**6 EITHER**

- a) Describe the differences in the nature of braided and meandering channels. [9]
- b) To what extent are floods better managed in developed countries (DCs) as compared to less developed countries (LDCs)? [16]

**6 OR**

- a) Explain the factors that affect the movement of water through a drainage basin. [9]
- b) To what extent do you agree that braided and meandering channels are found in very different locations? [16]

## Section C Human Geography

Answer **one** question from this section.

### The Globalisation of Economic Activity

**7 EITHER**

- a) Discuss the extent to which the new international division of labour (NIDL) is evident in the global economy. [9]
- b) To what extent have states been successful in facilitating economic development? [16]

**7 OR**

- a) Explain how supranational bodies have helped to contribute to the globalisation of economic activity. [9]
- b) To what extent are developed countries (DCs) benefitting the most from the globalisation of economic activity? [16]

### Urban Issues and Challenges

**8 EITHER**

- a) Account for decentralisation in urban areas in developed countries (DCs). [9]
- b) How far do you agree that segregation is an inevitable outcome of urbanisation? [16]

**8 OR**

- a) Compare the reasons for homelessness in urban areas in developed countries (DCs) and developing countries (LDCs). [9]
- b) To what extent is improving the public transport system the best solution to ease congestion in cities in developing countries (LDCs)? [16]

**VICTORIA JUNIOR COLLEGE  
PRELIMINARY EXAMINATION**

**GEOGRAPHY Higher 1**

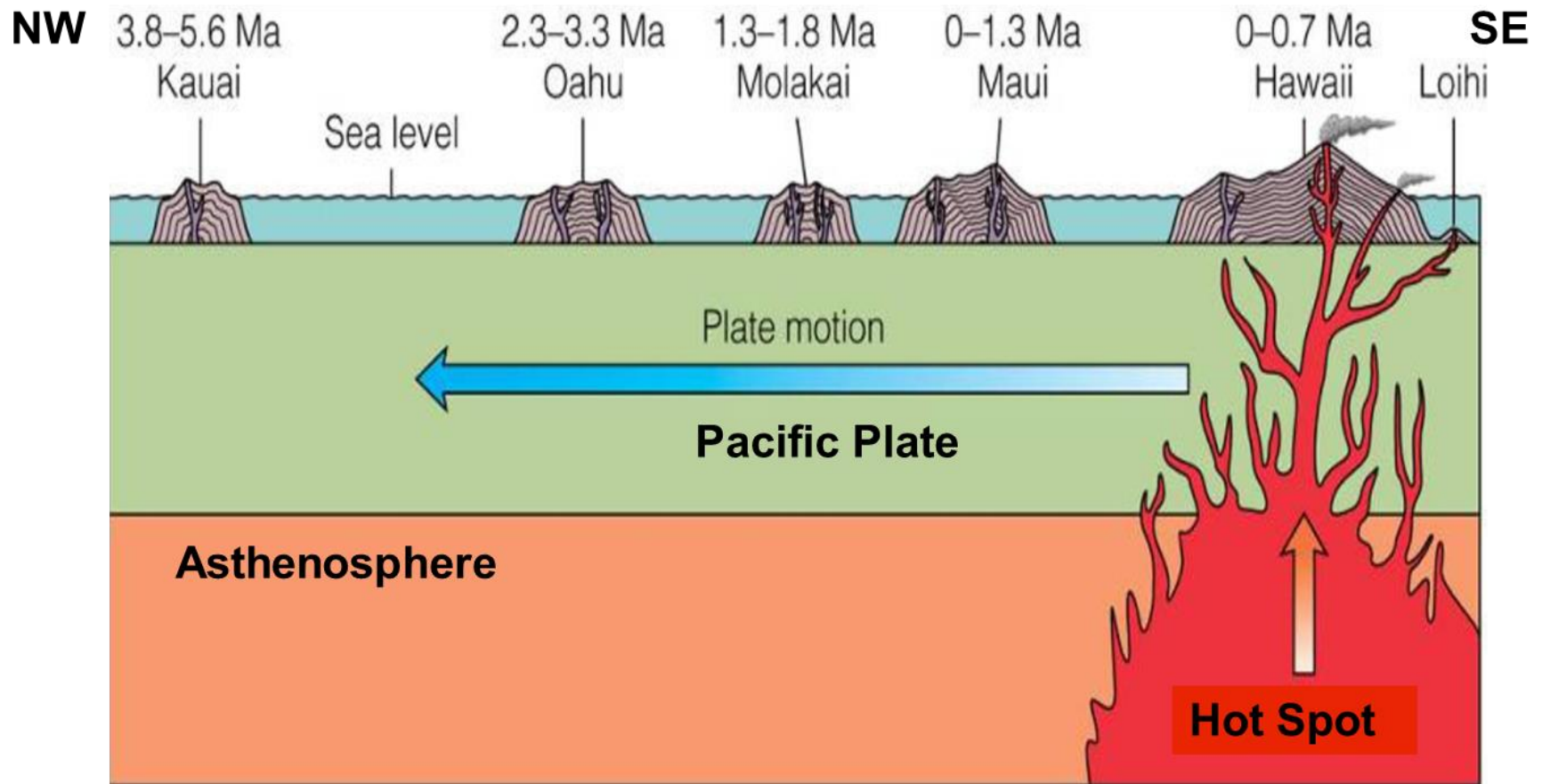
**8812**

**Monday 14<sup>th</sup> September 2015  
3 hours**



Fig. 1 for Question 1

## Formation of volcanic islands due to hot spot activity

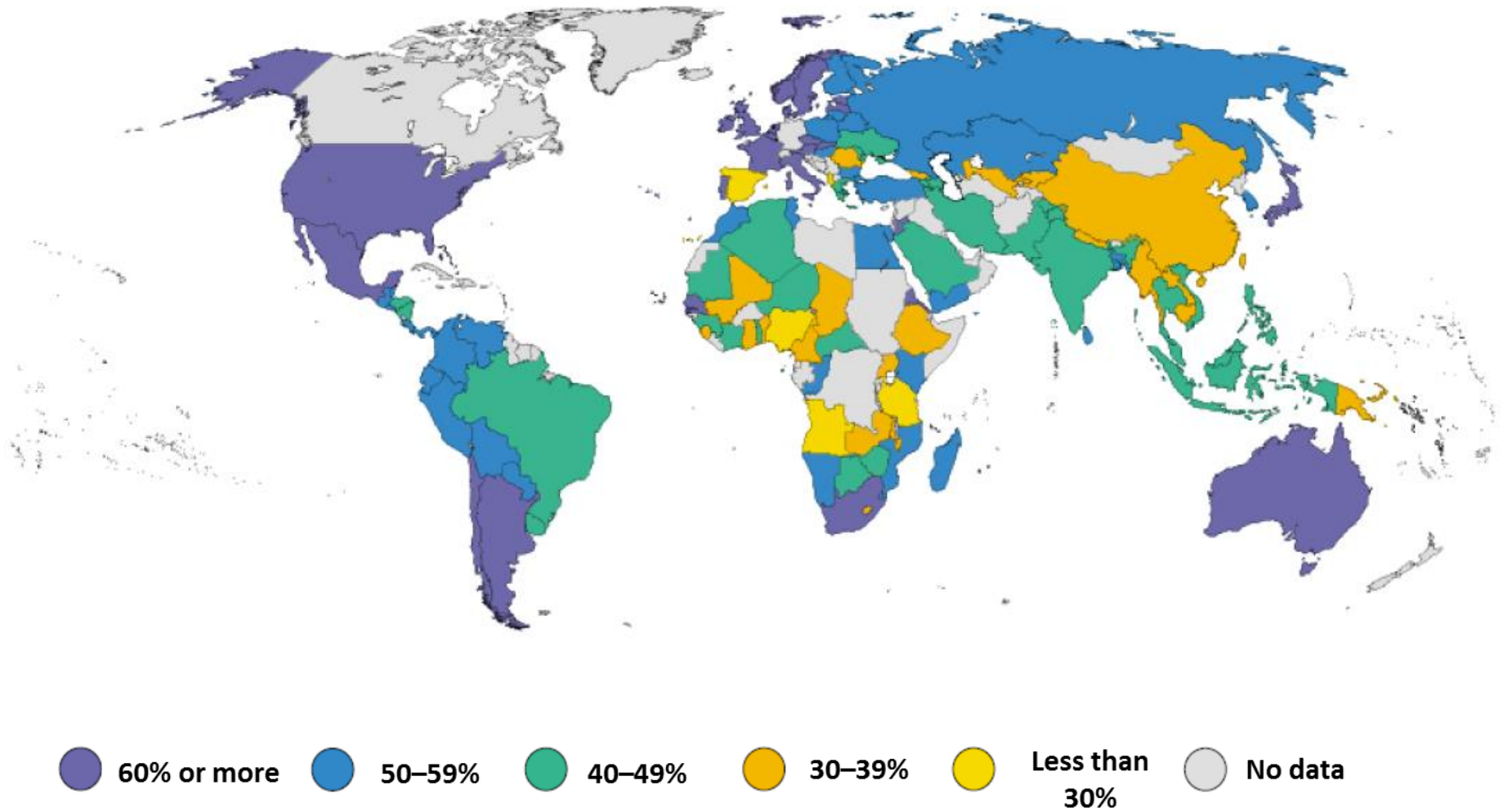


\*Ma – million years ago



Fig. 2 for Question 2

Share of services in GDP for various countries in 1995



**BLANK PAGE**

Fig. 3 for Question 3 EITHER

Manning's Equation

$$V = \frac{R^{2/3} S^{1/2}}{n}$$

V is average velocity

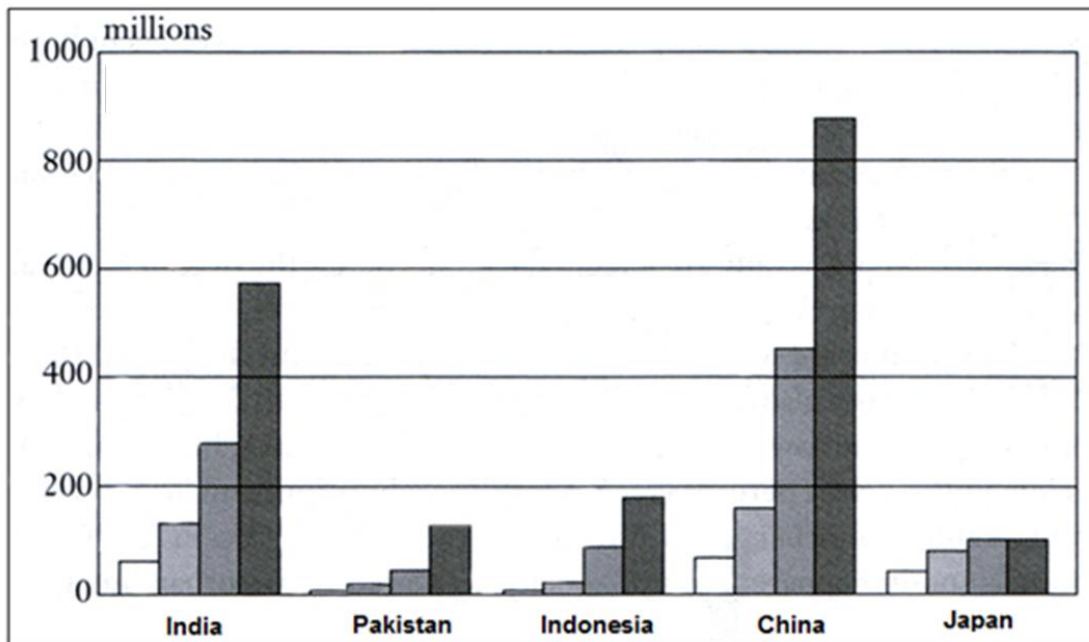
R = hydraulic radius

S = channel slope

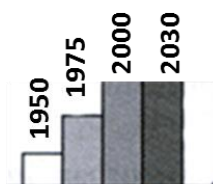
n = Manning's roughness coefficient

Fig. 4 for Question 3 OR

Urban growth in selected Asian countries



Key:



**BLANK PAGE**



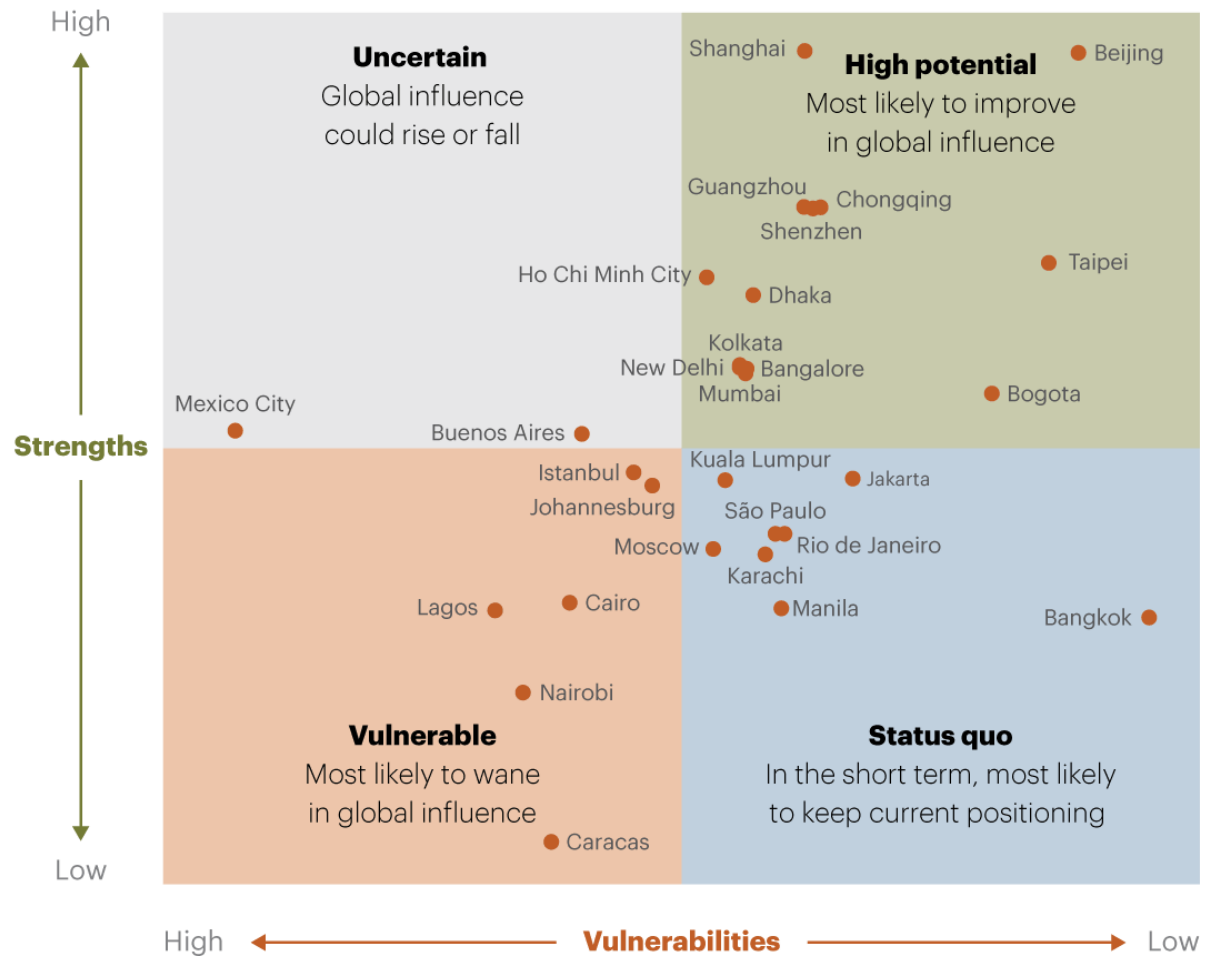
**Photograph A for Question 4 EITHER**

**River valley in an alpine region**



Fig. 5 for Question 4 OR

**Outlook for emerging cities' global influence, based on their strengths and vulnerabilities in 2012**



Note: "Strengths" include gross domestic product growth, middle class growth, infrastructure improvement, and improvement in ease of doing business; "Vulnerabilities" include higher pollution levels, increased insecurity and instability rates, corruption and a deteriorating healthcare system.