

**YISHUN JUNIOR COLLEGE**  
**JC2 PRELIMINARY EXAMINATIONS 2015**

**ART**

**Higher 1 & 2**

**8879, 9750/01**  
**24/08/2015 Monday**  
**0800-1100 hrs**

**PAPER 1: STUDY OF VISUAL ART**

**3 HOURS**

Additional Materials: Writing Paper  
Colour Insert



**INSTRUCTIONS TO CANDIDATES**

Write your name and CTG on all the work you hand in.  
Write in dark blue or black pen on both sides of the writing paper.  
Do not use staples, paper clips, highlighters, glue or correction liquid.

**Section A**

Answer any **one** of the two questions.

**Section B**

Answer any **one** of the two questions.

**Section C**

Answer any **one** of the two questions.

The Insert contains all the artworks referred to in the question paper.  
You are reminded of the need for good English and clear presentation in your answers.

At the end of the examination, fasten all your answers securely together with the string provided.  
The number of marks is given in brackets [ ] at the end of each question or part question.

### **Section A: Structured Questions**

Answer all three parts (a-c) of **one** question.

**1. *The Ferry* by Chen Wen Hsi, c.1952 [Fig. 1]**

84 x 100 cm. Oil on canvas.

Collection: Singapore Art Museum

- (a) Analyse the colour, brushwork and form in this painting. [10m]
- (b) Evaluate what influences are evident in this work. [10m]
- (c) To what extent do the works of Chen Wen Hsi reflect the aims of the Nanyang style? [10m]

**2. *Model* by Antony Gormley, 2012 [Fig. 2, 2a, 2b]**

100 tonnes of sheet steel construction.

White Cube, Bermondsey, London

- (a) Assess the subject matter of this work. [10m]
- (b) Comment on the techniques and ideas presented by the artist in this work. [10m]
- (c) Compare this work with another installation by Gormley or another artist. [10m]

### **Section B: Structured Comparison Questions**

Answer all three parts (a-c) of **one** question.

3. ***Electric Chair* by Andy Warhol, 1965** [Fig. 3a]

4 pieces of screen print and acrylic paint on canvas, 56.2 x 71.1 cm (each)

Collection of Tate

***Great Criticism – Hermes* by Wang Guangyi, 2004** [Fig. 3b]

Oil on canvas, 120 x 149.5 cm

Private Collection, Asia

- (a) Describe the visual appearance of these paintings. [10m]
- (b) Comment on the techniques and artists' intentions in both works. [10m]
- (c) Explain how prevailing cultures have influenced these works. [10m]

4. ***Self-portrait* by Chuck Close, 2004-5** [Fig. 4a]

Oil on canvas, 259.1 x 218.4 cm

Private Collection, New York.

***Self (ongoing project)* by Marc Quinn, 2011** [Fig. 4b, 4c]

Blood (artist's), stainless steel, perspex, refrigeration equipment, 82" by 25" by 25"

- (a) Analyse the aims of the artists in their portrayal of Self as subject matter. [10m]
- (b) Assess the artists' different use of materials and techniques. [10m]
- (c) In your opinion, explain which work is more effective. [10m]

**Section C: Essay Questions**

Answer **one** question.

5. Compare the different techniques and visual appearance of artworks by **two** Singapore Pioneer painters who painted in the Nanyang Style.

[30]

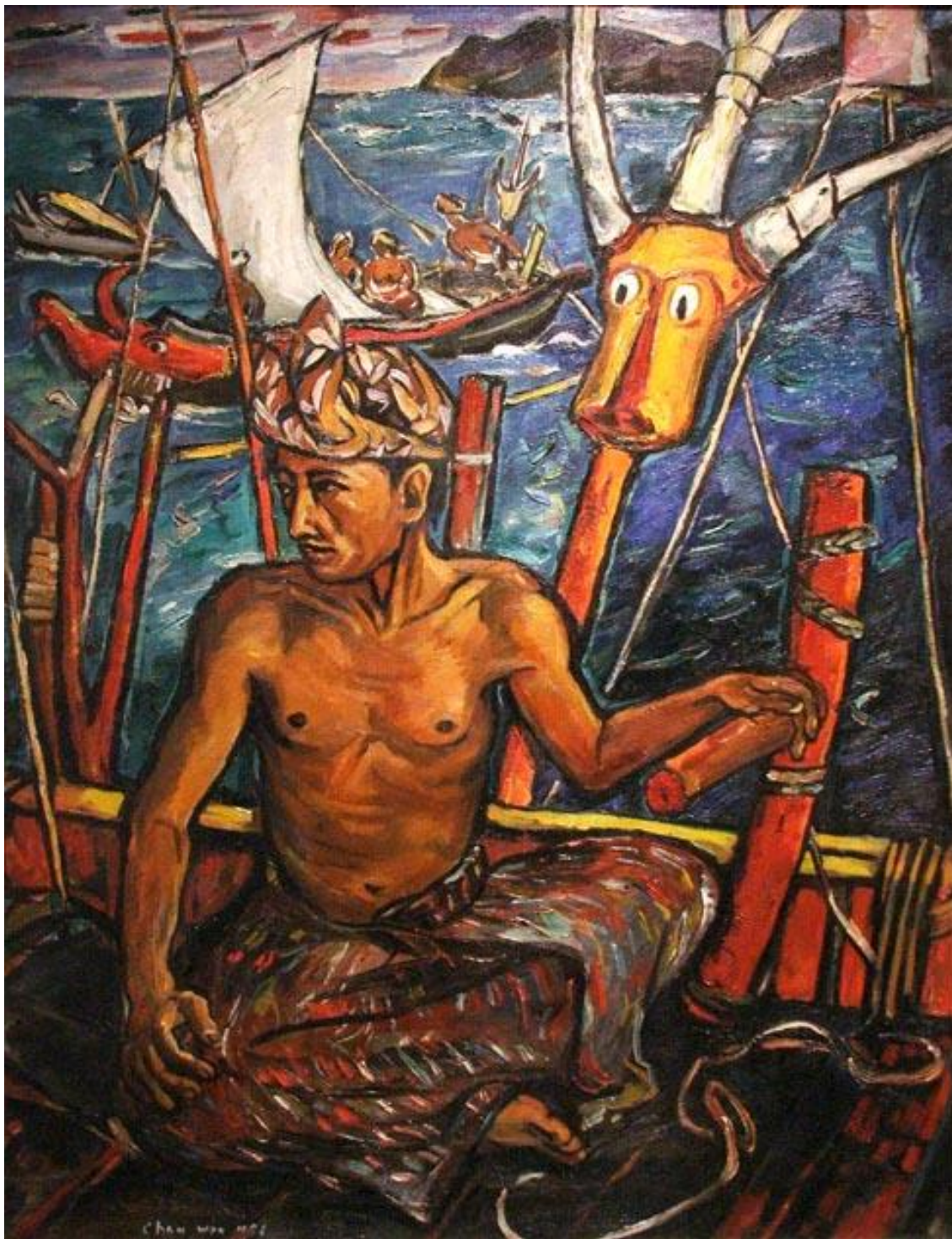
6. Discuss the ideas, materials used and techniques involved in the works produced by any **two** of the following artists:

Mona Hatoum  
Kartika Affandi  
Alberto Giacometti  
Made Wianta  
Pablo Picasso  
Hendra Gunawan

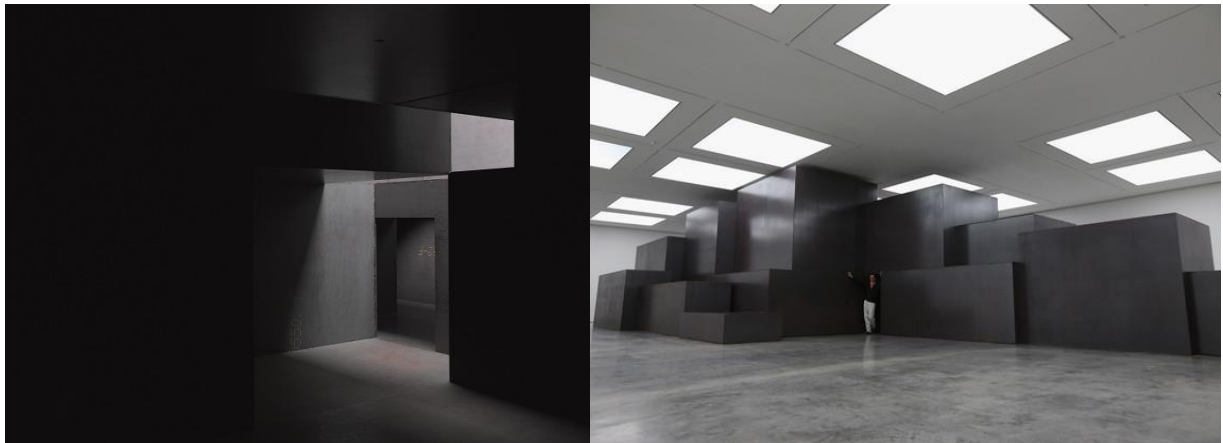
[30]

**-END OF PAPER-**

\*\*\*\*\* INSERT \*\*\*\*\*

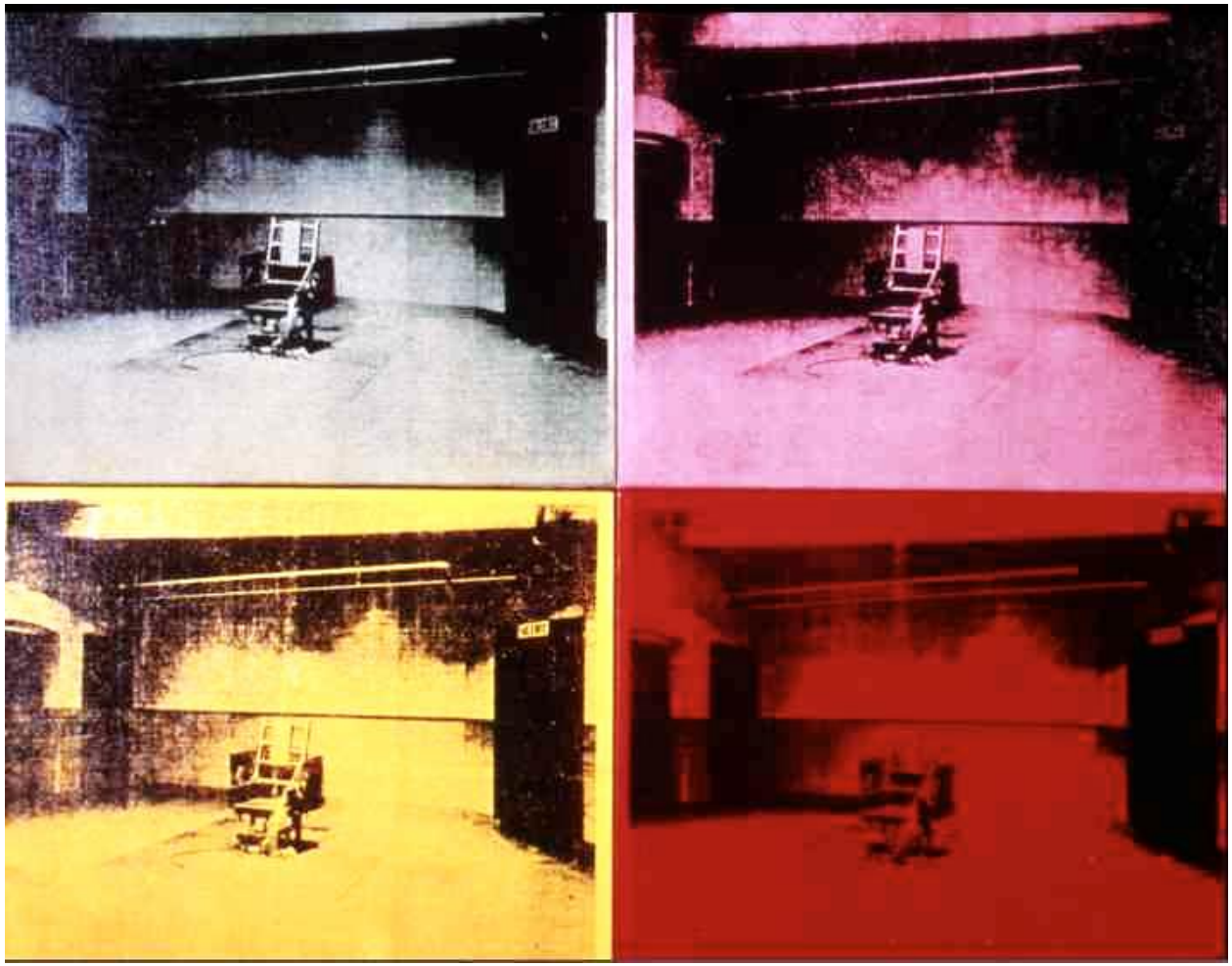


**Fig. 1**  
***The Ferry (c.1952)* by Chen Wen Hsi**  
84 x 100 cm. Oil on canvas  
Collection: Singapore Art Museum

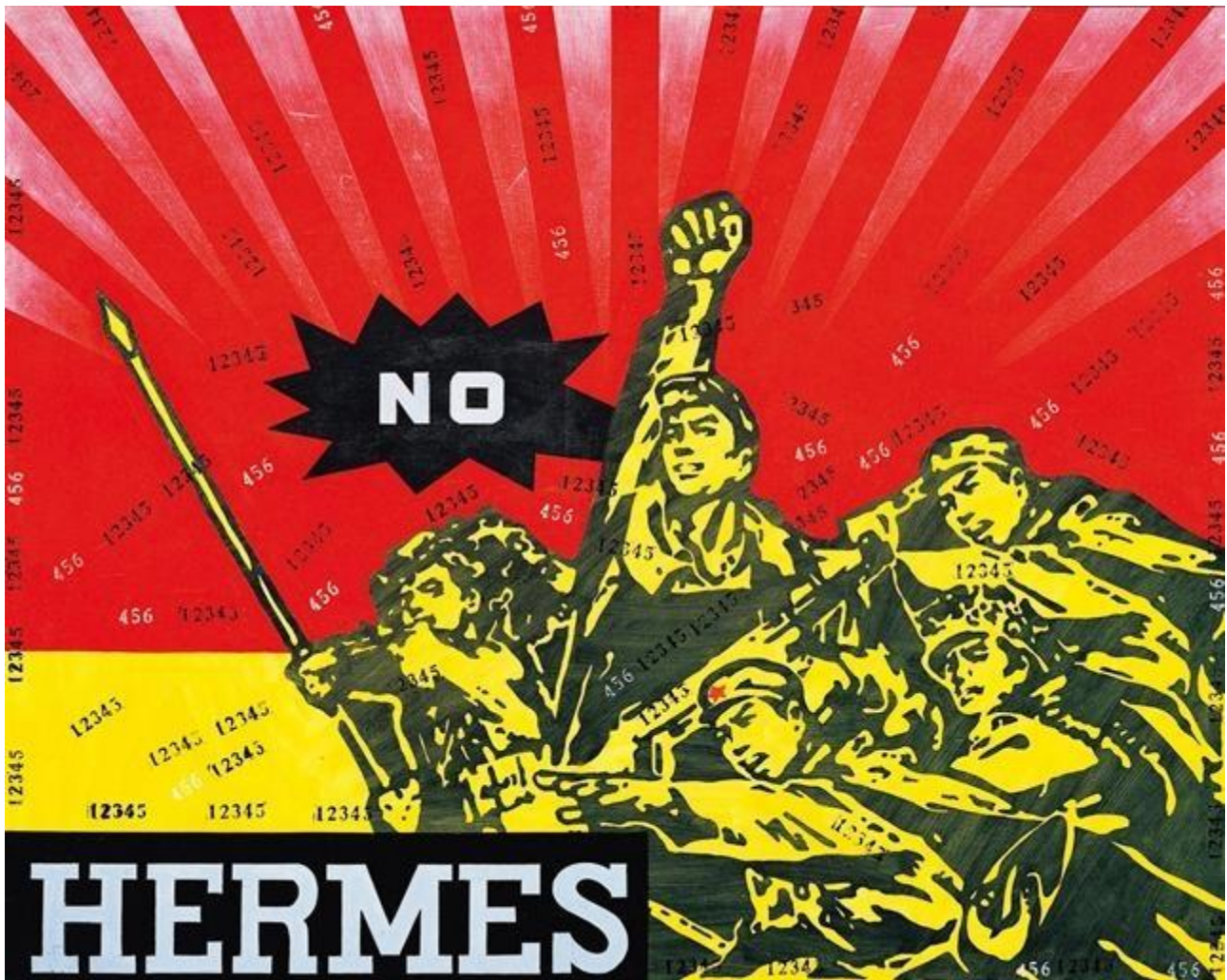


**Fig. 2a & 2b**  
***Model* by Antony Gormley, 2012**  
 100 Tonnes sheet steel construction  
 White Cube Gallery, London, UK





**Fig. 3a**  
***Electric Chair* by Andy Warhol, 1965**  
4 pieces of Screen print and acrylic paint on canvas, 56.2 x 71.1 cm (each)  
Collection of Tate Madrid



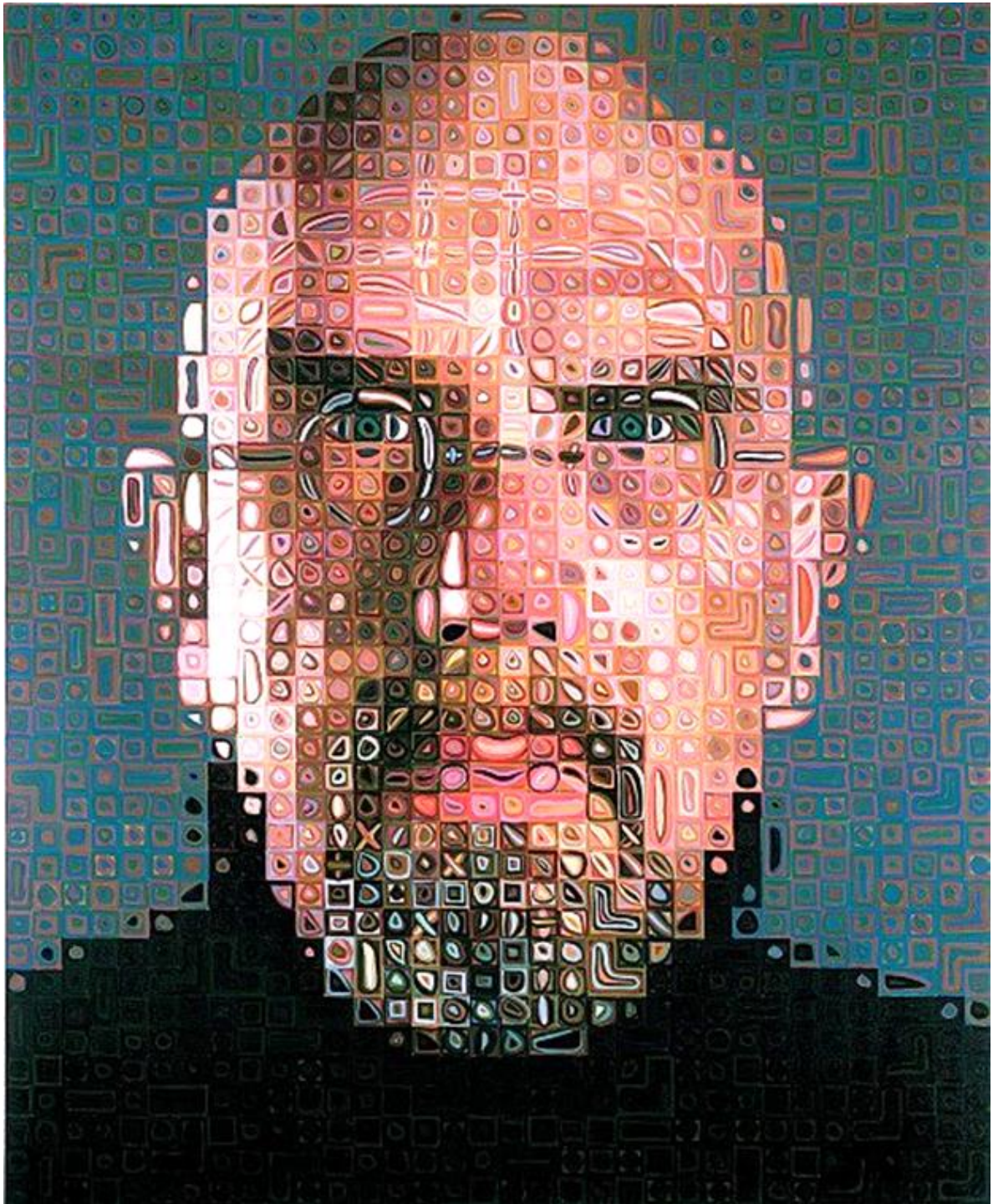
**Fig. 3b**

***Great Criticism – Hermes* by Wang Guangyi, 2004**

Oil on canvas, 120 x 149.5 cm

Private Collection, Asia





**Fig. 4a**  
***Self-Portrait* by Chuck Close, 2004-5**  
Oil on canvas, 259.1 x 218.4 cm  
Private Collection, New York.



**Fig. 4b & 4c**

***Self* by Marc Quinn, 2011**  
 Blood/stainless steel, Perspex,  
 refrigeration equipment  
 82" by 25" by 25"

**-END OF INSERT-**