

<b>Name:</b>		<b>Index Number:</b>		<b>Class:</b>	
--------------	--	----------------------	--	---------------	--



# DUNMAN HIGH SCHOOL

## Preliminary Examination

### Year 6

## ART

Paper 1 Study of Visual Arts

**8879, 9750/1**

**23 September 2015**

**3 hours**

Additional Materials:      Answer Paper  
   Insert

### READ THESE INSTRUCTIONS FIRST

Write your name, index number and class on all the work you hand in.

Write in dark blue or black pen. You may use a soft pencil for any drawings or diagrams.

Do not use staples, paper clips, highlighters, glue or correction fluid.

DO **NOT** WRITE ON THE MARGINS.

Answer **three** questions:

All parts (a-c) of **one** from Section A.

All parts (a-c) of **one** from Section B.

**One** from Section C.

At the end of the examination, fasten all your work securely together at the top left-hand corner.

All questions in this paper carry equal marks.

For examiner's use only:

Section A	/ 30
Section B	/ 30
Section C	/ 30
<b>Total</b>	<b>/ 90</b>

At the end of the examination, fasten all your work securely together.

The number of marks is given in brackets [ ] at the end of each question or part question.

This document consists of **3** printed pages, **1** blank page and **1** Insert.

**[Turn over]**

### Section A: Structured Questions

Answer all three parts (a – c) of **one** question.

1. *I Like America and America Likes Me* by Joseph Beuys 1974 [Fig. 1]  
Performance art with photo documentation  
René Block Gallery, New York
  - (a) Discuss the set-up and the use of material in this work. [10]
  - (b) Comment on the ideas expressed in this work. [10]
  - (c) To what extent do works of this kind make an effective art form? [10]

Total [30]
  
2. *Adjusting the Waistband* by Liu Kang 1997 [Fig. 2]  
Oil on canvas, 170 x 118cm  
Collection of Liu Tow Sen Ong, Zhen Min
  - (a) Comment on the visual appearance of this work. [10]
  - (b) Assess the subject matter of this work. [10]
  - (c) Evaluate what influences are evident in this work. [10]

Total [30]

### Section B: Structured Comparison Questions

Answer all three parts (a – c) of **one** question.

3. *Mother and Child* by Ng Eng Teng 1996 [Fig. 3a]  
Bronze, 300 x 255 x 70 cm  
Tampines Central Park, Singapore  
  
*Draped Reclining Mother and Baby* by Henry Moore 1983 [Fig. 3b]  
Bronze, 265.5cm x 82.2cm  
The New York Botanic Gardens, New York, USA
  - (a) Comment on the forms and techniques employed by the artists. [10]
  - (b) Compare the ways in which the artists chose to depict human relationships. [10]
  - (c) In your opinion, which work is more successful as public art? [10]

Total [30]

4. *Interlaced (Sago Street)* by Chua Ek Kay 2001 [Fig. 4a]  
Ink and colour on paper, 69 x 70 cm  
Singapore Management University Collection, Singapore

*Autumn Rhythm (Number 30)* by Jackson Pollock 1950 [Fig. 4b]  
Enamel paint on un-primed canvas, 266.7 x 525.8 cm  
The Metropolitan Museum of Art, New York, USA

- (a) Compare the visual appearance of these two artworks. [10]
- (b) Comment on how the choice of medium and technique challenges traditional painting. [10]
- (c) Evaluate how these two works exemplify the qualities of abstraction. [10]

Total [30]

### Section C: Essay Questions

Answer **one** question.

5. Analyse and compare how **two** of the following artists respond to social issues in their societies.

Redza Piyadasa  
Mona Hatoum  
Chua Mia Tee  
Dede Eri Supria  
Duane Hanson

Total [30]

6. Analyse the treatment of the human form shown in the work of **two** of the following:

Chua Mia Tee  
Dede Eri Supria  
Ron Mueck

Total [30]

**BLANK PAGE**

<b>Name:</b>		<b>Index Number:</b>		<b>Class:</b>	
--------------	--	----------------------	--	---------------	--



## **DUNMAN HIGH SCHOOL**

### **Preliminary Examination**

### **Year 6**

---

## **ART**

**8879, 9750/1**

Paper 1 Study of Visual Arts

**23 September 2015**

INSERT

Additional Materials:      Answer Paper  
   Insert

**3 hours**

---

### **READ THESE INSTRUCTIONS FIRST**

This Insert contains illustrations for the questions.

Fig. 1 refers to Question 1.

Fig. 2 refers to Question 2.

Fig. 3a and Fig.3b refer to Question 3.

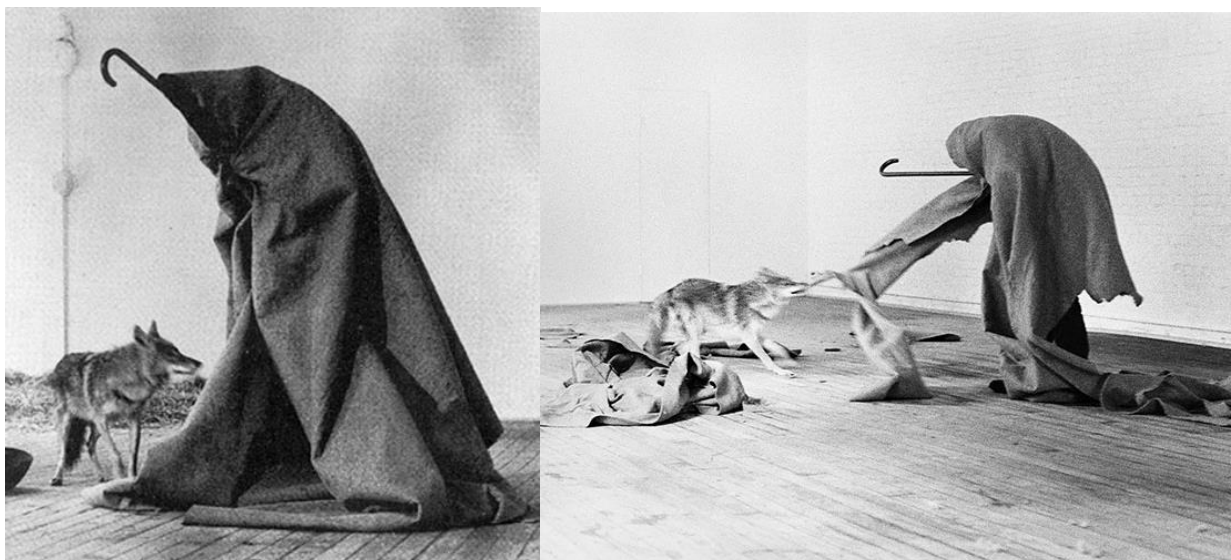
Fig. 4a and Fig. 4b refer to Question 4.

---

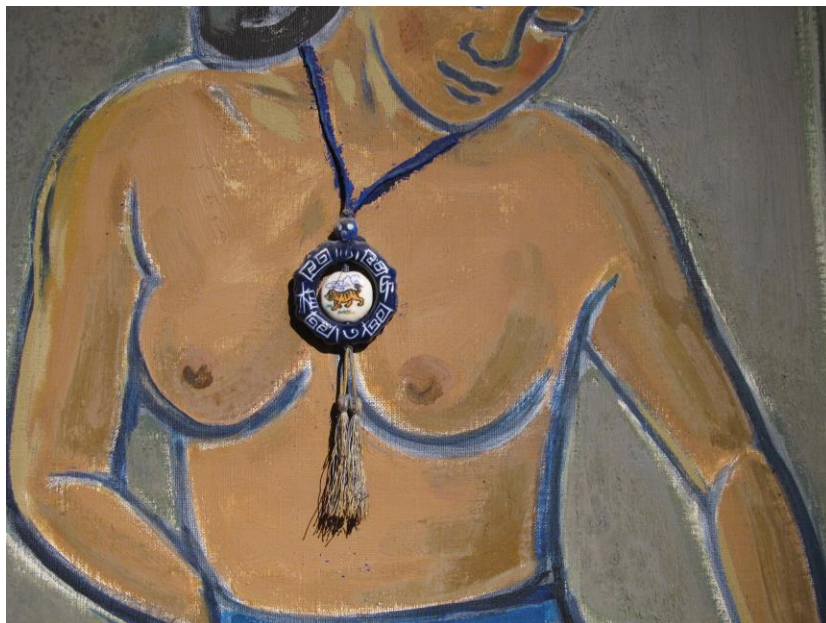
This document consists of **7** printed pages and **1** blank page.

**[Turn over]**

**Fig. 1:** *I Like America and America Likes Me* by Joseph Beuys 1974  
Performance art with photo documentation  
René Block Gallery, New York



**Fig. 2:** *Adjusting the Waistband* by Liu Kang 1997  
 Oil on canvas, 170 x 118cm  
 Collection of Liu Tow Sen Ong, Zhen Min





**Fig. 3a:** *Mother and Child* by Ng Eng Teng 1996  
Bronze, 300 x 255 x 70 cm  
Tampines Central Park, Singapore





**Fig. 3b:** *Draped Reclining Mother and Baby* by Henry Moore 1983  
Bronze, 265.5 x 82.2cm  
The New York Botanic Gardens, New York, USA





**Fig. 4a:** *Interlaced (Sago Street)* by Chua Ek Kay 2001  
Ink and colour on paper, 69 x 70 cm  
Singapore Management University Collection, Singapore





**Fig. 4b:** *Autumn Rhythm (Number 30)* by Jackson Pollock 1950  
Enamel paint on un-primed canvas, 266.7 x 525.8 cm  
The Metropolitan Museum of Art, New York, USA



**BLANK PAGE**