



RAFFLES INSTITUTION
Preliminary Examinations 2014

H1 GEOGRAPHY

8812/01

Paper 1

Duration: 3 hours

INSERT 1

READ THESE INSTRUCTIONS FIRST

This Insert contains all the figures and tables referred to in the question paper.

INSERT

This document consists of 7 printed pages including this page.

Figure 1 for Question 1

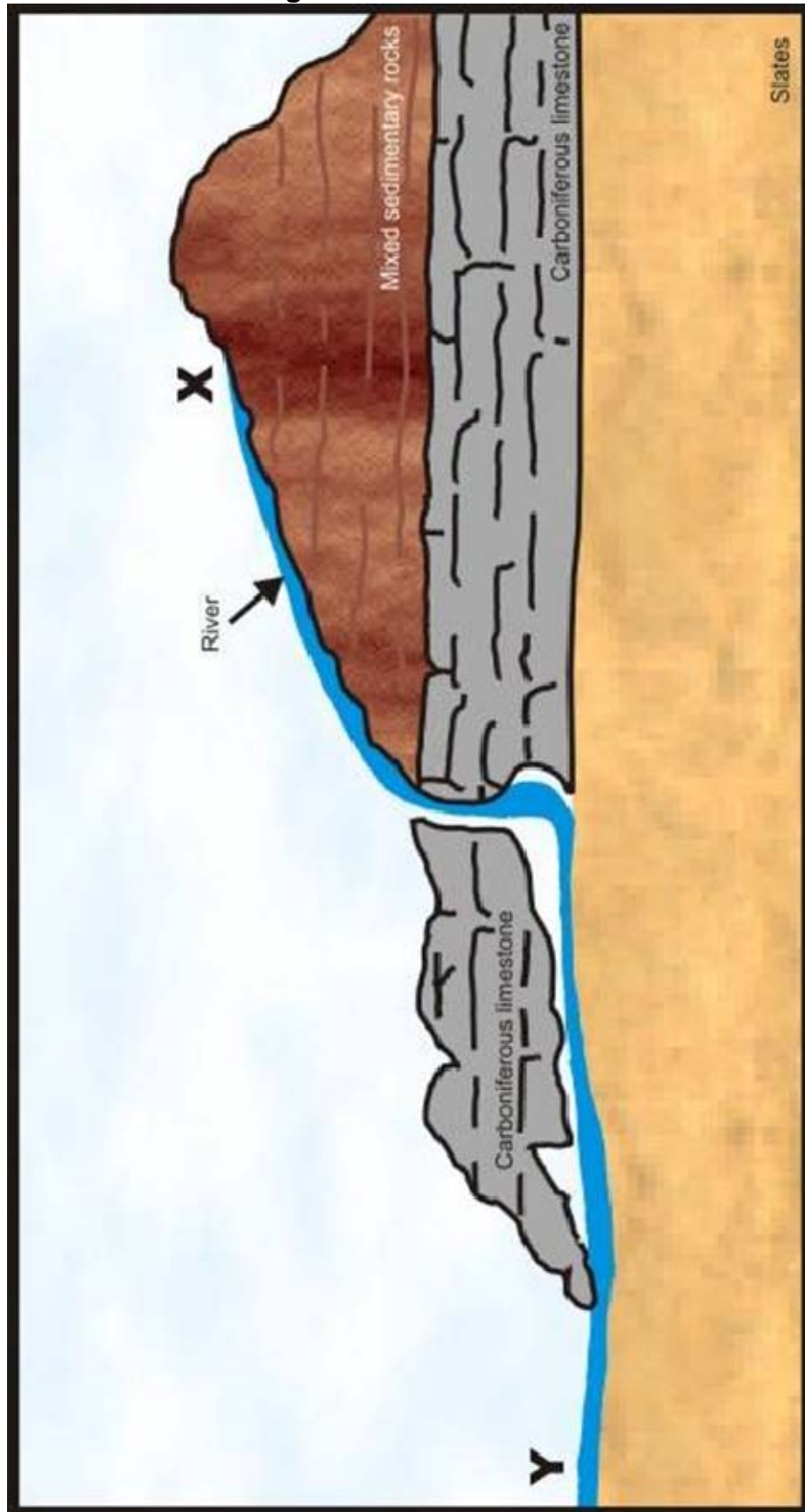


Figure 2 for Question 2.

This figure shows upcoming new research centres across the globe.



Figure 3 for Question 3 EITHER

DISCHARGE PATTERNS FOR TWO RIVERS RECEIVING SIMILAR RAINFALL EVENTS

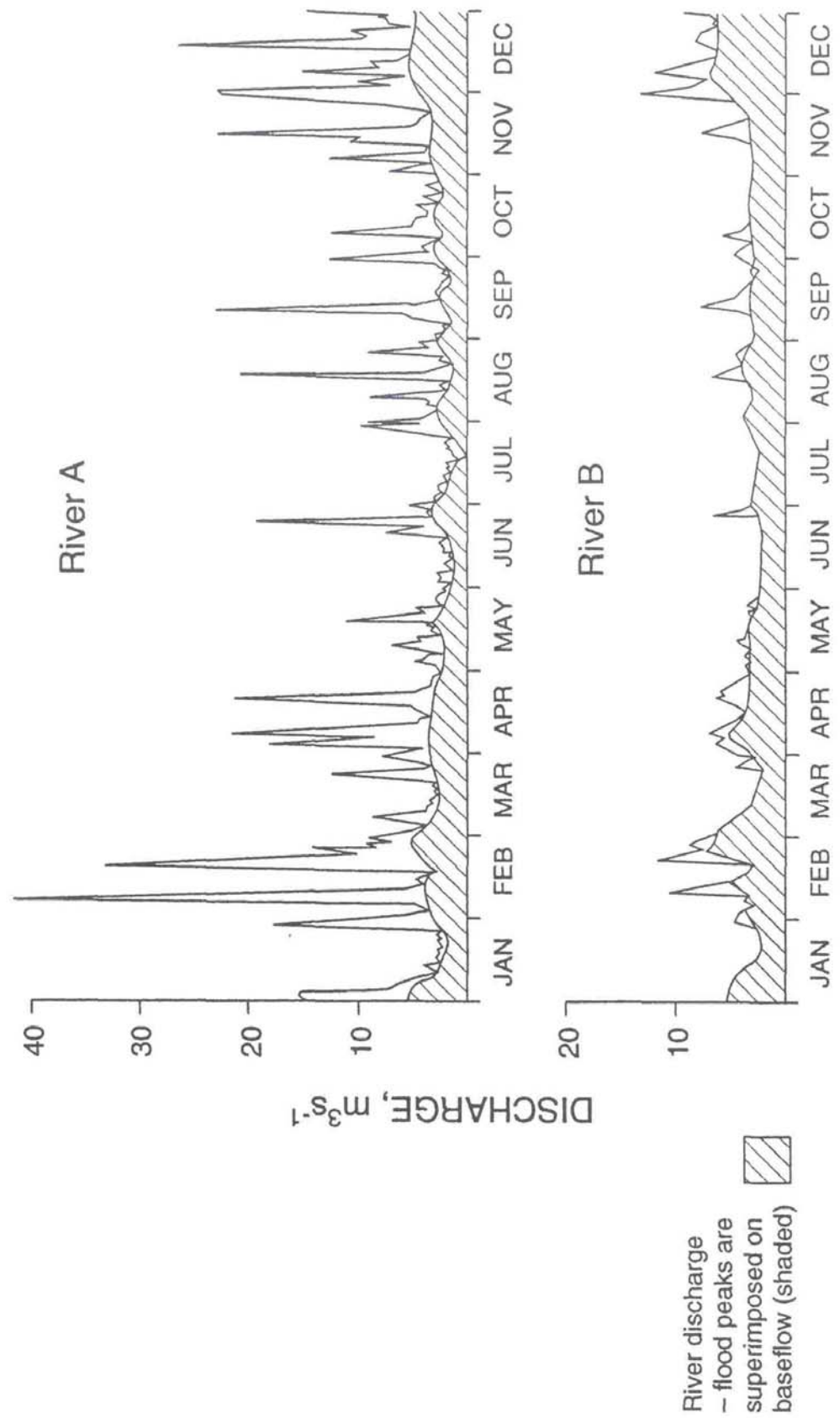


Figure 3 for Question 3 OR
The transformation of the city of Lawrence, State of Kansas, USA



Figure 4 for Question 4 EITHER

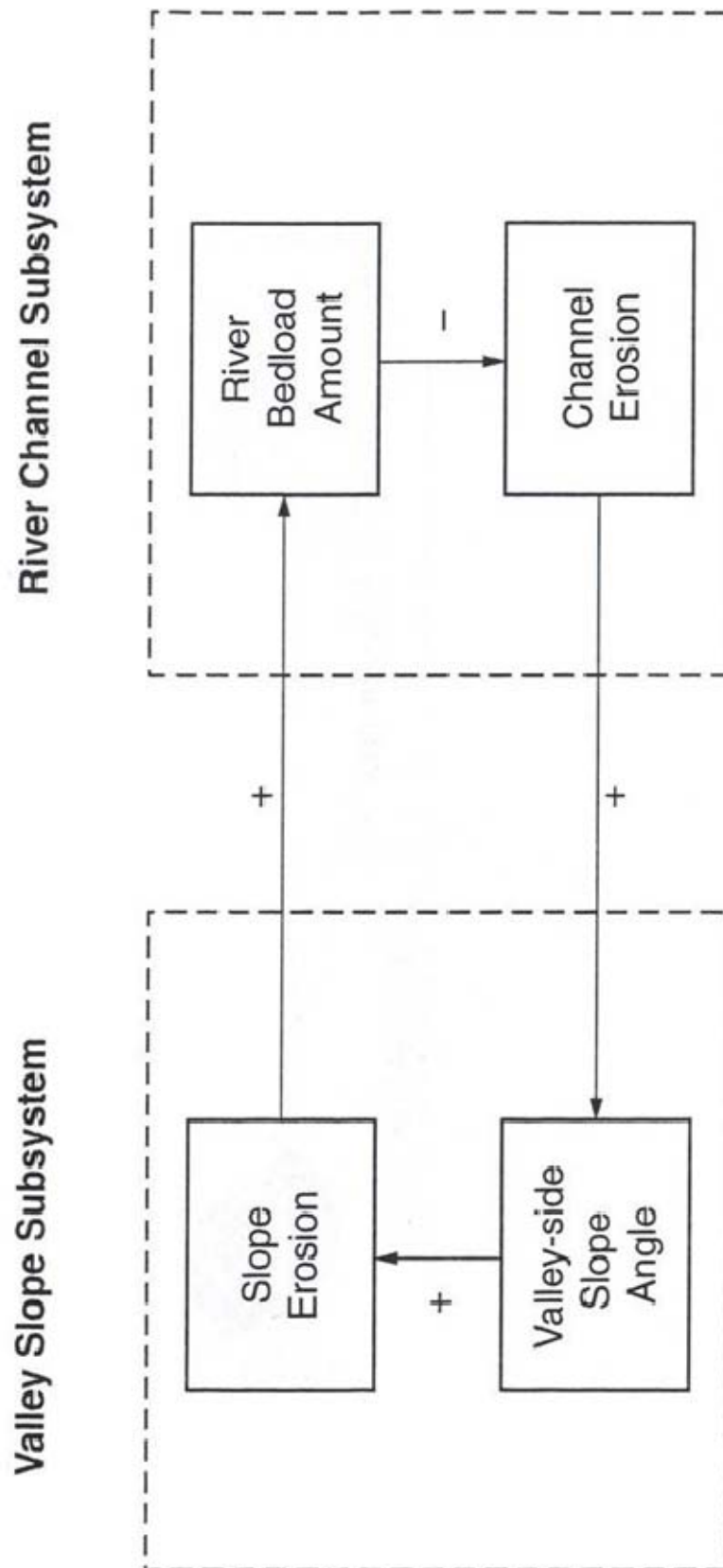
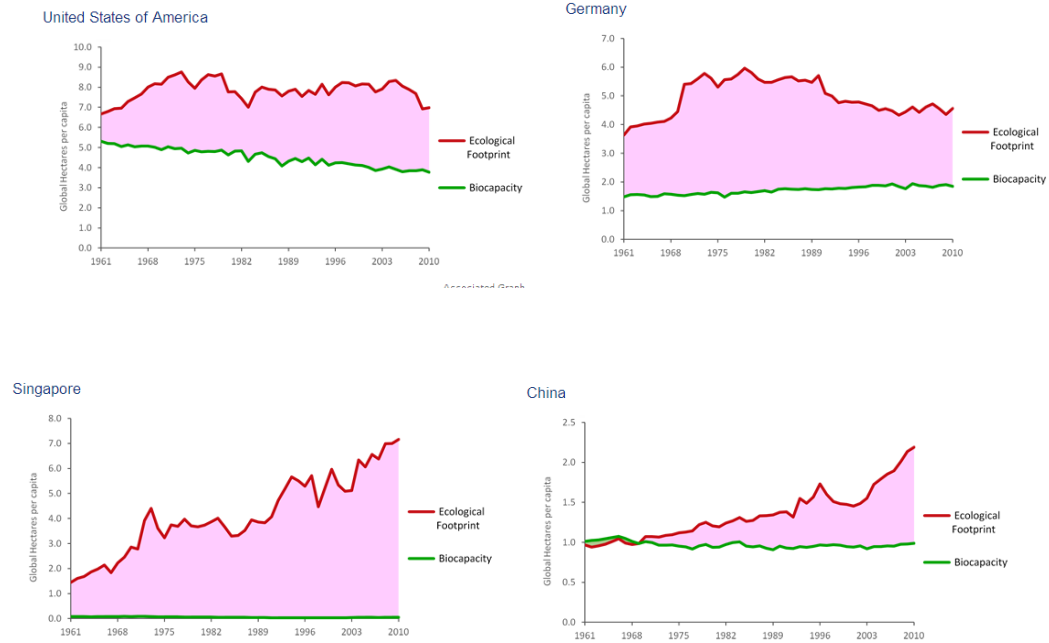


Figure 4 for Question 4 OR



 END
