

PIONEER JC
PRELIMINARY EXAMINATION



GEOGRAPHY
Higher 1

8812/01

INSERT 1

3 hours

READ THESE INSTRUCTIONS FIRST

This Insert contains all the Photographs referred to in the questions.

This document consists of **7** printed pages.

Fig. 1A, 1B and 1C for Question 1



Fig. 1A

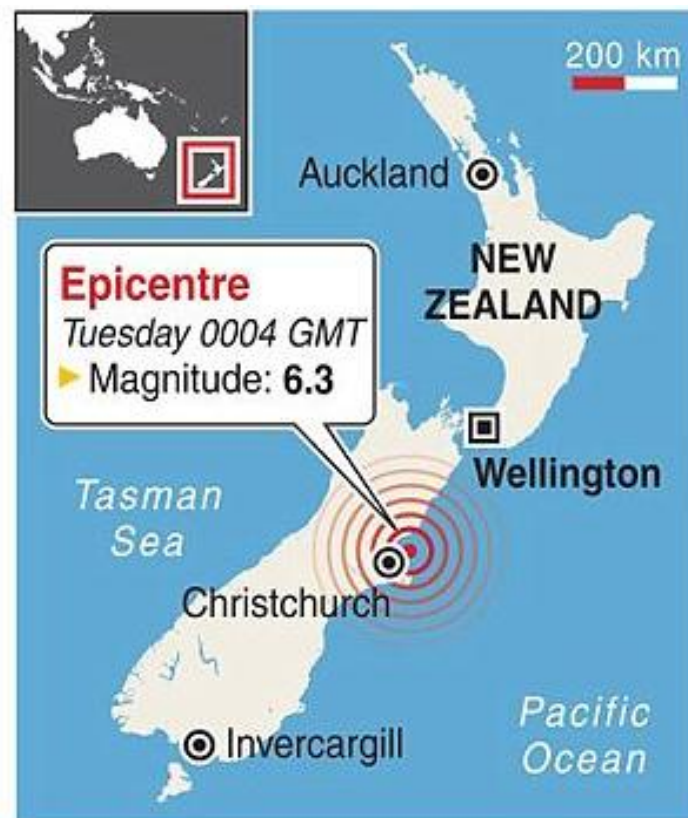


Fig. 1B

Fig. 1C

**Key**

- Suburbs
- Buildings

CTV is the Canterbury Television Building that is six-storey high. It collapsed during the earthquake due to poor building code. It was estimated that 115 people died in the CTV.

Fig. 2 for Question 2

Triangular graph showing employment structure of 6 countries

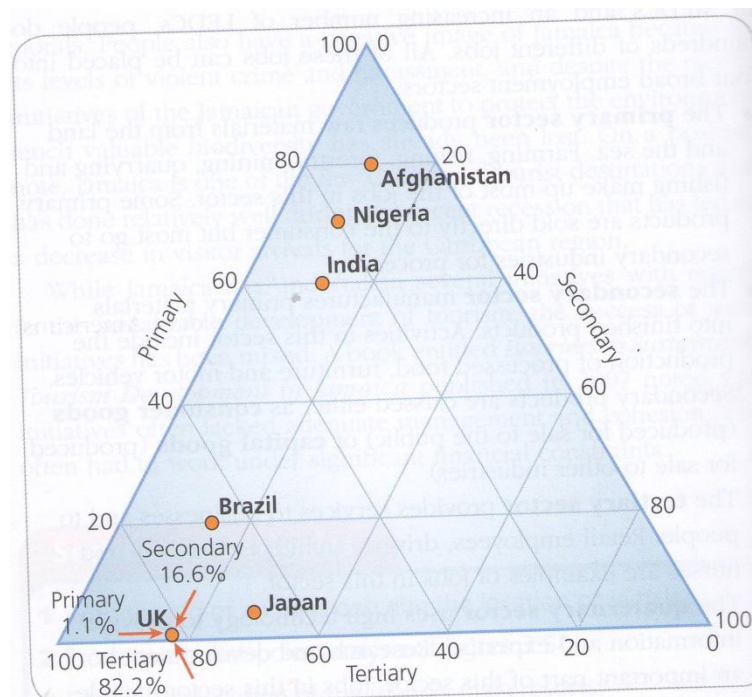


Fig. 3A and 3B for Question 3 Either

Storm hydrographs for two drainage basins

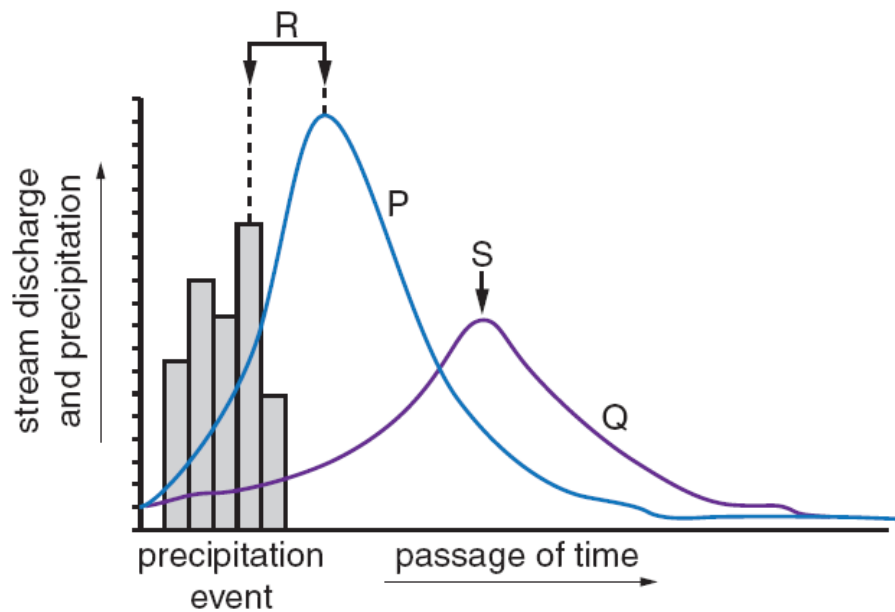


Fig. 3A

Precipitation pathways in two drainage basins

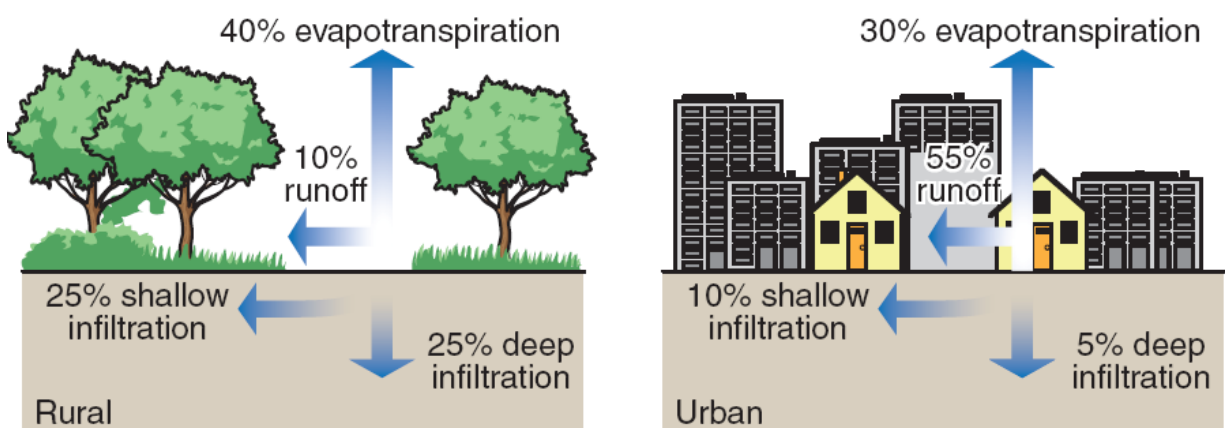


Fig. 3B

Fig. 4 for Question 3 Or

Percentage of households without a car or van in London

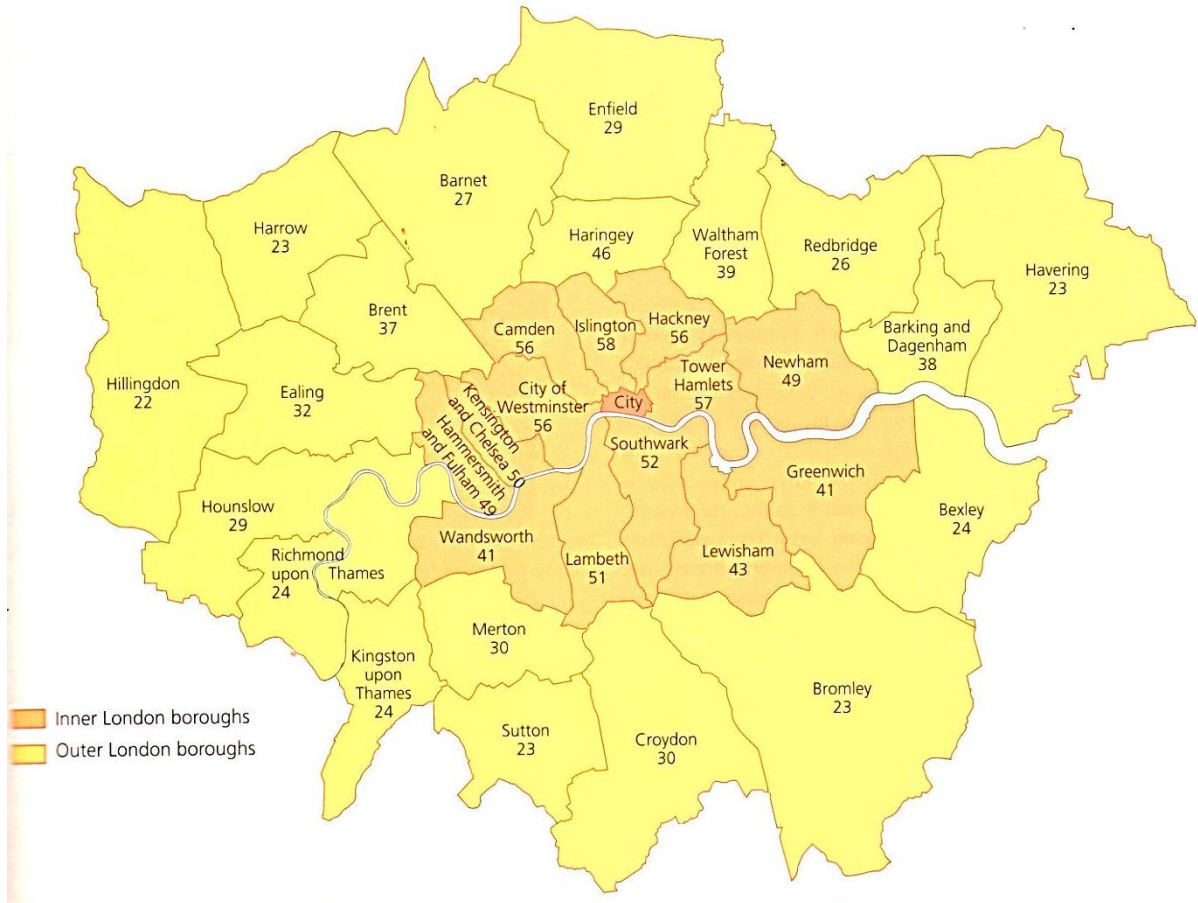


Fig. 5A and 5B for Question 4 Either

Annual hydrograph of the Columbia River in Canada

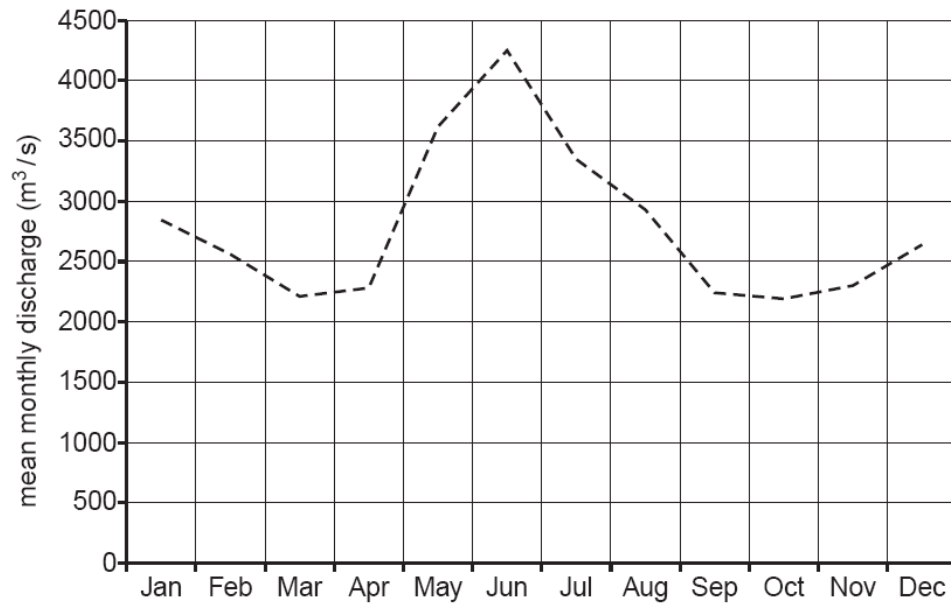


Fig. 5A

A rock cliff (free face) marked X and a debris slope (scree) marked Y

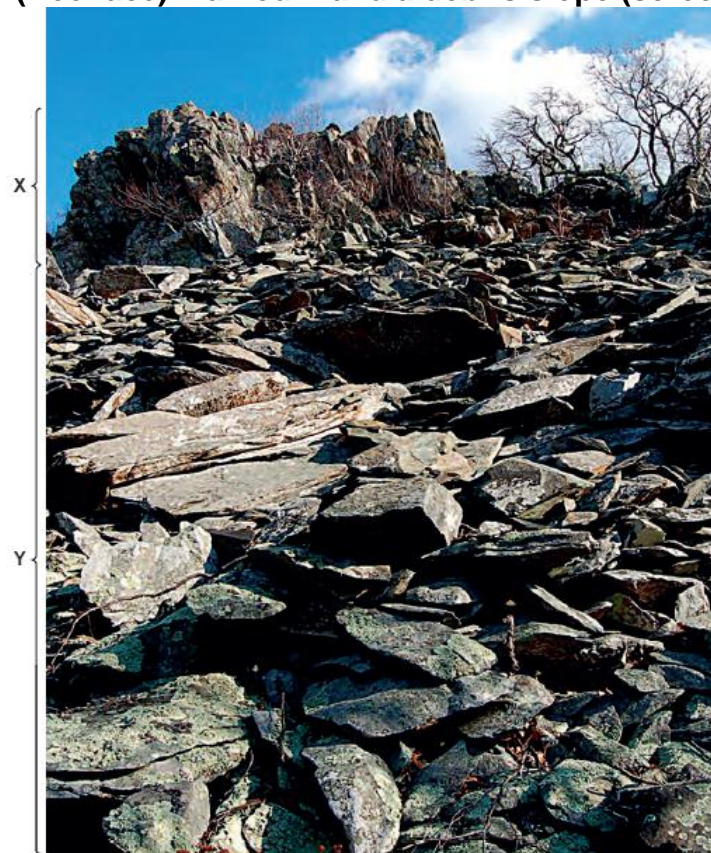


Fig. 5B

Fig. 6 for Question 4 Or

Most globalised countries according to AT Kearney Globalisation Index 2007