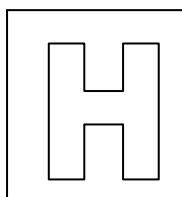


Candidate Name: _____

Class

Adm No

--	--



2014 Promotional Examination
Pre-university 2

GEOGRAPHY (HIGHER 1)

8812

INSERT

15 September 2014

3 hours

INSTRUCTIONS TO CANDIDATES

This insert contains all the Figures and Photograph referred to in the question paper.

This insert consists of 8 printed pages.

[Turn over

Photograph A for Question 1
A granitic landform in North Carolina, United States of America



Fig. 1 for Question 2
Comparison of GDP per capita across different nations of the World

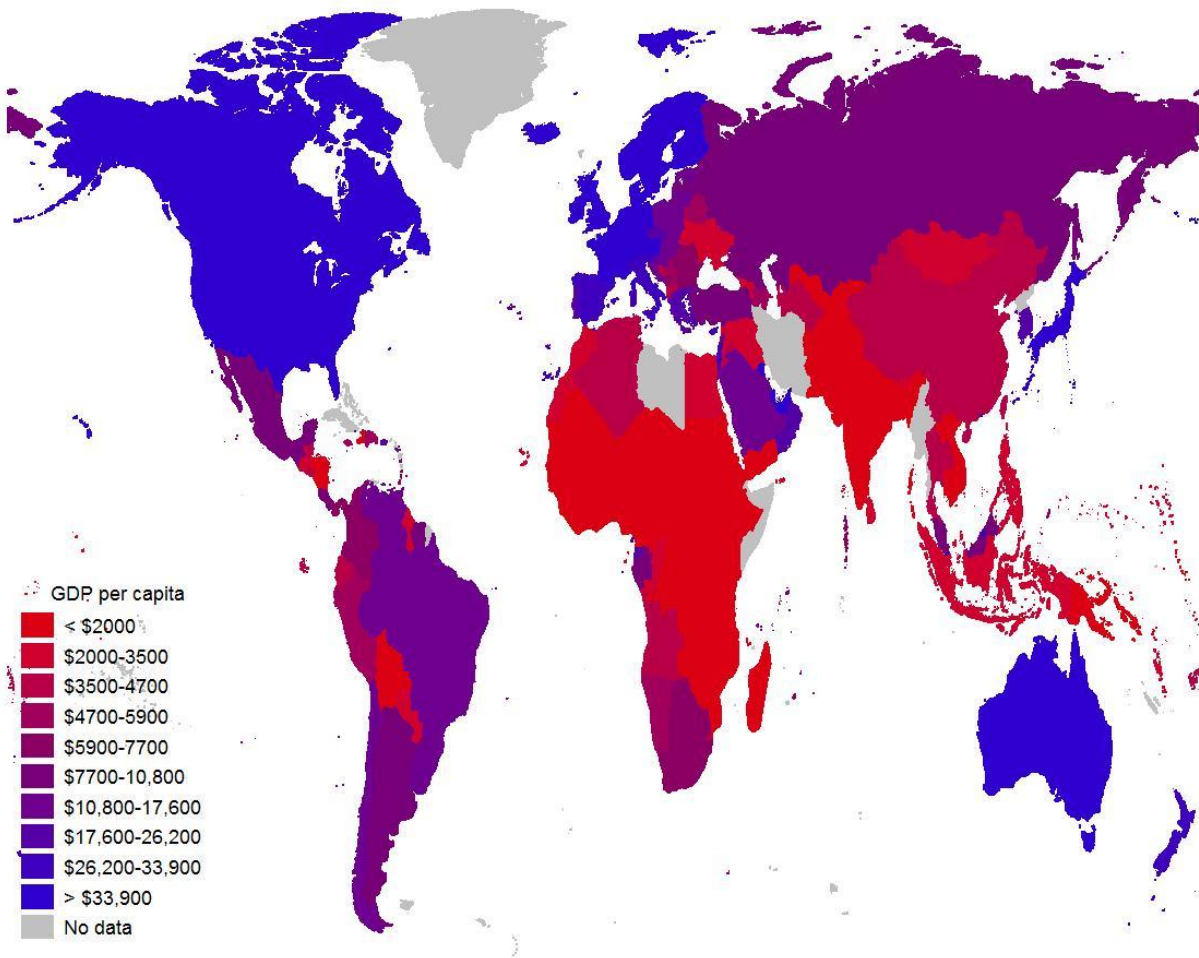


Fig. 2 for Question 3 Either

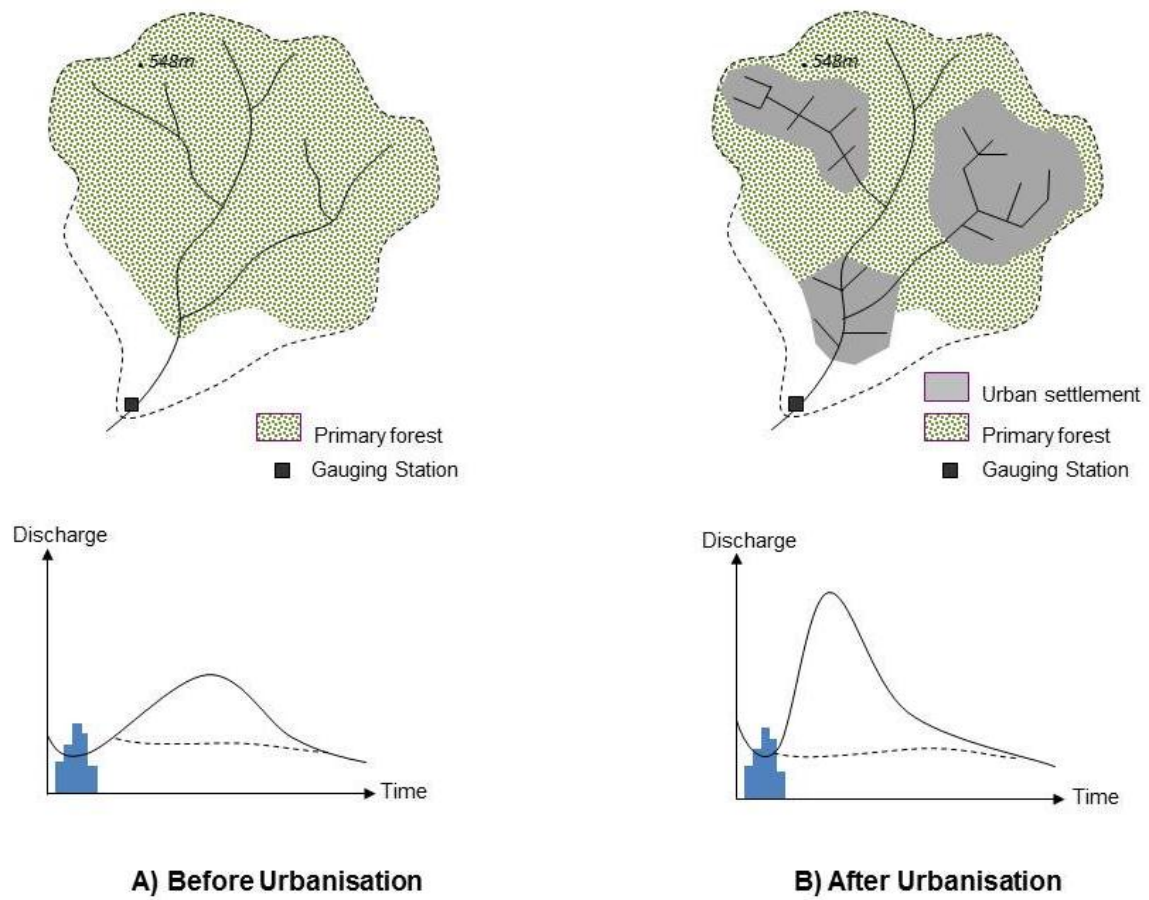


Fig. 3 for Question 3 OR
Actual and expected growth of megacities from 1975 to 2025

<i>Urban agglomeration</i>	<i>Population (millions)</i>			<i>Average annual rate of change (percentage)</i>	
	<i>1975</i>	<i>2007</i>	<i>2025</i>	<i>1975-2007</i>	<i>2007-2025</i>
Tokyo, Japan	26.6	35.7	36.4	0.92	0.11
New York-Newark, USA	15.9	19.0	20.6	0.57	0.44
Ciudad de México (Mexico City), Mexico	10.7	19.0	21.0	1.80	0.55
Mumbai (Bombay), India	7.1	19.0	26.4	3.08	1.83
São Paulo, Brazil	9.6	18.8	21.4	2.10	0.71
Delhi, India	4.4	15.9	22.5	4.00	1.92
Shanghai, China	7.3	15.0	19.4	2.24	1.44
Kolkata (Calcutta), India	7.9	14.8	20.6	1.96	1.83
Dhaka, Bangladesh	2.2	13.5	22.0	5.64	2.72
Buenos Aires, Argentina	8.7	12.8	13.8	1.19	0.41
Los Angeles-Long Beach-Santa Ana, USA	8.9	12.5	13.7	1.05	0.50
Karachi, Pakistan	4.0	12.1	19.1	3.48	2.52
Al-Qahirah (Cairo), Egypt	6.4	11.9	15.6	1.91	1.49
Rio de Janeiro, Brazil	7.6	11.7	13.4	1.38	0.74
Osaka-Kobe, Japan	9.8	11.3	11.4	0.43	0.04
Beijing, China	6.0	11.1	14.5	1.91	1.50
Manila, Philippines	5.0	11.1	14.8	2.49	1.60
Moskva (Moscow), Russian Federation	7.6	10.5	10.5	0.99	0.04
Istanbul, Turkey	3.6	10.1	12.1	3.21	1.03

NOTE: Urban agglomerations are ordered according to their population size in 2007.

Fig. 4 for Question 4 EITHER

Topographical Map of Area X (Latitude 0.4°N)

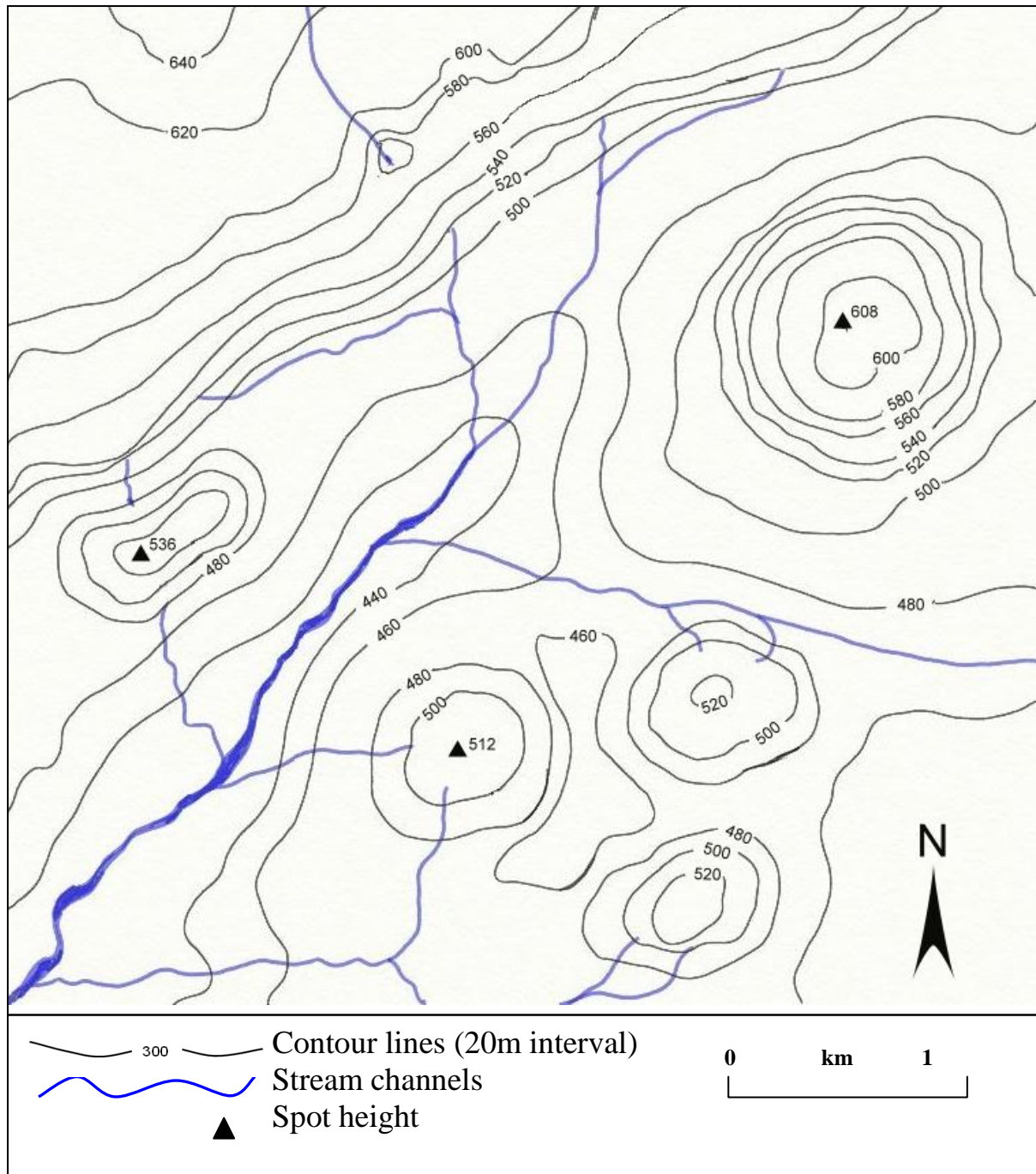


Fig. 5 for Question 4 OR
A generalised model of urban land use in the Southeast Asian City

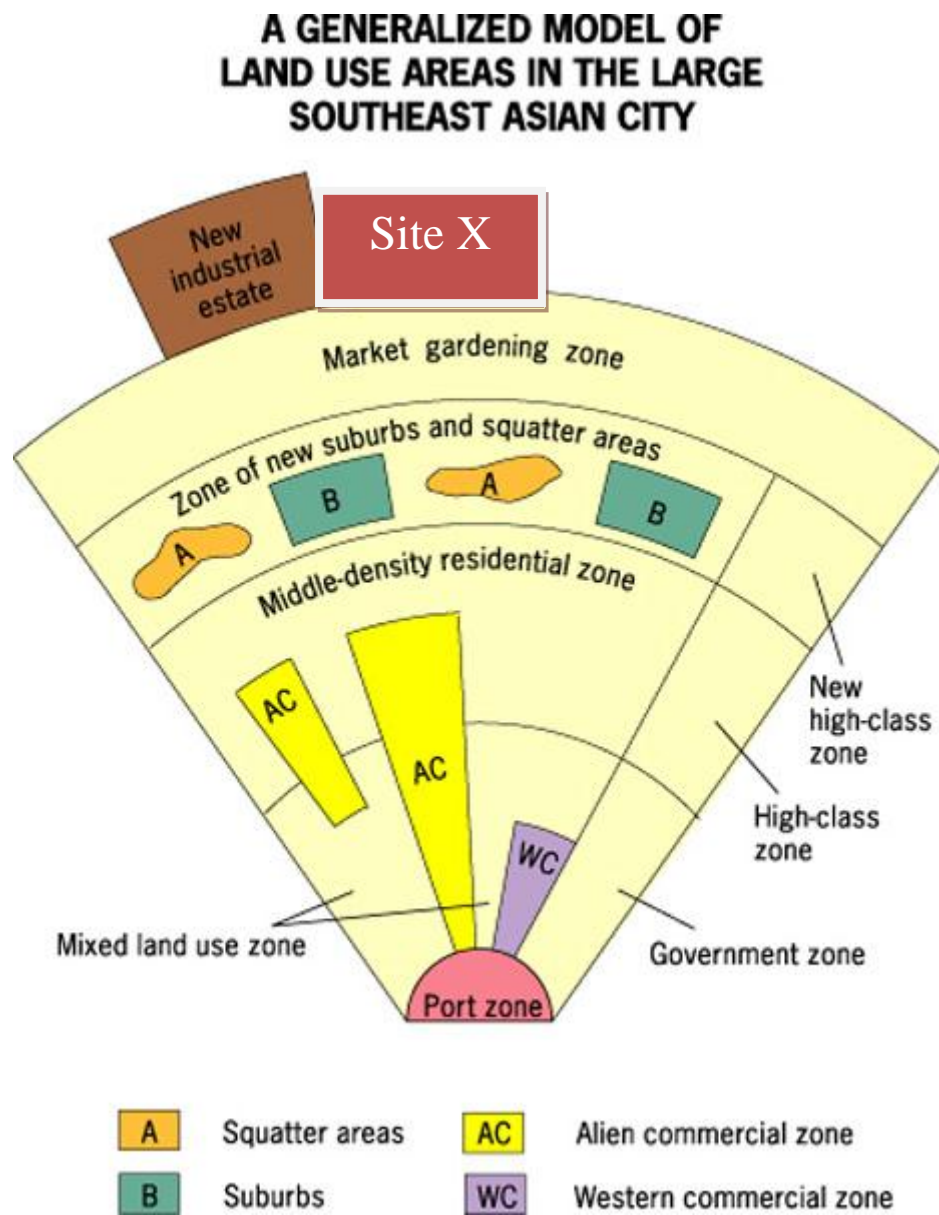


Fig. 6 for Question 4 OR
Possible development proposals for Site X

Proposal 1	Proposal 2
Flagship retail project	Theme Park / Leisure Park
<ul style="list-style-type: none"> • Mega shopping mall • On-site car park • Food outlets 	<ul style="list-style-type: none"> • Integrated resort with theme park facilities. • Green open space with landscaping • Outdoor play areas. • Food outlet and cafes.

Copyright Acknowledgements:

Question 1 Fig. 1	
Question 2 Fig. 2	http://www.koreaherald.com/view.php?ud=20140818000668 (Last accessed 18 Aug 2014)
Question 3(EITHER) Fig. 3	© David Toh @ MI
Question 3(OR) Fig. 4	http://iph-partnership.org/index.php?title=Image:Megacities_growth.JPG (Last accessed 18 Aug 2014)
Question 4(EITHER) Fig. 5	© David Toh @ MI
Question 4(OR) Fig. 6	http://lewishistoricalsociety.com/wiki2011/tiki-read_article.php?articleId=90 (Last accessed 18 Aug 2014)
