



**SERANGOON JUNIOR COLLEGE**  
**JC2 PRELIMINARY EXAMINATIONS 2014**  
**Higher 2**

---

**GEOGRAPHY**

**9730/01**

Paper 1 Physical Geography  
INSERT

**Wednesday**  
**20 Aug 2014**  
**3 hours**

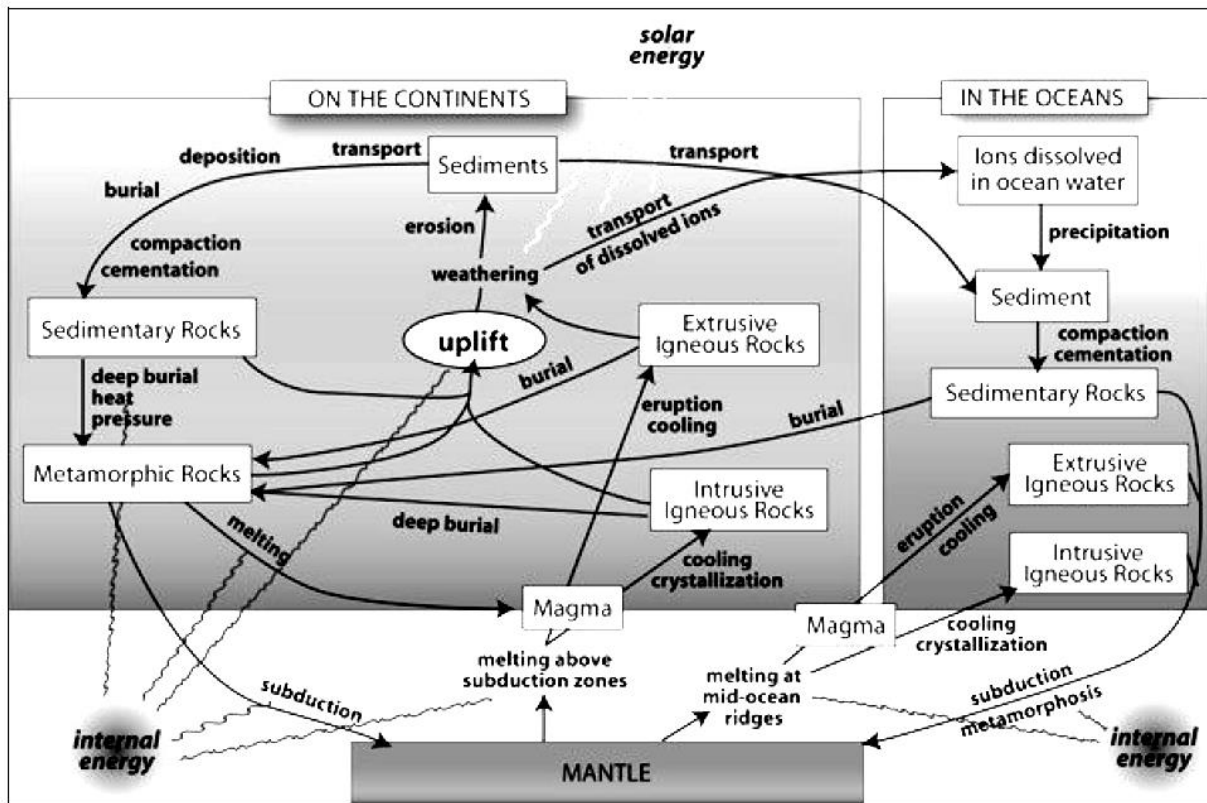
---

**READ THESE INSTRUCTIONS FIRST**

This insert contains all the Figures referred to in the question paper.

Fig. 1 for Question 1

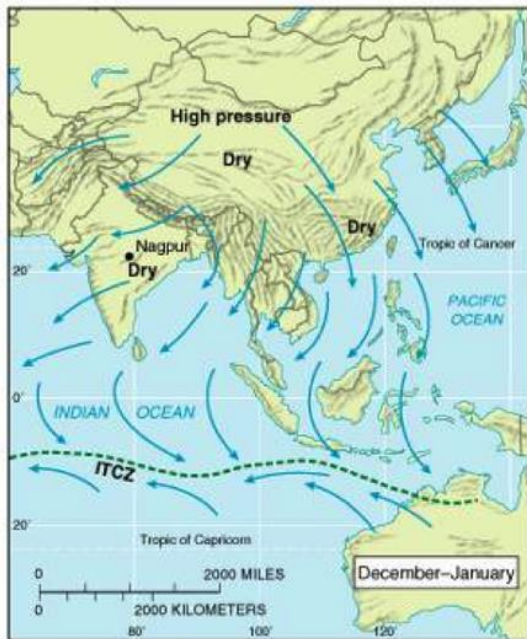
Fig. 1 Rock Cycle



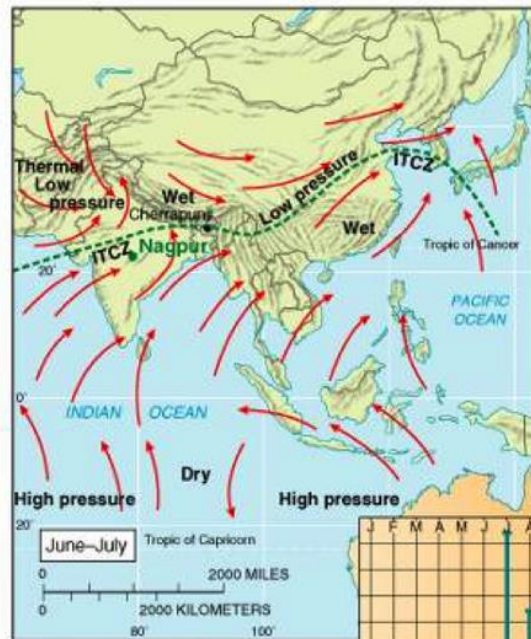
Source: <http://www.visionlearning.com/en/library/Earth-Science/6/The-Rock-Cycle/128>

**Figs 2A, 2B and 2C for Question 2**

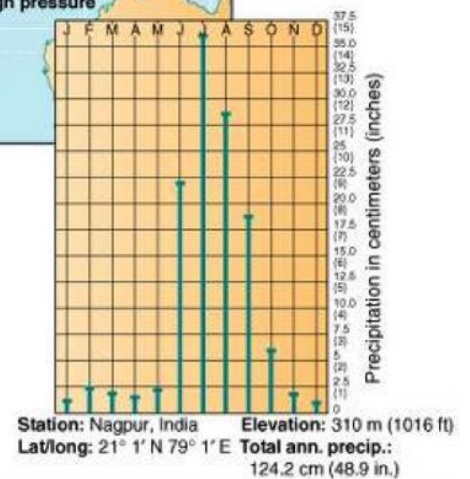
**Figs 2A, 2B and 2C Monsoon wind system and climograph of Nagpur, India**



**Fig. 2A** Winter monsoon



**Fig. 2B**  
Summer monsoon



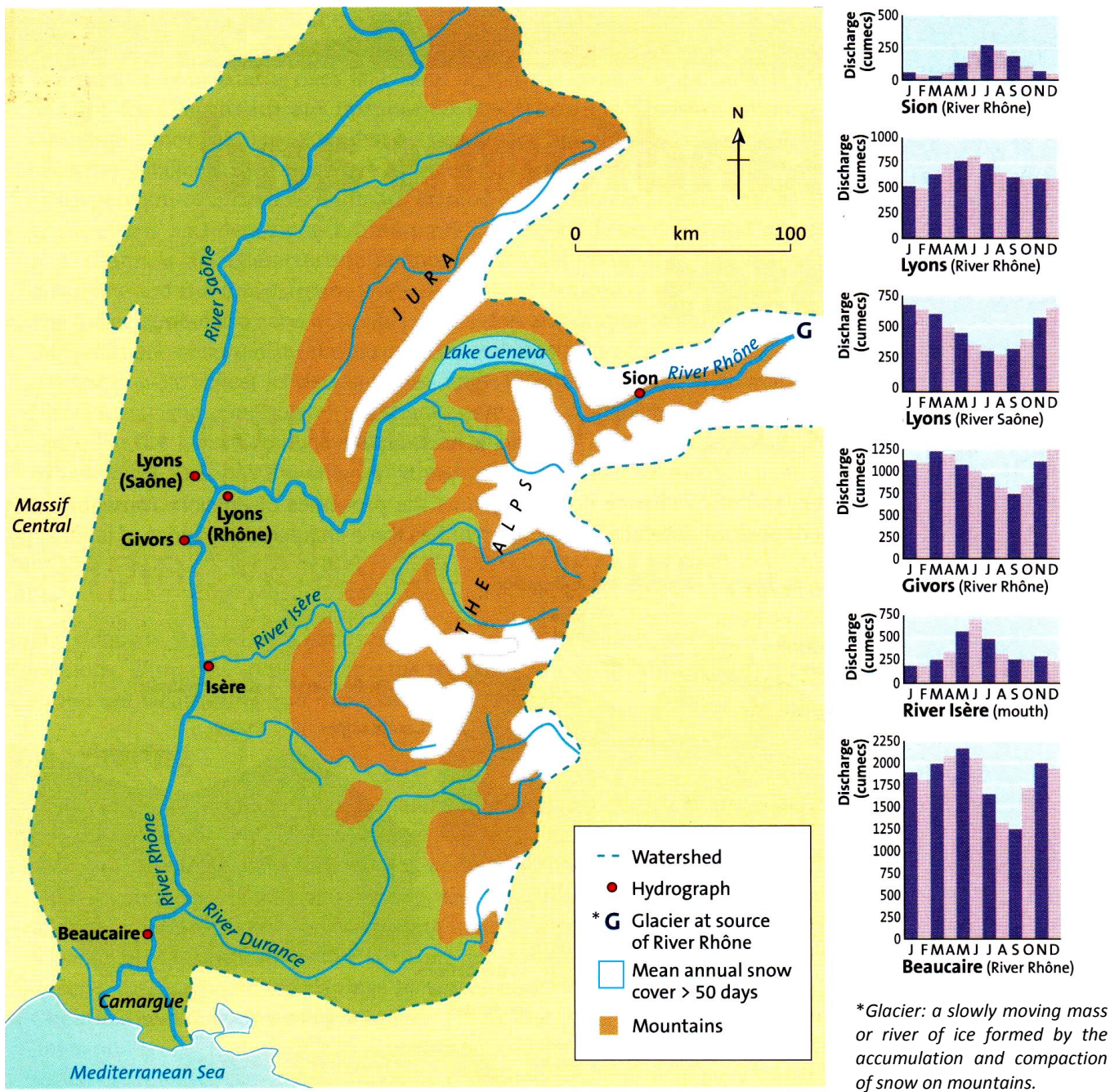
**Fig. 2C**  
Climograph of Nagpur, India

Source: <http://thebritishgeographer.weebly.com/the-climate-of-tropical-regions.html>



Fig. 3 for Question 3

Fig. 3 River Rhone catchment

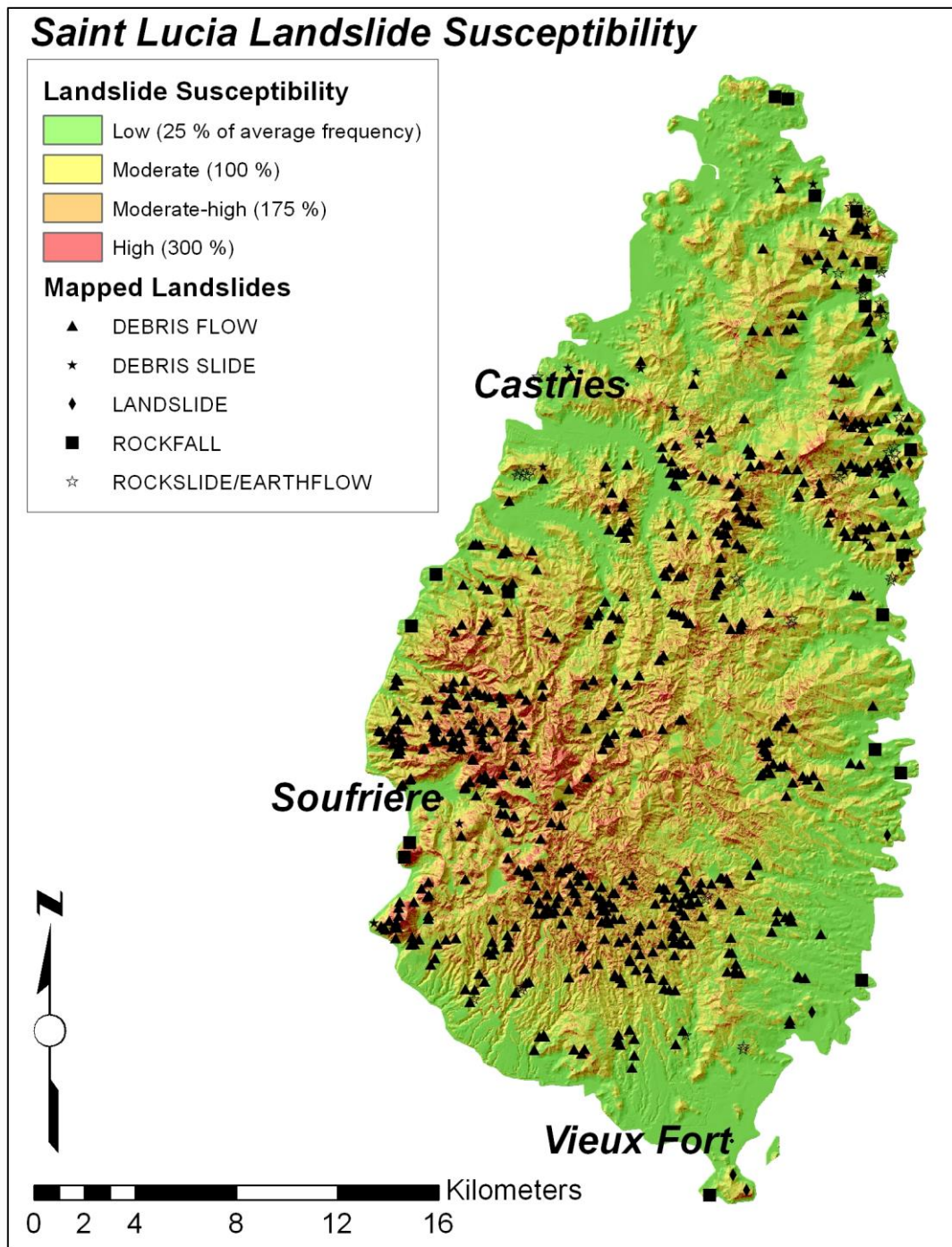


Source: Rivers &amp; Coasts (Bob Horden), pg. 9



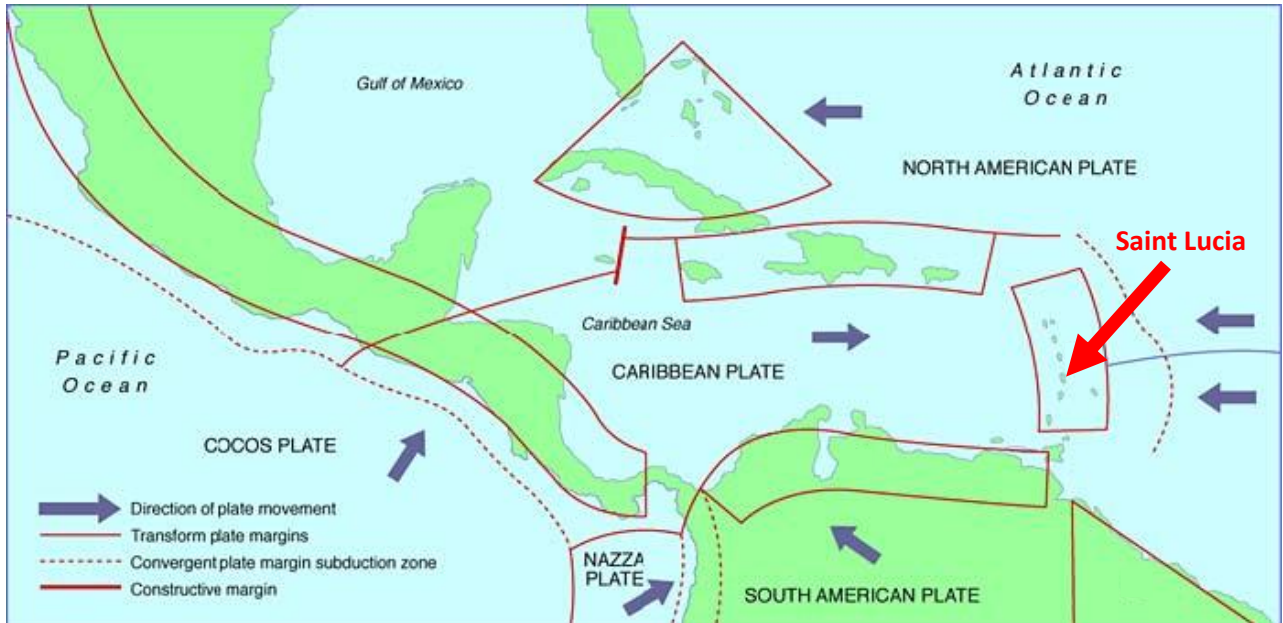
## Figs 4A and 4B for Question 4

Fig. 4A Saint Lucia Landslide Susceptibility map



Source: <http://petequinnramblings.wordpress.com/2012/04/02/landslide-susceptibility-and-risk-in-saint-lucia-draft-paper/>

**Fig. 4B** Location and tectonic setting of Saint Lucia



**End of Insert**