



SERANGOON JUNIOR COLLEGE
JC2 PRELIMINARY EXAMINATIONS 2014
Higher 1

GEOGRAPHY

8812/01

INSERT

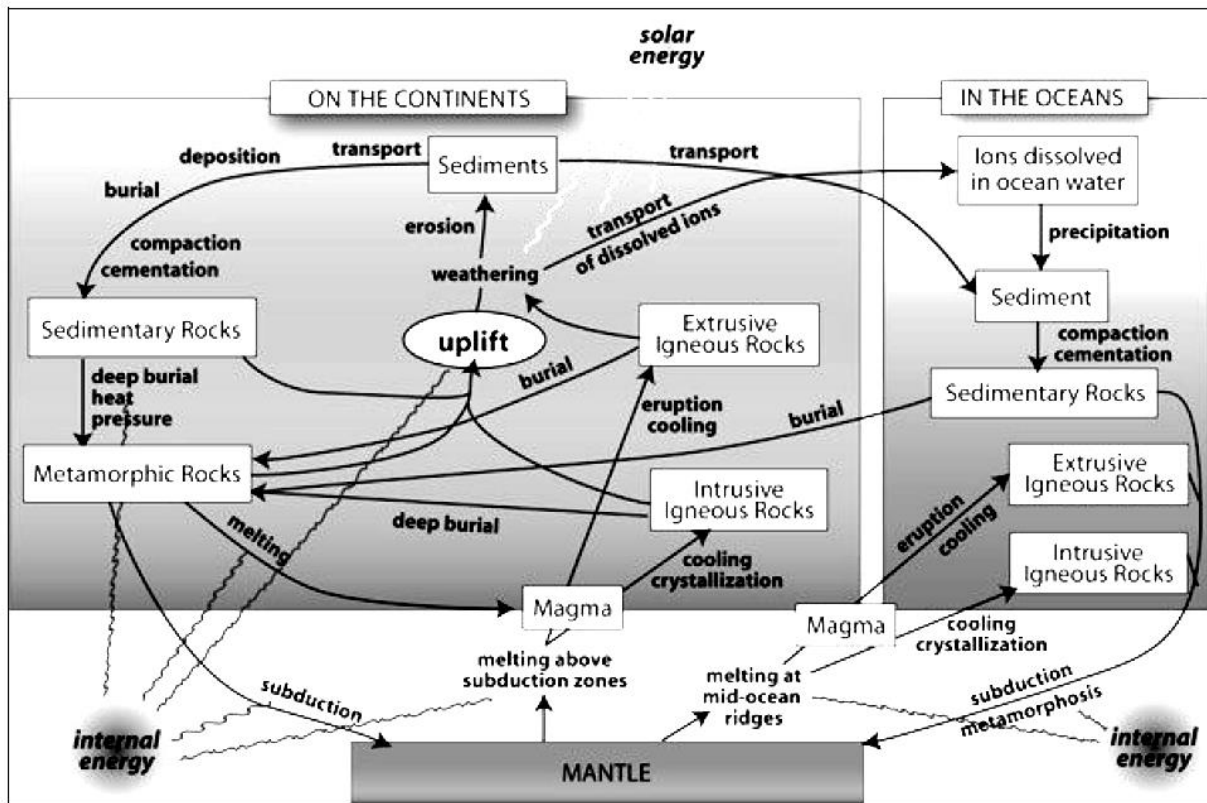
Wednesday
20 Aug 2014
3 hours

READ THESE INSTRUCTIONS FIRST

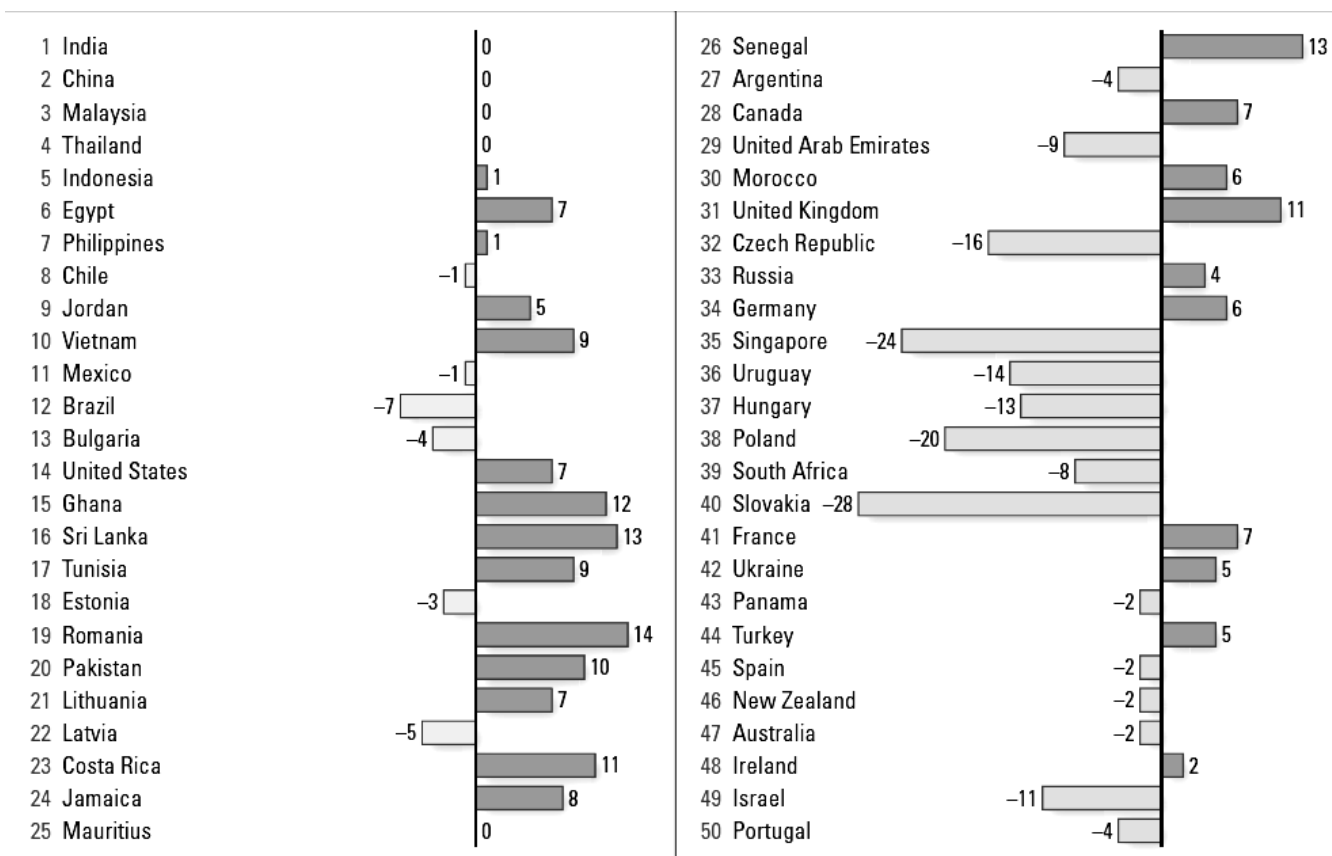
This insert contains all the Figures referred to in the question paper.

Fig. 1 for Question 1

Fig. 1 Rock Cycle



Source : <http://www.visionlearning.com/en/library/Earth-Science/6/The-Rock-Cycle/128>

Fig. 2 for Question 2**Fig. 2** Changes in rankings of Global Services Location Index (GSLI) for selected countries from 2007 to 2009

The Global Services Location Index (GSLI), first established in 2004, analyses and ranks the top 50 countries worldwide as the best destinations for providing outsourcing activities, including IT services and support, contact centres and back-office support.

**Source: The Shifting Geography of Offshoring –
The 2009 A.T. Kearney Global Services Location Index**
<http://www.atkearney.com/documents/10192/fda82529-b60a-4fae-8d92-22cfd69b95b3>

Fig. 3 for Question 3E

Fig. 3 River Rhone catchment

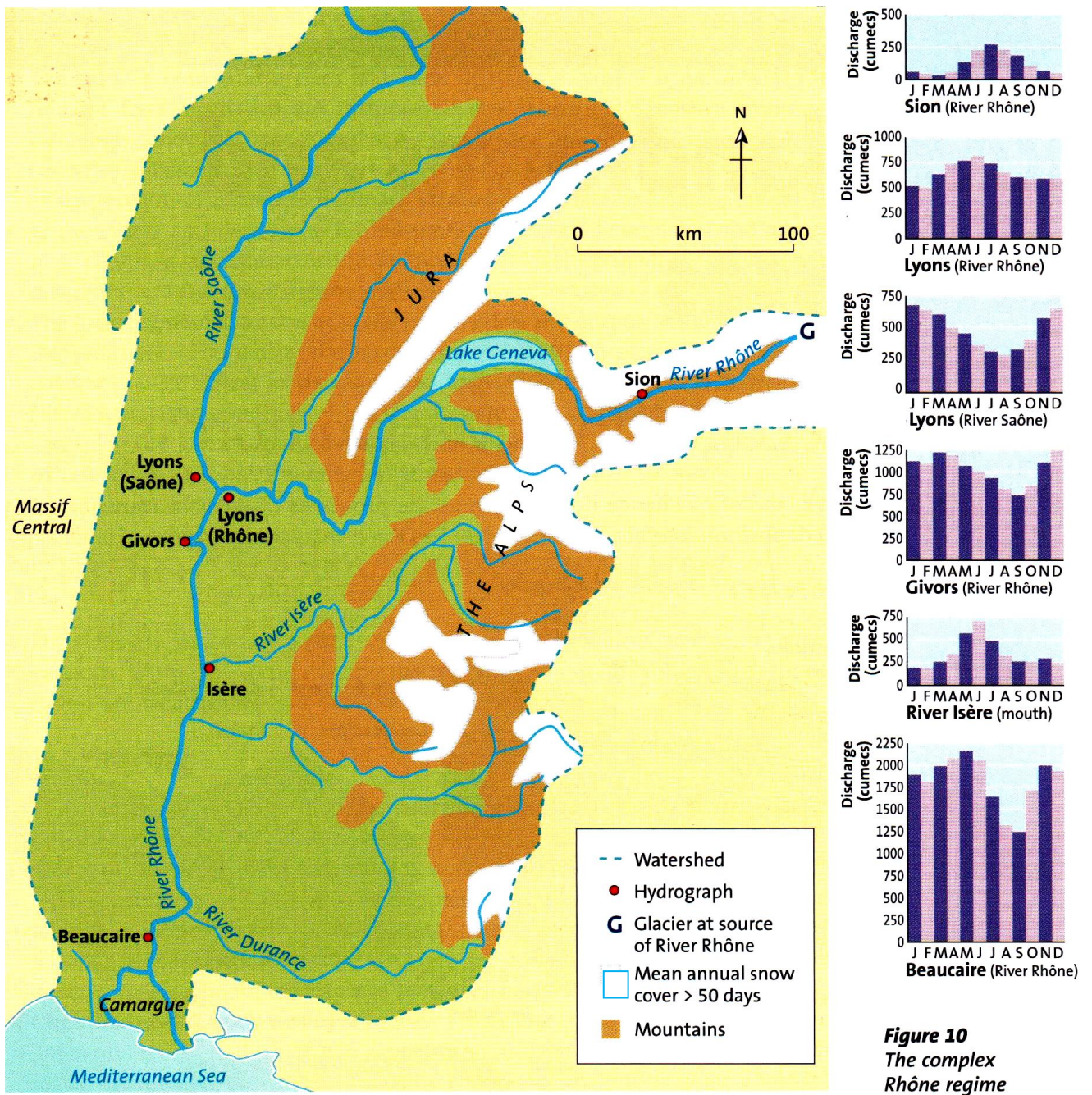


Figure 10
The complex
Rhône regime

Source: Rivers & Coasts (Bob Horden), pg. 9

Photograph A and Fig. 4 for Question 3Or

Photograph A Section of Camden City, UK



Fig. 4 Poverty Profile for Camden City (2013)

	Low income, work & pay				Inequality			Housing				Health				Education			Benefit reforms			Av.	Change*
	1	2	3	4	5	6	7	8	9	10	11	12	13	14	15	16	17	18	19	20	21		
Camden																							

Key

- Worst 4 boroughs
- Next 4 boroughs
- Next 8 boroughs
- Remaining 8 boroughs

Change – relative to rest of London

- Worse
- Slightly worse
- No change
- Slightly better
- Better

- 1 Child poverty
- 2 Unemployment
- 3 Low paid jobs by place of work
- 4 Low pay by residence
- 5 Pay inequality
- 6 Benefit polarisation

- 7 Inequality in life expectancy
- 8 Overcrowding
- 9 Temporary accommodation
- 10 Landlord repossessions
- 11 Mortgage repossessions
- 12 Childhood obesity
- 13 Underage pregnancies

- 14 Limiting long-term illness
- 15 Premature mortality
- 16 Schools at/above capacity
- 17 GCSE achievement
- 18 Lacking qualifications at 19
- 19 Out of work benefits
- 20 LHA claims

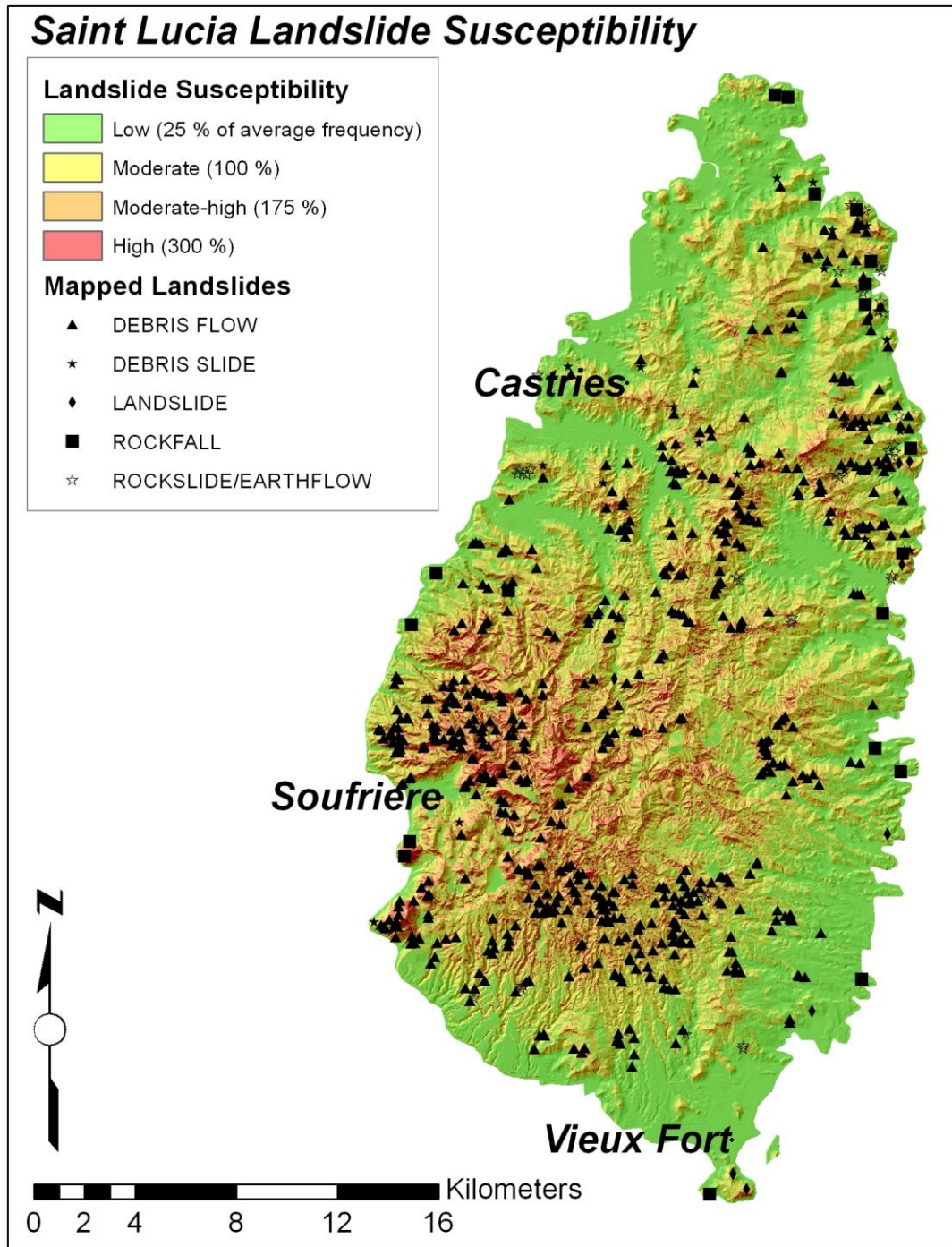
- 21 Council Tax Support cut

*Change: reflects only indicators 1, 2, 4, 15 and 17

Source : <http://www.londonpovertyprofile.org.uk/key-facts/overview-of-london-boroughs/>

Figs 5A and 5B for Question 4E

Fig. 5A Saint Lucia Landslide Susceptibility map



Source : <http://petequinnramblings.wordpress.com/2012/04/02/landslide-susceptibility-and-risk-in-saint-lucia-draft-paper/>

Fig. 5B Location and tectonic setting of Saint Lucia

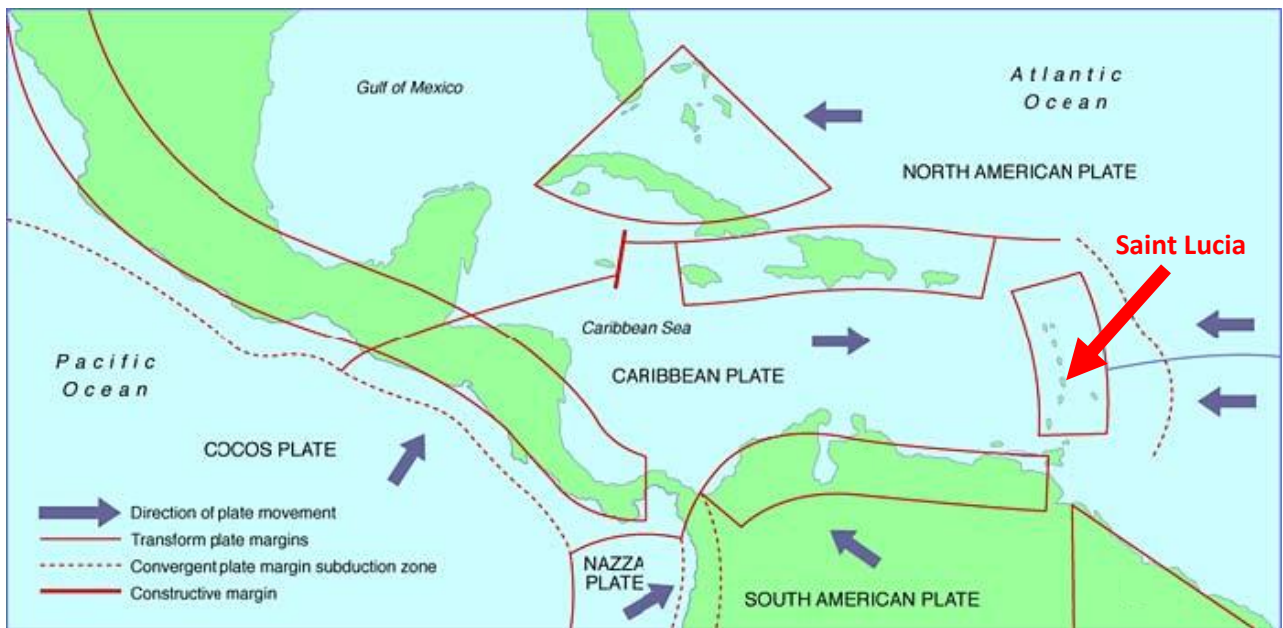
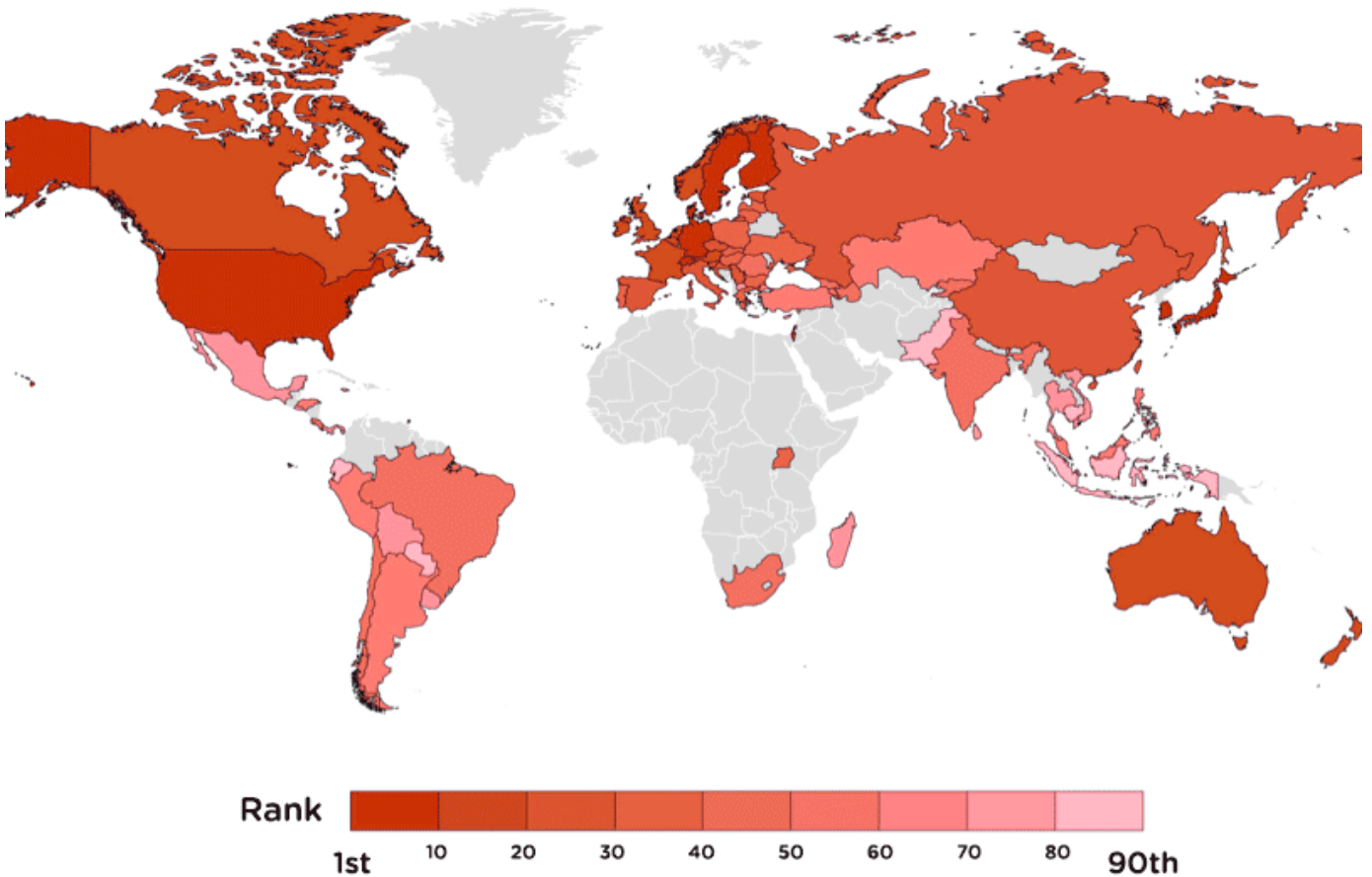


Fig. 6 for Question 4Or**Fig. 6 Global Technology Map (2014)**

The Global Technology map is based on the Global Technology Index which employs three key technology metrics :

- *Global Research & Development Investment Index (R&D spending as a per cent of GDP. R&D spending here refers to spending by both public and private corporations.)*
- *Global Researchers Index (the number of professionals engaged in R&D, controlling for population)*
- *Global Innovation Index (patents per capita).*

Source : <http://quarterly.demos.co.uk/article/issue-1/europe-in-the-creative-age-revisited-7/>

End of Insert