



HWA CHONG INSTITUTION
C2 Preliminary Examinations
Higher 3

**CANDIDATE
NAME**

--

CT GROUP

13S

**CENTRE
NUMBER**

--	--	--	--

**INDEX
NUMBER**

--	--	--	--

PHARMACEUTICAL CHEMISTRY

9812/01

Paper 1

25 September 2014

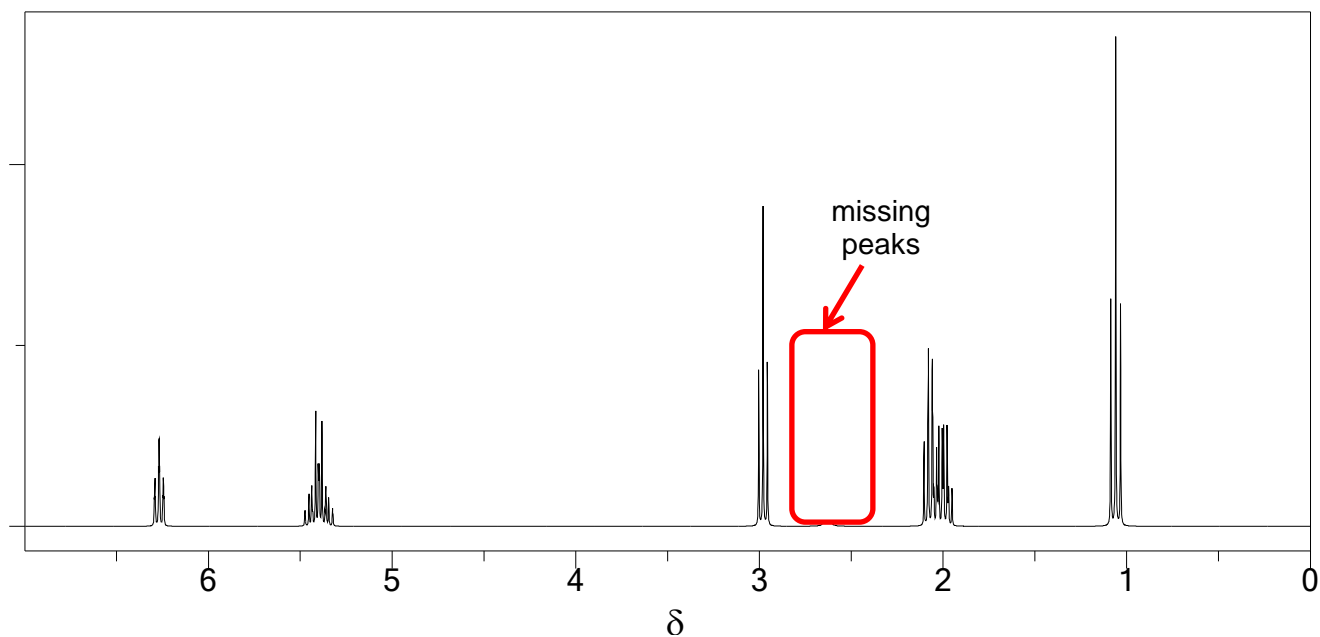
INSERT

2 hours 30 minutes

READ THESE INSTRUCTIONS FIRST

This Insert provides the spectra required in question 3(c)(iv),(v).

You are reminded to fasten the Insert together with the rest of your answers if question 3 is attempted.

NMR spectrum of compound **S**

δ / ppm	Multiplicity	Integral	Deduction
6.27		1	
5.40	multiplet	2	
2.98		2	
2.63			
2.00	2 overlapping multiplets	4	
1.06		3	

IR spectrum of compound **S**