

Candidate Name: \_\_\_\_\_

CT Group : \_\_\_\_\_

Index no. : \_\_\_\_\_

**PIONEER JUNIOR COLLEGE**  
**JC 2 PRELIMINARY EXAMINATIONS 2014**  
Collaboration with TJC



**ART**

Higher 2

Higher 1

**9750/01**

**8879/01**

Paper 1: Study of Visual Arts

**22 September 2014**

**1400-1700hr**

**Time: 3 hours**

**Instructions to candidates:**

1. Write your full name, CT group and question numbers on all papers handed in.
2. Write in dark blue or black pen.
3. You may use diagrams to support and clarify your answer.
4. Do not use staples, paper clips, highlighters, glue or correction fluid.
5. This paper consists of Section A, Section B & Section C.

**Answer 3 questions:**

All parts a-c of **one** from Section A.

All parts a-c of **one** from Section B.

**One** from Section C

6. At the end of the examination, fasten all papers securely together.

**Additional Materials:**

Refer to inserts for illustrations for Question 1 to 4.

Fig. 1 refers to Question 1.

Fig. 2 refers to Question 2.

Fig. 3a and Fig. 3b refers to Question 3.

Fig. 4a and Fig. 4b refers to Question 4.

This question paper consists of **11** printed pages and 1 blank page.

[Turn over]

## Section A: Structured Questions

Answer all three parts (a-c) of **one** question.

1.

***Massacre in Korea*** by Pablo Picasso, 1951 [Fig 1]

Oil on Plywood; 110 X 210cm

Musée National Picasso

- (a) Discuss how materials and techniques were used in this work. [10]
- (b) Comment on the artist's ideas as presented in this painting. [10]
- (c) Compare Picasso's approach to social commentary with respect to the work of another artist. [10]

**Total [30]**

2.

***Extinction Series: 19*** by Han Sai Por, 2009, [Fig 2]

Marble with Honed Finish. Tembusu Wood Blocks, Charcoal 400 x 400 x 30 cm

Nanyang Academy of Fine Arts

- (a) Discuss how the artist's ideas are visually presented in this work. [10]
- (b) Comment on the artist's materials and techniques. [10]
- (c) Compare this artwork to a work by another artist of your choice. [10]

**Total [30]**

[Turn Over]

## Section B: Structured Comparison Questions

Answer all three parts (a-c) of **one** question.

3.

***Lotus Pond Series: Morning Mist*** by Chua Ek Kay, 2004, [Fig. 3a]

128 x 145 cm, Ink and colour on rice paper

***RP5-W on Blue Waves*** by Anthony Poon, c. 1980s, [Fig. 3b]

190 x 190 cm, Acrylic on Canvas

- (a) Discuss how materials and techniques were employed to make these two works. [10]
- (b) Compare and contrast how these artists use line and colour in their works. [10]
- (c) In your opinion, which of these artworks is more successful as a work of art? [10]  
Why?

**Total [30]**

4.

***Alison Lapper Pregnant***, by Marc Quinn, 2005, [Fig. 4a, 4b & 4c]

Marble, 355h x 180.5w x 260d cms

***INSIDE AUSTRALIA*** by Antony Gormley, 2002 - 2003, [Fig. 4a, 4b & 4c]

51 Cast steel sculpture (alloy of 51 elements)

- (a) Assess the visual presentation of the works. [10]
- (b) Discuss the treatment of the human body in the works. [10]
- (c) Which of these two works is more successful as a work of sculpture? [10]

**Total [30]**

[Turn Over]

### Section C: Essay Question

Answer **one** question.

5. To what extent has the work of Paul Cezanne influenced the Singapore Pioneer Artists? Discuss in relation to the works of at least one of the Singaporean Pioneer Artists.

**Total [30]**

6. Discuss how two of the following artists have used performance art to convey their ideas.

Joseph Beuys  
Amanda Heng  
Tang Da Wu  
Mona Hatoum

**Total [30]**

Candidate Name: \_\_\_\_\_

CT Group : \_\_\_\_\_  
Index no. : \_\_\_\_\_

**PIONEER JUNIOR COLLEGE**  
**JC 2 PRELIMINARY EXAMINATIONS 2014**  
Collaboration with TJC



**ART**

Higher 2  
Higher 1

**9750/01**  
**8879/01**

Paper 1: Study of Visual Arts

**22 September 2014**

**1400-1700hr**

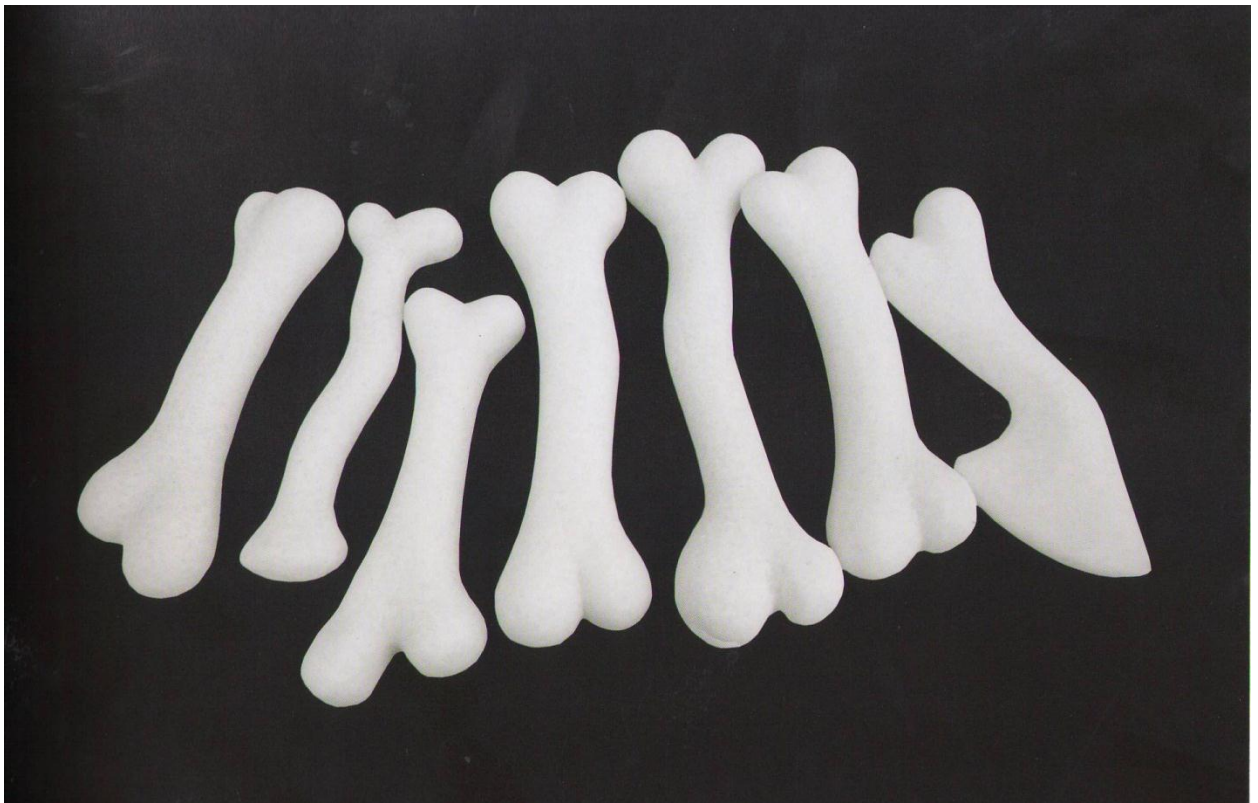
**Time: 3 hours**

**INSERTS**



[Fig 1.] ***Massacre in Korea*** by Pablo Picasso, 1951  
110 X 210cm; Oil on Plywood  
Musée National Picasso



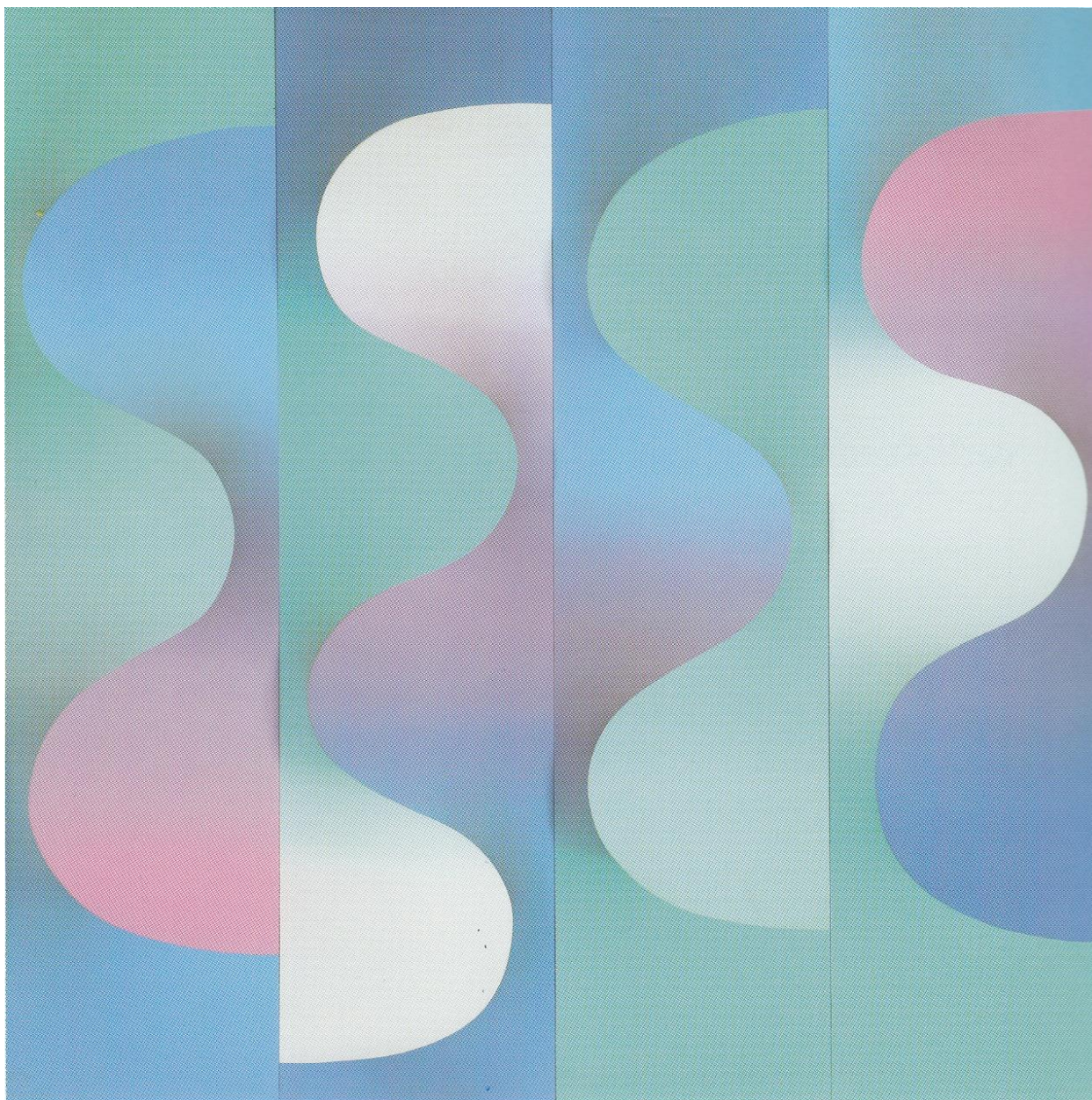


[Fig 2] ***Extinction Series: 19*** by Han Sai Por, 2009,  
400 x 400 x 30 cm; Marble with Honed Finish, Tembusu Wood Blocks, Charcoal  
Nanyang Academy of Fine Arts



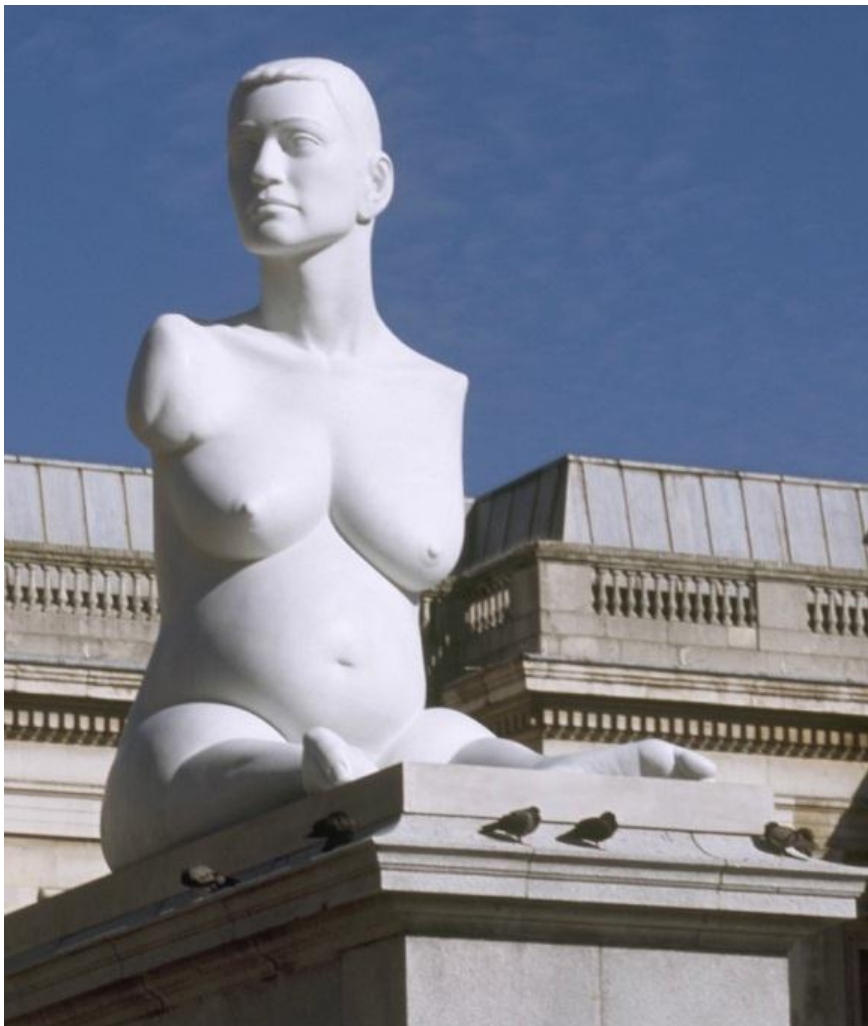
[Fig. 3a] ***Lotus Pond Series: Morning Mist*** by Chua Ek Kay, 2004,  
128 x 145 cm, Ink and colour on rice paper



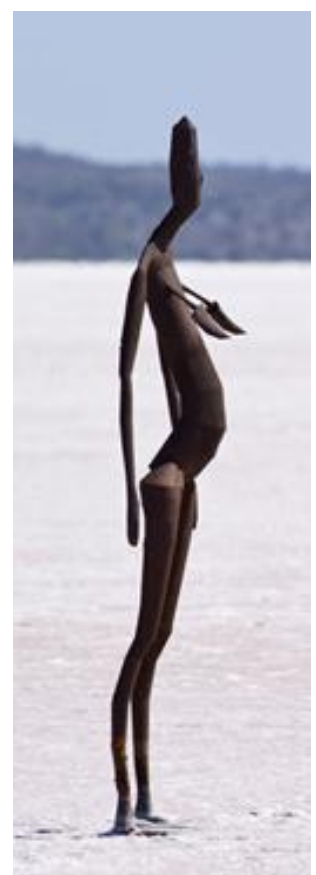


***RP5-W on Blue Waves*** by Anthony Poon, c. 1980s, [Fig. 3b]  
190 x 190 cm, Acrylic on Canvas





[Fig. 4a & 4b]  
**Alison Lapper**  
**Pregnant**, by Marc  
 Quinn, 2005,  
 355 x 180.5 x 260 cm;  
 Marble.



[Fig. 4a, 4b & 4c]  
**INSIDE AUSTRALIA** by Antony Gormley, 2002 - 2003,  
 51 cast steel sculpture (alloy of 51 elements)

\*\*\*\*Blank Page\*\*\*\*