



Hwa Chong Institution
 JC2 Preliminary Examination 2014
 (Advanced Level)

ART
Higher 1
Higher 2
 Paper 1: Study of Visual Arts

8879/01
9750/01

24th Sep 2014

Additional Materials Answer paper

3 hours

READ THESE INSTRUCTIONS FIRST

Write your Class, index number and name on all the work you hand in.

Write in dark blue or black pen.

You may use diagrams if they help you to clarify your answer.

Do not use paper clips, highlighters, glue or correction fluid.

Answer **three** questions.

One from Section A, **one** from Section B and **one** from Section C.

Refer to inserts for illustrations for Questions 1, 2, 3 and 4.

At the end of the examination, fasten all your work securely together.

All questions in this paper carry equal marks.

This document consists of **11** printed pages.

[Turn over

Section A: Structured Questions

Answer all three parts (a-c) of **one** question.

- 1** Hello Hello Bandung by Hendra Gunawan 1945 [Fig. 1]
 Oil on canvas, 210 x 300 cm
 Private collection, Indonesia

- (a) Analyse the use of composition, colour and brushwork in this painting. [10]
- (b) How has the subject matter been interpreted in this work? [10]
- (c) Compare this painting with a work by a Western or Asian artist dealing with the theme of war and/or revolution. [10]

Total [30]

- 2** Woman Derelict by Duane Hanson 1973 [Fig. 2]
 Polyester resin and fibreglass, polychromed in oil,
 mixed media, with accessories, life size
 Centraal Museum Utrecht; Netherlands

- (a) Assess the use of realism in this work. [10]
- (b) Comment on the techniques and use of materials by the artist. [10]
- (c) Compare this work with a figurative sculpture by a contemporary artist. [10]

Total [30]

Section B: Structured Comparison Questions

Answer all three parts (a-c) of **one** question.

- 3** Landscape by Cheong Soo Pieng 1960 [Fig. 3a]
Oil on canvas laid on masonite, 61.3 x 80.6 cm
Collection of National Heritage Board, Singapore

Shimmering Substance by Jackson Pollock 1946 [Fig. 3b]
Oil on canvas, 76.3 x 61.6 cm
Museum of Modern Art Collection

- (a) Compare the use of colour, brushwork and space in these paintings. [10]
- (b) What influences are evident in these works? [10]
- (c) Which image do you think is more effective in communicating the concept of abstraction, and why? [10]

Total [30]

- 4** Weeping Woman by Pablo Picasso 1937 [Fig. 4a]
Oil on canvas, 60 x 50 cm
Tate Gallery, London

Red Face by Ng Eng Teng 1986 [Fig. 4b]
Ciment fondu, paint and lacquer, 59 x 34 x 43 cm
Collection of NUS Museum

- (a) Compare the formal qualities and use of materials in these two works. [10]
- (b) Why do both artists distort the human form? [10]
- (c) Are the sculptural techniques more effective than the painting techniques in expressing the artists' intentions? [10]

Total [30]

Section C: Essay Questions

Answer **one** question.

- 5** Compare the different ideas and use of materials in the works of **two** of the following artists:

Ron Mueck
Constantin Brancusi
Damien Hirst
Andy Warhol
Amanda Heng

[30]

- 6** In your opinion, how far and how successfully did the paintings of 'The Singapore Pioneers' explore influences of **both** Western and Eastern art?

Analyse the work of **two** artists in your answer.

[30]

Picture Inserts

Fig. 1 refers to Question 1.

Fig. 2 refers to Question 2.

Fig. 3a refers to Question 3.

Fig. 3b refers to Question 3.

Fig. 4a refers to Question 4.

Fig. 4b refers to Question 4

Fig. 1 Hello Hello Bandung by Hendra Gunawan 1945
Oil on canvas, 210 x 300 cm
Private collection, Indonesia

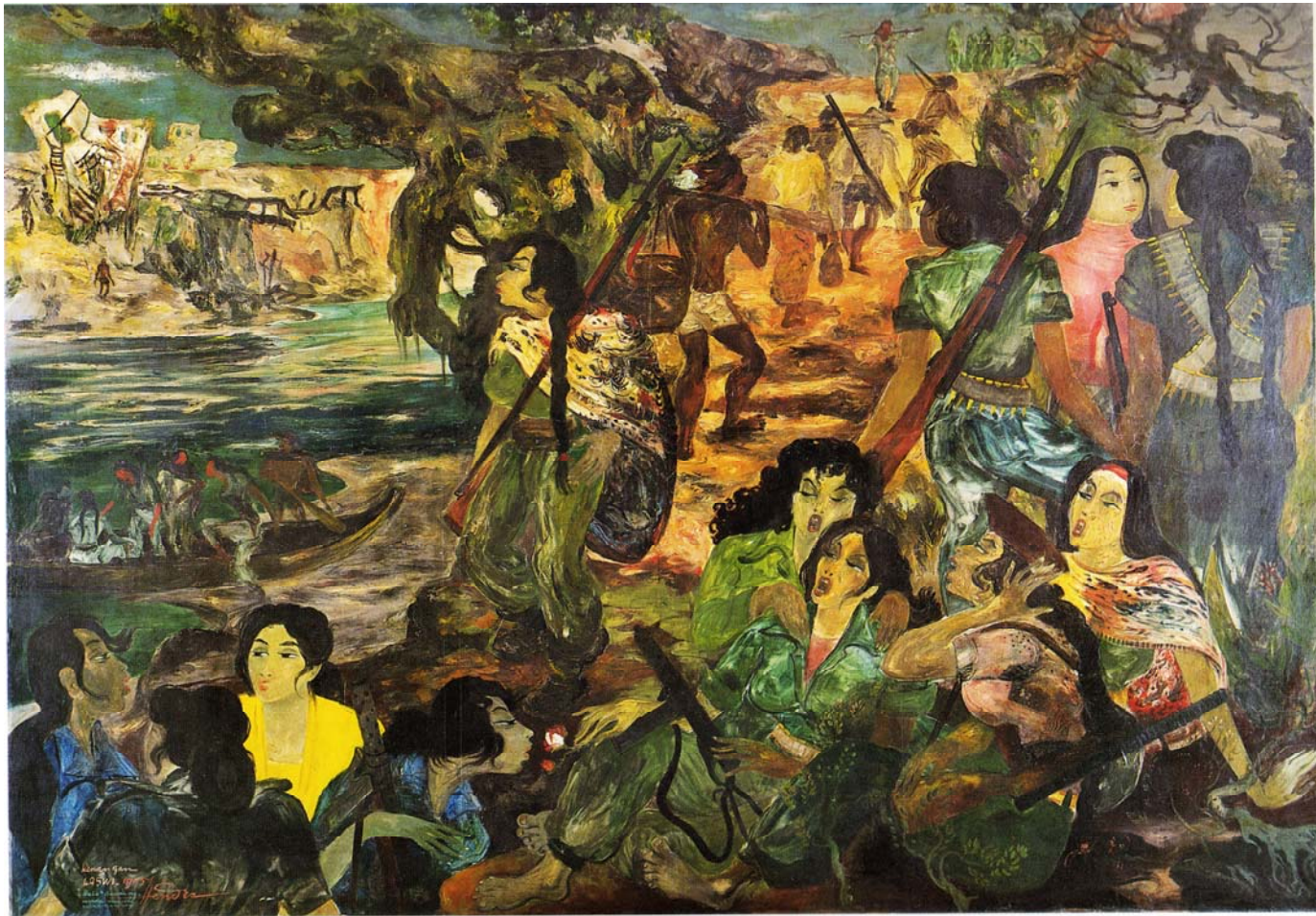


Fig. 2 Woman Derelict by Duane Hanson 1973
Polyester resin and fibreglass, polychromed in oil,
mixed media, with accessories, life size
Centraal Museum Utrecht; Netherlands



Fig. 3a Landscape by Cheong Soo Pieng 1960
Oil on canvas laid on masonite, 61.3 x 80.6 cm
Collection of National Heritage Board, Singapore

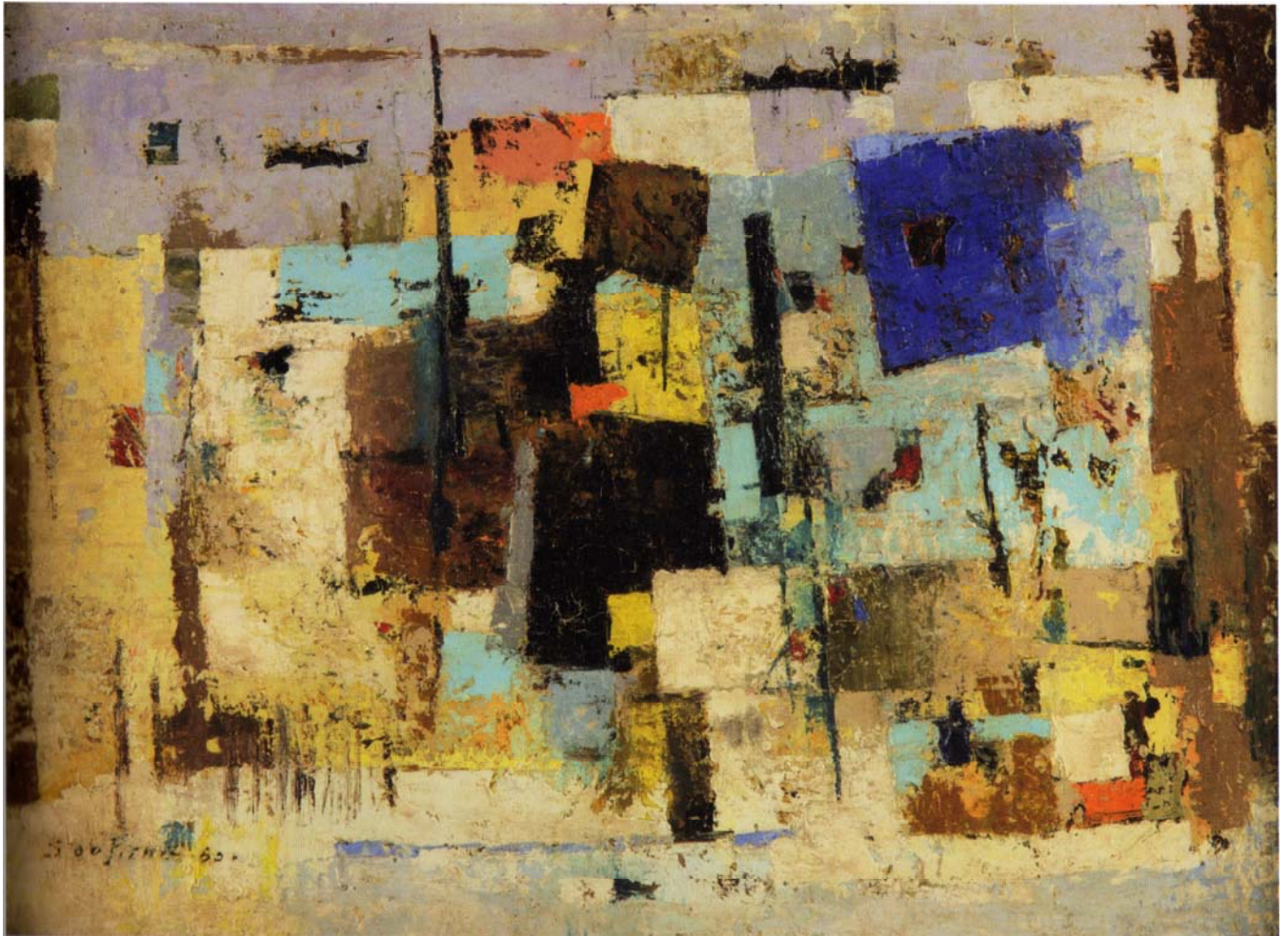


Fig. 3b *Shimmering Substance* by Jackson Pollock 1946
Oil on canvas, 76.3 x 61.6 cm
Museum of Modern Art Collection

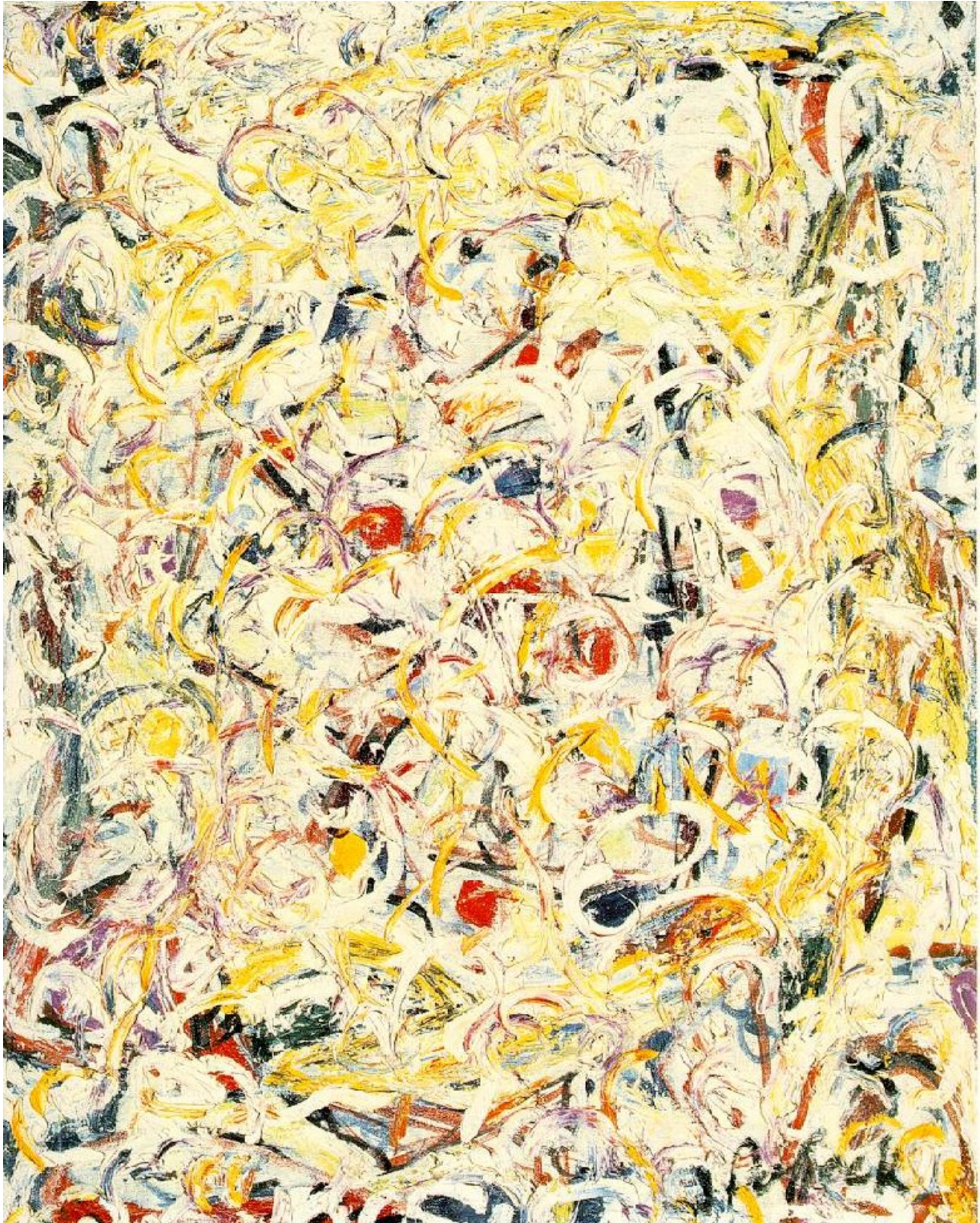


Fig. 4a Weeping Woman by Pablo Picasso 1937
Oil on canvas, 60 x 50 cm
Tate Gallery, London

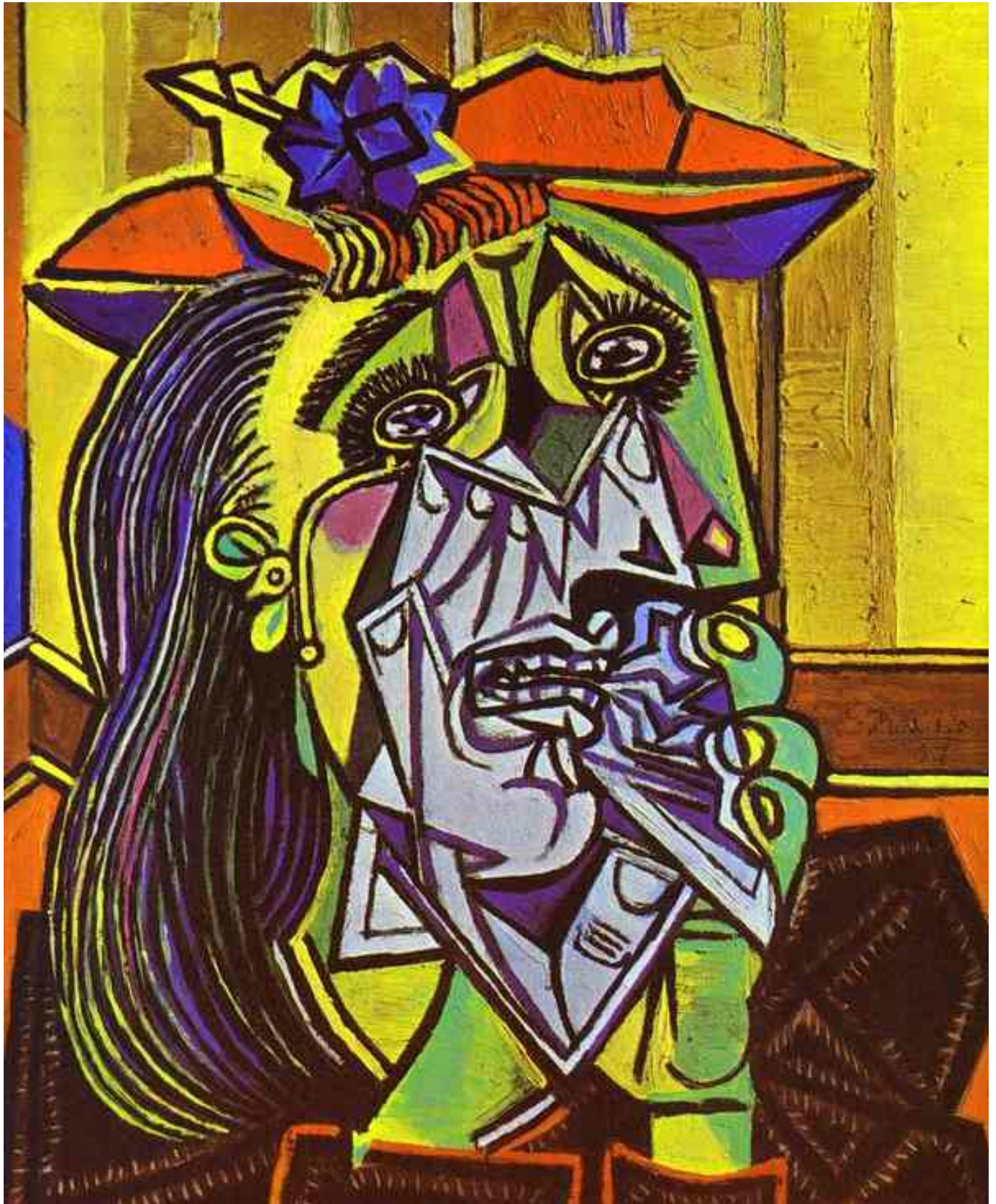


Fig. 4b Red Face by Ng Eng Teng 1986
Ciment fondué, paint and lacquer, 59 x 34 x 43 cm
Collection of NUS Museum



Fig. 4b Red Face by Ng Eng Teng 1986
Ciment fondu, paint and lacquer, 59 x 34 x 43 cm
Collection of NUS Museum

