



SERANGOON JUNIOR COLLEGE
JC2 Preliminary Examinations 2014

ART

Higher 2

9750/01

Paper 1 Study of Visual Arts

Tuesday
19 August 2014

Additional materials: Writing Paper

3 hours

INSTRUCTIONS TO CANDIDATES

Write your name, civics group on every answer sheet.
Write in dark blue or black pen on both sides of the paper.
You may use a soft pencil for any diagrams or graphs.
Do not use staples, paper clips, highlighters, glue or correction fluid.
Write your answers on the separate answer paper provided.

This paper consists of Section A, Section B & Section C.

Answer **ONE** question from each section.

Write the question number clearly.

At the end of the examination, fasten all your work securely together.

Answers should make use of appropriate subject language and terminology.
Marks will be awarded where a candidate makes relevant answers which are effective but not fully outlined in the mark scheme.
Organize your thoughts, plan and structure each answer carefully in order to present a clear and consistent essay. You may use diagrams if they help you to clarify your answers.

There are three common aims to assessment:

- 1) Artistic Perception and Interpretation
- 2) Cultural and Aesthetics Appreciation
- 3) Personal Response

For this examination, this theory paper will consist of 40% while Coursework will consist of the other 60%.

This question paper consists of 4 printed pages.
6 coloured inserts will also be given.

[Turn over

Section A: Structured Question

Answer all parts (a – c) of **one** question.

1. ***Man in a Boat*** 2002 by Ron Mueck,
Mixed Media
420 x 137 x 120 cm [Fig. 1]

- a) Describe the visual appearance of this work. [10]
- b) Comment on the materials that the artist has used to convey his intentions. [10]
- c) Compare this work with another done by a sculptor who deals with human figures. [10]

2. ***Doormat II*** 1996 by Mona Hatoum,
Stainless steel and nickel plated pins, glue and canvas
70 x 40 x 2.5 cm [Fig. 2]

- a) Discuss the ideas and subject matter presented in this painting. [10]
- b) How did the artist used materials expressively? [10]
- c) Compare the effectiveness of this piece of work to another artist who works in a similar manner. [10]

SECTION B: Structured Comparison Question

Answer all parts (a – c) of **one** question.

3. *The Physical Impossibility of Death in the Mind of Someone Living* 1991

by Damien Hirst,

Glass, Painted Steel, Silicone, Monofilament, Great White Shark and Formaldehyde solution

2170 x 5400 x 1800 cm [Fig. 3a]

***Elephant in the Room* 2006 by Banksy,**

Victorian-styled furniture, paintings, carpet and elephant

Size variable [Fig. 3b]

- a) Comment on the message that the artists are trying to convey. [10]
- b) How did the approaches used help the artists to deliver the messages of their works? [10]
- c) In your opinion, which work is more effective? [10]

4. *Double Portrait* 1988-90 by Lucien Freud,

Oil on canvas

113 x 134.5 cm [Fig. 4a]

***Woman I* 1950 -52 by Willem De Kooning,**

Oil on canvas

192.7 x 147.3 cm [Fig. 4b]

- a) Compare the treatment of the subject matter in these two works. [10]
- b) Comment on the artists' intentions. [10]
- c) Evaluate the effectiveness of these two artworks. [10]

SECTION C: Essay Question

Answer **one** question.

5. Discuss how Alberto Giacometti and Henry Moore endeavoured in their personal craft to express their artist intentions. Make reference to **at least two** artworks from each artist. [30]
6. The 21st century has seen how innovative artists revolutionised traditional art forms. Singapore has seen her fair share of how local artists have expressed their ideals through their unique style and techniques. Discuss how any two of the following artists managed to do so by making references to their artworks. [30]
- Anthony Poon
 - Chua Ek Kay
 - Ng Eng Teng
 - Salleh Japar
 - Tang Da Wu

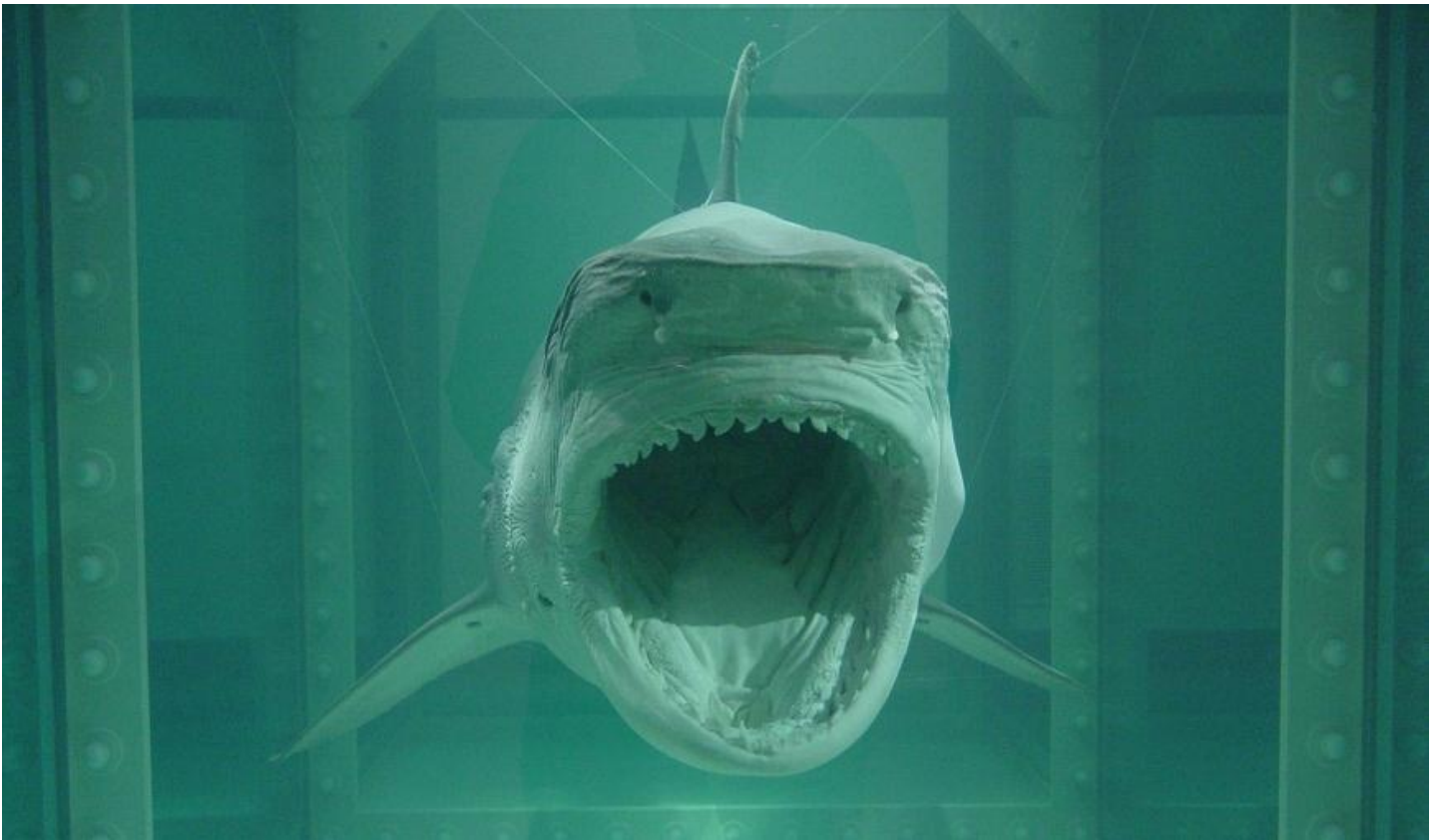
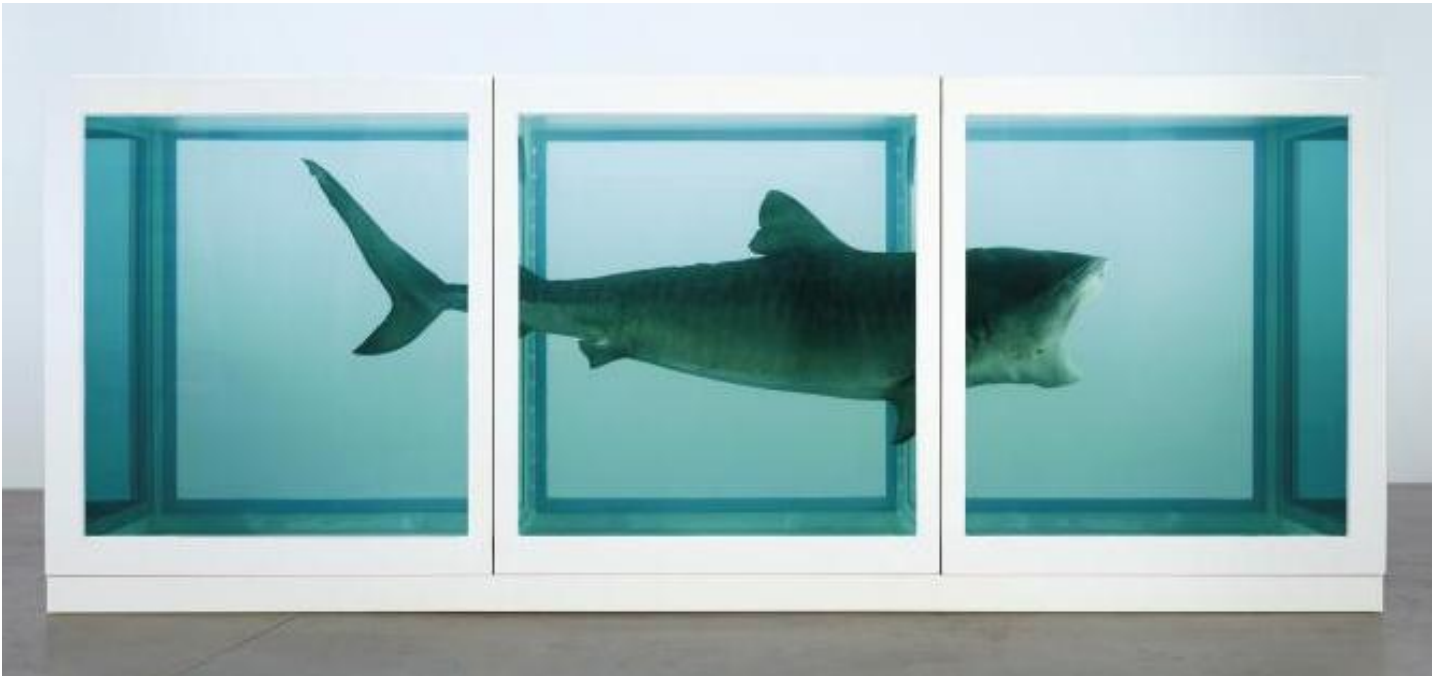
End of Paper



[Fig. 1] ***Man in a Boat*** 2002 by Ron Mueck,
Mixed Media
420 x 137 x120 cm



[Fig. 2] **Doormat II** 1996 by Mona Hatoum,
Stainless steel and nickel plated pins, glue and canvas
70 x 40 x 2.5 cm



[Fig. 3a] ***The Physical Impossibility of Death in the Mind of Someone Living*** 1991 by Damien Hirst, Glass, Painted Steel, Silicone, Monofilament, Great White Shark and Formaldehyde Solution 2170 x 5420 x 1800 cm



[Fig. 3b] ***Elephant in the Room*** 2006 by Banksy,
Victorian-styled furniture, paintings, carpet and elephant
Size variable



[Fig. 4a] **Double Portrait** 1988-90 by Lucien Freud,
Oil on canvas
113 x 134.5cm



[Fig. 4b] **Woman I** 1950-52 by Willem De Kooning,
Oil on canvas
192.7 x 147.3 cm