

स्वयं

Dedicated to
Country & People

PLUS TWO



स्वयं
KHWOPA
Secondary School
Undertaking of Bhaktapur Municipality
www.khwopahss.edu.np



Chairman's Message



On behalf of the school family, it is my pleasure to welcome you at Khwopa Secondary School. I hope you will spend your valuable time to know about our mission and goals. People of Bhaktapur have a dream of at least one graduate per family and ultimately intellectualizing the whole society. To realize this dream Khwopa College, Khwopa Engineering College, Khwopa College of Engineering, Khwopa Secondary School and Khwopa Polytechnic Institute were established.

People's representatives along with People of Bhaktapur have worked hard to establish these institutes and progress to this level. These are totally community-based pioneer efforts by the Bhaktapur Municipality in the field of education. First of all, I would like to express my deepest gratitude to people of Bhaktapur and their representatives for their untiring efforts. This is the only School under taken by municipality in the country. Backed by the people of Bhaktapur and dedicated faculties and staff, KSS is continuously progressing in imparting quality education. Similarly, the honesty and excellence shown by the students from their respective fields gives the feeling of pride to us, which they have continuously been maintaining till date. The college is equipped with adequate infrastructures to achieve the quality education. Reinforced by our excellent academic result and hard-won glory of Bhaktapur, we are aspiring to establish Khwopa University.

We will continue our effort on adding new academic programs enhancing the research excellence in the areas suitable for local national and international issues. Together we creatively address the issues and look for innovative approaches to meet the needs and desires of the students. Finally, I hope you will consider KSS as a place where your talents can be honed and you can prepare yourself for a rewarding career in the field of your interest and eventually to be morally honored and cultured citizen.

Sunil Prajapati
Mayor, Bhaktapur Municipality

Principal's Message



To recognize and respond to the needs of community has been the sustaining mission of KSS over the past years and will continue in the days ahead.

Our goal is to make difference in the lives of the young people who are enrolled in KSS by nurturing them socially and educationally. We maintain rules and regulations of discipline for the good of the students themselves.

The common effort of management committee, teachers, administrative staffs, students and parents has boomed positive growth and granted remarkable achievements to KSS. A long line of dedicated, skilled, hardworking people is working to create history of KSS. We are proud of this people's institution making recognizable landmarks in Bhaktapur.

Thank You !

Prakash Kumar Shrestha
Principal, KSS



Introduction

Situated at the ancient historical and cultural city, Bhaktapur, Khwopa Secondary School has proved itself to be the most influential academic institution in the district run by the leading academicians and enthusiast locals.

KSS was founded by Bhaktapur Municipality on 16th Shrawan, 2056 (1st August, 1999). Buoyed up with the idea of enlightening the whole society and the nation by means of providing quality education, the municipality made an aggressive initiation realizing their long term vision of the overall development of Bhaktapur. In its history of almost two decades this institution has proved itself as one of the well equipped school with national recognition.

Moving ahead with its great effort the municipality was successful in setting up Khwopa College and Khwopa Engineering College in 2001, Khwopa Polytechnic Institute in 2004 and Khwopa College of Engineering in 2009 .

The motto of KSS is to produce global leaders with sound theoretical knowledge competence and skill. That is why the institution takes every academic year as a new beginning and tries for something that is beyond attainment. The philosophy has always remained to try for something that has never been done or that others have tried but failed. This very essence is backed by experienced professors, visiting subject experts and lecturers.

Alongwith, we maintain regular classes, indepth practical assignments, field excursion and report writing which are the recipes for success of each individual student.

Objectives

- To provide quality higher education for general people at affordable fee.
- To assist on the intellectualization of society.
- To enable the new generation to cope with the challenges of 21st century.
- To include education with productive labour.
- To produce labour respecting citizens.

Mission

One Graduate in One Family





Teaching Pedagogy

- Regular Classes
- Internal Assignments
- Internal examinations
- Field visits
- Invitees/experts
- Discussion/interaction/seminar
- Presentations

Infrastructures/Facilities

- Pre entrance preparation classes
- Fully equipped laboratories
- Resourceful library and reference section
 - National Dailies
 - National weeklies
 - National/International/Periodicals
 - Text/Reference Books
- OPAC Service in the library, computerized Book issuing system
- Audio-visual aids
- OHP and multimedia
- Cafeteria
- Indoor and outdoor co-curricular activities
- Field visits
- Transportation
- Sports
- Free Internet
- Twin Building with 55 ropani premises
- Football Ground
- Volleyball Court
- Basketball Court
- Badminton Court
- Auditorium
- 65 Classrooms (Capacity 48 students)
- 14 Classrooms (Capacity 24 students)

Number of students enrolled in KSS

Year	2056	2057	2058	2059	2060	2061	2062	2063	2064	2065	2066	2067	2068	2069	2070	2071	2072	2073	2074	Total
Mgmt	93	204	218	343	363	192	102	182	257	318	365	438	441	569	532	585	511	450	607	6770
Sci	58	118	129	150	221	170	128	128	259	290	292	375	364	407	402	453	459	491	580	5474
Hum			47	93	101	92	39	40	89	108	77	61	69	69	65	54	42	97	100	1243
Total	151	322	394	586	685	454	269	350	605	716	734	874	874	1045	999	1092	1012	1038	1287	13487



Evaluation

In course of enhancing the students' academic competence through regular monitoring, KSS conducts various examinations and assignments within an academic year.

Assignments

Students are required to complete the assignments given by the faculty members within the given time frame. A student showing poor performance will be given timely academic suggestions and guidelines and parents will be counsaled in time.

Examination

KSS conducts two Terminal Examinations and a Pre Board Examination in a academic year. Pre-board Examination is conducted after the completion of the course. Students who are unable to pass the Examinations need to appear and pass in Re-Examinations otherwise they will not be allowed for NEB Examinations.

Examination	Mid term+ First term+H.A. + Attd.	Mid term+ Second term+H.A. + Attd.	Mid term+ Preboard+H.A. + Attd.	Total
Weightage	2.5% +17.5%+ 2.5 %+2.5%	2.5% +17.5%+ 2.5 %+2.5%	2.5% +42.5%+ 2.5 %+2.5%	100%



Message from Vice Principal



Dear prospective students,

I am delighted to welcome you at Khwopa Secondary School (KSS), one of the most renowned community based and service oriented educational institutions established by Bhaktapur Municipality for imparting quality education at affordable fee.

KSS provides qualified and dedicated teaching staff and adequate student facilities like up-to-date issue and reference libraries, co-curriculars activities and sports and cultural activities that are essential for the students' overall development. It also provides individual counseling and extra supportive classes for the students who face learning and behavioral difficulties.

We offer a number of elective subjects from both Management and Humanities Groups, all having wide range of scopes at higher levels.

The sound management of KSS, excellent NEB result of every year, disciplined academic environment, students' outstanding achievement at higher studies are some of the influencing factors that charm the best and the brightest students from all over the country.

So, I would like to advise any prospective student to get enrolled in this institution. And we are ready to mould you to the best in your academic career and professional future.

Bishnu Prasad Kisi (J)
Vice Principal / +2 Incharge



Admission Procedure

Management Group: The entrance test covers following 3 subjects : English, Mathematics and Account.

Humanities Group: The entrance test covers following 3 subjects : English, Nepali and Mathematics.



Grade XI

- a. Comp. English
- b. Comp. Nepali
- c. Accountancy
- d. Business Studies
- e. Computer Science
- f. Economics
- g. Hotel Management
- h. Mathematics
- i. Travel & Tourism
- J. Elements of Finance

Grade XII

- a. Comp. English
- b. Accountancy
- c. Business Studies
- d. Computer Science
- e. Economics
- f. Hotel Management
- g. Mathematics
- h. Travel & Tourism
- i. Elements of Finance
- j. Marketing
- k. Business Math



Grade XI

- a. Comp. English
- b. Comp. Nepali
- c. Optional English/Optional Nepali
- d. Economics/ Mass Communication/Culture
- e. Political Science / Maths / Sociology

Grade XII

- a. Comp. English
- b. Rural Economics/Contemporary Society
- c. Optional English/Optional Nepali
- d. Economics/ Mass Communication/Culture
- e. Political Science / Maths / Sociology



KSS grants scholarship and awards to the talented and deserving students from each stream.

Scholarship

The Management committee based on recommendation made by the concerned committee selects the recipients of scholarship and awards. Scholarship scheme for intelligent students are as follows:

Scholarship Scheme for Management Group

SN	Scholarship	Criteria	SLC /SEE	Quota	Requirement
1	Special Talent	Minimum 70% (Entrance Merit)	GPA 3.70 and above	5	At least 65% marks should be secured in Terminal Examination for continuity of Scholarship
2	School Toppers (SEE) (Smart)	Minimum 70% (Entrance Merit)	GPA 3.65 and Above	3	
3	Special Talent	Minimum 65% in Entrance Exam	Topper in Entrance Exam	1	
4	Excellence	Minimum 60% in Entrance Exam	Top 2 to 6	5	
5	Smart	Minimum 60% in Entrance Exam	Top 7 to 11	5	
6	Monthly fee Off (100%)	Minimum 55% in Entrance Exam	Top 12 to 21	10	At least 55% marks should be secured in Terminal Examination for continuity of Scholarship
7	Monthly fee Off (75%)	Minimum 55% in Entrance Exam	Top 22 to 31	10	
8	Monthly fee Off (50%)	Minimum 55% in Entrance Exam	Top 32 to 41	10	
9	Monthly fee Off (25%)	Minimum 55% in Entrance Exam	Top 42 to 51	10	
10	Smart	Minimum 55% in Entrance Exam	Government School (Entrance Merit)	3	
11	Result Based Scholarships	Top Ten Students in Each Terminal Examinations	Top 1 to 10	10	Students are awarded an installment as scholarship (Class XI & XII)
12	NEB Recommended Scholarship				

Scholarship Scheme for Humanities Group

SN	Scholarship	Criteria	SLC /SEE	Quota	Requirement
1	Special Talent	Minimum 65% (Entrance Merit)	GPA 3.60 and above	2	At least 60% marks should be secured in Terminal Examination for continuity of Scholarship
2	School Toppers (SEE) (Smart)	Minimum 65% (Entrance Merit)	GPA 3.55 and Above	1	
3	Special Talent	Minimum 65% in Entrance Exam	Topper in Entrance Exam	1	
4	Excellence	Minimum 60% in Entrance Exam	Top 2nd Rank	1	
5	Smart	Minimum 60% in Entrance Exam	Top 3 & 4	2	
6	Monthly fee Off (100%)	Minimum 50% in Entrance Exam	Top 5 & 6	2	At least 50% marks should be secured in Terminal Examination for continuity of Scholarship
7	Monthly fee Off (75%)	Minimum 50% in Entrance Exam	Top 7 & 8	2	
8	Monthly fee Off (50%)	Minimum 50% in Entrance Exam	Top 9 & 10	2	
9	Monthly fee Off (25%)	Minimum 50% in Entrance Exam	Top 11 & 12	2	
10	Smart	Minimum 55% in Entrance Exam	Government School (Entrance Merit)	1	
11	Result Based Scholarships	Top Three Students in Each Terminal Examinations	Top 1 to 3	3	Students are awarded an installment as scholarship (Class XI & XII)
12	NEB Recommended Scholarship				

Special Talent – Complete Scholarship for Class XI & XII (Excluding Uniform) • Excellence – Complete Scholarship for Class XI (Excluding Uniform) • Smart – Complete Scholarship for Class XI (Excluding Uniform + Admission fee)
 Note: NEB regarding fees should be paid by all students.

Management XI Toppers



Suraj Gosain
Rank 1



Durga Shrestha
Rank 2



Abhisek Shrestha
Rank 3



Bina Chhawa
Rank 4



Saru Rai
Rank 5



Suman Hengaju
Rank 6



Smriti Purkuti
Rank 7



Diya Shrestha
Rank 8



Reja Pradhan
Rank 9



Sandhya Neupane
Rank 10



Sarita Shrestha
Rank 11



Anu Yogal
Rank 12



Kerina Manadhar
Rank 13



Minan Suwal
Rank 14



Puja Karmacharya
Rank 15



Ruby Saiju
Rank 16



Sunena Manandhar
Rank 17



Amrit Timilsina
Rank 18



Shyam Tamang
Rank 19



Monika Thapa
Rank 20



Rabina Sujakhu
Rank 21



Rojina Labre
Rank 22



Rojit Shilpakar
Rank 23



Sameet Shakya
Rank 24



Sarishma Bade
Rank 25



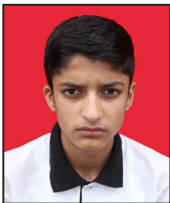
Sarita Dangol
Rank 26



Bina Timilsina
Rank 27



Supriya Ghimire
Rank 28



Sushil Adhikari
Rank 29



Sushil Khayamali
Rank 30

NEB Result in the Academic Year 2074/75

Appeared	Passed	Percentage
404	336	83.17%

Result was published on the basis of grade.

This list contains students having grade above D+ in all subjects

Humanities XI Toppers



Namrata Khadka
Rank 1



Sumit Humagain
Rank 2



Dipika Kusi
Rank 3



Sona Chhusyabaga
Rank 4



Usha Baniya
Rank 5



Suja Malekar
Rank 6



Sonu K.C
Rank 7



Rachana Thapa
Rank 8



Bibek Pandey
Rank 9



Sushmita Shrestha
Rank 10

NEB Result in the Academic Year 2074/75

Appeared	Passed	Percentage
84	70	83.33%

Result was published on the basis of grade.

This list contains students having grade above D+ in all subjects

Management XII Toppers



Megha Shakya
Rank 1, 86.4%



Saru Magaju
Rank 2, 86.2%



Bina Thapa
Rank 3, 83.4%



Pradesh Gwachha
Rank 4, 83%



Sunita Jati
Rank 5, 83%



Juli Manandhar
Rank 6, 82.6%



Grishma Bhandari
Rank 7, 81.6%



Reshma Manandhar
Rank 8, 81.6%



Junita Marikhu
Rank 9, 81%



Ganesh Prasad
Rank 10, 80.8%



Sabina Dahal
Rank 11, 79.8%



Bidhya Khyamali
Rank 12, 79.8%



Laxmi Ale Magar
Rank 13, 79.6%



Manoj Sinkhwal
Rank 14, 79.6%



Samjhana Magaju
Rank 15, 78.6%



Amir Shrestha
Rank 16, 78.4%



Neelu Tamakhu
Rank 17, 78.2%



Pradip Dhakal
Rank 18, 78%



Reena Suwal
Rank 19, 77%



Anjana Thapa
Rank 20, 77%



Sunita Hengaju
Rank 21, 76.8%



Ashim Lamichhane
Rank 22, 76.6%



Bizay Khatri
Rank 23, 76.4%



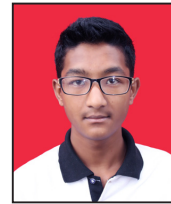
Bibek Adhikari
Rank 24, 76%



Sijan Khadka
Rank 25, 75.8%



Sunil Phoju
Rank 26, 75.8%



Rakesh Nayaju
Rank 27, 75.4%



Bimal Hemba
Rank 28, 75.2%



Kabita Bati
Rank 29, 75.2%



Jaya Sundar Shilpkar
Rank 30, 75%

NEB Result in the Academic Year 2074/75

Appeared	Passed	Percentage
478	436	91.21%

NEB Result in the Academic Year 2074/75

Appeared	Passed	Percentage
39	37	94.87%

Humanities XII Toppers



Rina Pahi
Rank 1, 71.8%



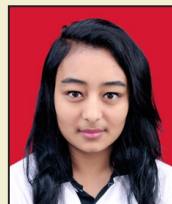
Prabin Lakhaju
Rank 2, 70.4%



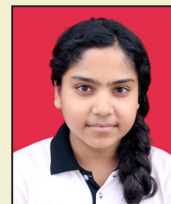
Apphia Sunuwar
Rank 3, 69.4%



Rupika Budha Shrestha
Rank 4, 68.8%



Rija Shrestha
Rank 5, 67.4%



Ashmita Devi Khadka
Rank 6, 66.6%



Deepa Parajuli
Rank 7, 66%



Shubhayu Lama
Rank 8, 65.8%



Rasila Sainju
Rank 9, 65.6%



Asmita Bhandari
Rank 10, 65%



Sajana Khadka
Rank 11, 62.2%



Rukesh Thimi
Rank 12, 61%



Ashmit Raj Khatiwada
Rank 13, 60.8%



Anu Duwal
Rank 14, 60.2%

Soni Shilpkar
Rank 15, 60%

Message from Vice Principal



I'm highly pleased that our school is recognized as a leading institution in teaching and learning, student relationships and wellbeing. We create an amicable social and physical environment that helps all our students learn and succeed.

The size of the school with well-equipped labs and library and the emphasis on developing and maintaining positive relationships means that we know each student as an individual. We can provide personal support and great access to opportunities in each student's academic, intellectual, and moral growth.

There is a genuine sense of community amongst teachers, students and parents, which we are all very proud of. For this, parents and visitors compliment us on the warm and orderly school atmosphere and our strong sense of community. We encourage all our students to develop high expectations about themselves, their work and their behavior, which is an expression of our values of Personal Best, Integrity, Respect and Responsibility.

Our approach involves working with parents to meet the individual needs of every student, and supporting them to fulfill their academic and co-curricular goals and dreams. The broad range of opportunities and pathways offered in our school, including regular classes, scheduled class tests, regular home assignments, terminal examinations, tutorials for needy students, seminar, workshop, and audio-visual classes cater for the diverse interests, needs and abilities of our students.

I am proud of the significant accomplishments of our students and the results our school has achieved in being a better choice in education.

Best Regards,

Laxmi Prasad Karmacharya
Vice Principal / +2 Incharge

Admission Procedure

An entrance examination followed by an interview is compulsory for all the students seeking admission.

Science Group: The entrance test covers following 3 subjects : English, Science and Mathematics.



Course Combination



Grade XI

- a. Comp. English
- b. Physics
- c. Chemistry
- d. Biology /Computer Science
- e. Mathematics

Grade XII

- a. Comp. English
- b. Comp. Nepali
- c. Physics
- d. Chemistry
- e. Biology-Bio group
Mathematics-Physical group

Scholarship

KSS grants scholarship and awards to the talented and deserving students from each stream.

The Management committee based on recommendation made by the concerned committee selects the recipients of scholarship and awards. Scholarship scheme for intelligent students are as follows:

Scholarship Scheme for Science Group

SN	Scholarship	Criteria	SLC /SEE	Quota	Requirement
1	Special Talent	Minimum 70% (Entrance Merit)	GPA 3.85 and Above	5	At least 70% marks should be secured in Terminal Examination for continuity of Scholarship
2	School Toppers (SEE) (Smart)	Minimum 70% (Entrance Merit)	GPA 3.75 and Above	3	
3	Special Talent	Minimum 70% in Entrance Exam	Topper in Entrance Exam	1	
4	Excellence	Minimum 70% in Entrance Exam	Top 2 to 6	5	
5	Smart	Minimum 70% in Entrance Exam	Top 7 to 11	5	
6	Monthly fee Off (100%)	Minimum 60% in Entrance Exam	Top 12 to 19	8	At least 60% marks should be secured in Terminal Examination for continuity of Scholarship
7	Monthly fee Off (75%)	Minimum 60% in Entrance Exam	Top 20 to 27	8	
8	Monthly fee Off (50%)	Minimum 60% in Entrance Exam	Top 28 to 35	8	
9	Monthly fee Off (25%)	Minimum 60% in Entrance Exam	Top 36 to 43	8	
10	Smart	Minimum 65% in Entrance Exam	Government School (Entrance Merit)	3	
11	Result Based Scholarships	Top Ten Students in Each Terminal Examinations	Top 1 to 10	10	Students are awarded an installment as scholarship (Class XI & XII)
12	NEB Recommended Scholarship				

Special Talent – Complete Scholarship for Class XI & XII (Excluding Uniform) - Excellence – Complete Scholarship for Class XI (Excluding Uniform)

Smart – Complete Scholarship for Class XI (Excluding Uniform + Admission fee)

Note: NEB regarding fees should be paid by all students.



Science XI Toppers



Ankit Barun
Rank 1



Asika Ghemasu
Rank 2



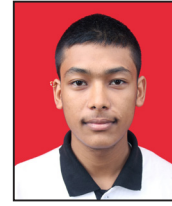
Gaurav Jyakhwa
Rank 3



Minu Gasai
Rank 4



Pragun Shrestha
Rank 5



Sanish Ghosaine
Rank 6



Susmita Tachamo
Rank 7



Roshaj Raj Karki
Rank 8



Rubin Baidya
Rank 9



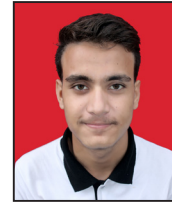
Indramani Bashyal
Rank 10



Kabita Dhakal
Rank 11



Manita Tamrakhar
Rank 12



Sabin Thapa
Rank 13



Santosh Maka
Rank 14



Bibek Joshi
Rank 15



Ashish Khatakho
Rank 16



Bishad Koju
Rank 17



Gobindha Shrestha
Rank 18



Monika Khyaju
Rank 19



Nishant Shrestha
Rank 20



Rakesh Paudel
Rank 21



Risha Silpakar
Rank 22



Rubina Nagaju
Rank 23



Sahana Tamang
Rank 24



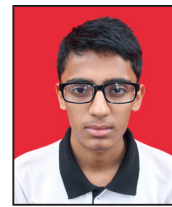
Shristi Garu
Rank 25



Anish Machhamasi
Rank 26



Rikesh Lawoju
Rank 27



Aakash Sapkota
Rank 28



Prajwol Manandhar
Rank 29



Sanjeep Bhattarai
Rank 30



Shasila Acharya
Rank 31



Shristi Manandhar
Rank 32



Manish Wagle
Rank 33



Saksham Prajapati
Rank 34



Swostika Basukala
Rank 35



Bibek Thapa
Rank 36



Manjali Tamang
Rank 37



Niruta K.c
Rank 38



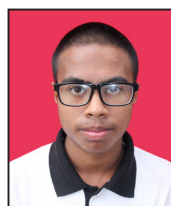
Nripesh Karmacharya
Rank 39



Suresh Khadka
Rank 40



Aayusha Joshi
Rank 41



Anil Sintakala
Rank 42



Idan Prajapati
Rank 43



Kripan K.c
Rank 44



Modita Manandhar
Rank 45



Pujan Chaguthi
Rank 46



Reshma Nayabhari
Rank 47



Umesh Dhahal
Rank 48



Rose Kibanayo
Rank 49



Suruchi Bhandari
Rank 50

NEB Result in the Academic Year 2074/75

Appeared	Passed	Percentage
479	433	90.40%

Result was published on the basis of grade.
This list contains students having grade above D+ in all subjects

Science XII Toppers



Bikash Shrestha
Rank 1, 86.4%



Narendra Khatiwada
Rank 2, 86.2%



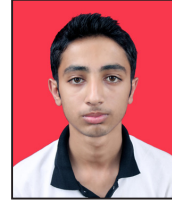
Rochak Shrestha
Rank 3, 85.4%



Roshan Phuyal
Rank 4, 85%



Josana Shrestha
Rank 5, 84.6%



Anish Banjara
Rank 6, 84.6%



Jenisha Khayamali
Rank 7, 84.4%



Shiva Kumar Dhakal
Rank 8, 84.2%



Alisha Twayana
Rank 9, 84%



Aakash Basu
Rank 10, 84%



Bijeta Gelal
Rank 11, 83.8%



Niranjan Bekaju
Rank 12, 83.6%



Suroj Sulu
Rank 13, 83.4%



Kristal Manandhar
Rank 14, 83.4%



Sagar Dulal
Rank 15, 83.4%



Sanam Shrestha
Rank 16, 83.2%



Jasmine Kawan
Rank 17, 83%



Sushant Raj Bharati
Rank 18, 83%



Madhusudan Gauttam
Rank 19, 83%



Amar Shrestha
Rank 20, 82.8%



Bibek Gosai
Rank 21, 82.6%



Saroma Awal
Rank 22, 82.6%



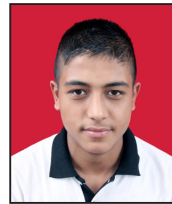
Sujata Ghimire
Rank 23, 82.6%



Bina Thapa Magar
Rank 24, 82.4%



Aashish Lageju
Rank 25, 82.4%



Purshotam Khatri
Rank 26, 82.4%



Binita Bhainatwo
Rank 27, 82.4%



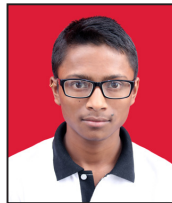
Samjhana Pokharel
Rank 28, 82.2%



Balkrishna Paudel
Rank 29, 82.2%



Dipesh Lamichhane
Rank 30, 82%



Suroj Duwal
Rank 31, 81.8%



Pralhad Kafle
Rank 32, 81.8%



Sadhana Subedi
Rank 33, 81.8%



Kabita Basi
Rank 34, 81.8%



Bibek Sanjel
Rank 35, 81.6%



Rabindra Karmacharya
Rank 36, 81.6%



Sabita Phoju
Rank 37, 81.4%



Anurag Karki
Rank 38, 81.4%



Ajeet Kumar Tamang
Rank 39, 81%



Hanik Lakhe
Rank 40, 81%



Anjali Tako
Rank 41, 80.6%



Binu Napit
Rank 42, 80.6%



Nishan Twayana
Rank 43, 80.4%



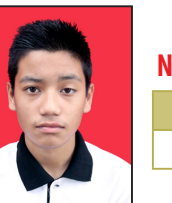
Shristi Shilpakar
Rank 44, 80.2%



Anusha Bajracharya
Rank 45, 80.2%



Sanjeev Sainju
Rank 46, 80.2%

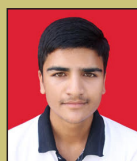


Aman Mool
Rank 47, 80%

NEB Result in the Academic Year 2074/75

Appeared	Passed	Percentage
446	424	95.07%

Scholarship Achievements in 2074



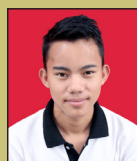
Aashish Lamichhane
MOE, MBBS



Jasana Shrestha
B Pharmacy,
NIST College



Jenisha Khayamali
BDS, KU



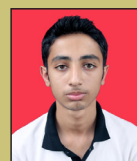
Tilak Ghartimagar
BSc Agri, Rampur



Rochak Shrestha
CA



Prakash Bashyal
ERC, Dharan



Anish Banjara
ERC, Dharan



Amar Shrestha
HICAST



Nabin Libi
HICAST



Aashish Thapa Magar
IOE



Suroj Sulu
KCE, Bkt



Aakash Basu
KCE, Civil



Sanam Shrestha
KCE, Civil



Niranjana Bekaju
KEC, Bkt



Kristal Manandhar
KU, Comp. Eng



Sushila Maka
MOE, BSc Nursing



Bina Thapa Magar
MOE, MBBS



Sagar Dulal
NEC Eng



Bikash Shrestha
Pulchok Eng



Roshan Phuyal
Pulchok Eng



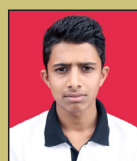
Sushant Raj Bharati
Pulchok Eng



Kishore Karki
Pulchok Eng



Anurag Karki
Pulchok Eng



Puspa Raj Neupane
Thapathali Eng



Purshotam Khatri
Thapathali Eng



Dipesh Lamichhane
WRC, Pokhara

Outstanding Achievements of Science Students

SN	Name	Scholarship
1	Kharasti Prajapati	MOE, MBBS
2	Diwakar Gaida	MOE, MBBS
3	Dibesh Shrestha	Thapathali, Civil Eng.
4	Alish Koju	Bhairawaha, DBH
5	Nabin Pakka	Pulchok Eng.
6	Namrata Phuyal	Bio. Sci. (Southeastern Louisiana Uni., US)
7	Sanjiv Gautam	KU, Comp. Eng.
8	Anjelika Sah	KU, Comp. Eng
9	Sajan Khatri	IT, Australian Uni.
10	Bijay Tamang	Eng., Dharan
11	Naresh Suwal	MBBS, Bangladesh
12	Sudeep Kuikel	KU, Geometric Eng.
13	Sweata Sahukhal	IOE, Thapathali
14	Roshan Khattri	KU, Eng.
15	Siddhartha Shakya	Pulchok Eng.
16	Susan Bajracharya	KU, Eng.
17	Kushum Ranjitkar	KU, Comp. Eng.
18	Prashant Raut	KU, Medical
19	Sarishma Ranjitkar	KU, Nursing
20	Bikesh Lakhe	IOE, TU
21	Daniel Siwakoti	IOE, TU
22	Elish Gyamaru	IOE, TU
23	Kapil Dahal	IOE, TU

SN	Name	Scholarship
24	Kishan Rahul Prajapati	IOE, TU
25	Krijan Shrestha	IOE, TU
26	Kritish Pahi	IOE, TU
27	Laxmi Prasad Oli	IOE, TU
28	Madhav Pyakurel	IOE, PU
29	Roshan Kasula	IOE, TU
30	Kishan Rahul Prajapati	IOE, TU
31	Anish Shrestha	IOE, TU
32	Bikesh Lakhe	IOE, TU
33	Pinky Sitikhu	IOE, TU
34	Krijan Shrestha	IOE, TU
35	Nijal Lawaju	IOE, TU
36	Sabin Shilpakar	IOE, TU
37	Sagar Sainju	IOE, TU
38	Suresh Twyalbasu	IOE, TU
39	Asmin Bhattarai	IOE, TU
40	Sushant Parajuli	IOE, TU
41	Suraj Rana	IOE, TU
42	Abin Phoju	IOE, TU
43	Rabin Kasula	IOE, TU
44	Archana Karki	IOM, BSc. Nursing
45	Sanam Duwal	IOM, BSc. Nursing
46	Shuva Laxmi Pandey	IOM, BSc. Nursing
47	Sujita Bati	IOM, BSc. Nursing
48	Amrit Shrestha	IOM, MBBS

SN	Name	Scholarship
49	Bikram Kumpakha	IOM, MBBS
50	Dijen Sujakhu	IOM, Optometry
51	Raju Kaiti	IOM, Optometry
52	Ashish Ganesh	MOE, Indian Embassy
53	Ashish Maka	MOE, MBBS
54	Deepak Lohala	MOE, MBBS
55	Dhan Lal Dong Tamang	MOE, MBBS
56	Kanchan Twati	MOE, MBBS
57	Nischal Shrestha	MOE, MBBS
58	Rabin Gosai	MOE, MBBS
59	Renu Bhuju	MOE, MBBS
60	Saru Prajapati	MOE, MBBS
61	Shreedhar Paudel	MOE, MBBS
62	Sundar Gaida	MOE, MBBS
63	Sunil Khadka	MOE, MBBS
64	Suroj Hakuduwal	MOE, MBBS
65	Tapendra Koirala	Patan Hospital, MBBS
66	Anita Prajapati	IOE, TU
67	Ramesh Prajapati	IOM, MBBS

This is not an exhaustive list.

Scholarship Achievements & Placements in 2074



Bina Thapa
BBA



Juli Manandhar
BBA



Reshma Manandhar
BBA



Junita Marikhu
BBA



Sabina Dahal
BBA



Laxmi Ale Magar
BBA



Sunita Hengaju
BBA



Radhashyam Dulal
BBA



Pradesh Gwachha
BIM



Jaya Sundar Shilpkar
BIM



Sunil Phoju
BIT



Megha Shakya
CA



Saru Magaju
CA



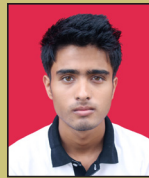
Samjhana Magaju
CA



Reena Suwal
CA



Bikram Moktan
NATHM



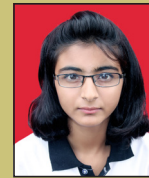
Pujan Serpali
NATHM



Reeya Duwal
NATHM



Dibas Raaz Sapkota
NATHM



Grishma Bhandari
NATHM

Outstanding Achievements of Management Students

SN	Name	Position/Field
1	Gajendra Rajbanshi	BBA
2	Sunita Bakhuchhen	BBA
3	Jenisha Sadha	BBA
4	Manjari Chansi	BBA
5	Rasish Kilambu	BBA
6	Manusha Dahal	BBA
7	Babin Boyaju	BBA
8	Ankita Rai	BIM
9	Sajan Shrestha	BIM
10	Hemant Shrestha	BIM
11	Kapil Dhakal	CA
12	Gaurab Rajbhandari	CA
13	Rishma Thuyaju	CA
14	Sanju Bade	CA
15	Sujit Shrestha	CA
16	Amir Thapa	CA
17	Rojeeta Ranjit	NATHM
18	Jina Thuya	NATHM
19	Sahadev Nepal	NATHM
20	Anish Musyakhwo	NATHM
21	Nisha Pradhananga	Trekking Company
22	Prabin Nakarmi	Technician (Nepal Airlines)

SN	Name	Position/Field
23	Prabina Awal	Junior Assistant (Everest Bank)
24	Pragati Shrestha	Teller (Finance)
25	Prashuram Chaudhary	Accountant (German Project)
26	Prawin Swongamikha	Sanima Bank
27	Rabina Laghu	Junior Assistant (NMB Bank)
28	Ram Krishna Prajapati	Lecturer KC
29	Ram Prasad Tyata	Officer (NIC Asia Bank)
30	Rameswori Bakhuchhen	Lecturer KC
31	Resna Suwal	Accountant (Finance)
32	Rukesh Kaiti	Asst. Manager (Nepal Bank Ltd.)
33	Sabita Shrestha	Loan Officer (Finance)
34	Sanjog Suwal	Sanima Bank (Itahari)
35	Santoshi Rimal	TU Topper and Former Lecturer KC
36	Sanu Babu Bajracharya	CBR Bhaktapur
37	Saroj Dev Pradhan	Lecturer KC
38	Shobha Dhanju	NIC Asia Bank, Pepsicola
39	Shreejana Bajracharya	Officer (Nepal Bank Ltd.)
40	Subhadra Banmala	Nabil Bank
41	Sundar Suwal	Rastriya Banijya Bank
42	Sunil Thusa	Officer (Nepal Bank Ltd.)
43	Ukesh Nhisutu	Asst. Manager (Rastriya Banijya Bank)
44	Utsav Makaju	Senior Officer (Bhaktapur Finance Ltd)

This is not an exhaustive list.



School Management Committee

Sunil Prajapati
Chairman

(Mayor of Bhaktapur Municipality)

Rajani Joshi
Vice-Chairman

(Deputy Mayor of Bhaktapur Municipality)

Rabindra Jyakhwo
Member

(9 No. Ward Committee Chairman, Bhaktapur Municipality)

Hari Ram Suwal
Member

(6 No. Ward Committee Chairman, Bhaktapur Municipality)

Prakash Kumar Shrestha
Member Secretary

(Principal)

School Program Committee

Prakash Kumar Shrestha (Principal)

Chairman

Laxmi Prasad Karmacharya (Vice-Principal)

Member

Bishnu Prasad Kisi (Vice-Principal)

Member

Rajesh Kumar Shrestha (Vice-Principal, Khwopa College)

Member

Kaminika Nyaichyai (BA & MA Incharge)

Member

Pramod Prasad Awal (BSc & MSc Incharge)

Member

Bishnu Prasad Kishi (Exam Head)

Member

Laxmi Sundar Koju (Administrative Officer)

Member

Krishna Ram Pahi (Account Officer)

Member

Roopak Joshi (Principal, Khwopa College)

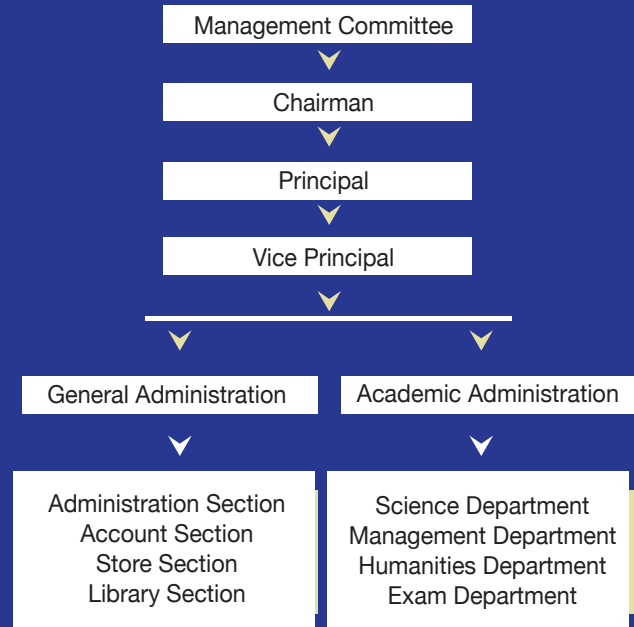
Invitee

Tulsi Ram Suwal (Store Assistant)

Invitee



Organizational Structure



Faculty Members

Accountancy

Bishnu Prasad Kishi (N)
Bishnu Prasad Kisi (J)
Indra Mani Giri
Jagadish Chandra Ghimire
Jeewan Sainju
Kamal Byanju
Keshari Maiya Gwachha
Krishna Ram Pahi
Ram Sundar Pawn Shrestha

B. Mathematics

Jitendra Kayastha
Mina Gumanju
Rajesh Kumar Shrestha, PhD.

Biology

Chandika Koju
Gyan Laxmi Kila Shrestha
Laxmi Prasad Karmacharya
Prativa Shrestha (Lab)
Neera Shrestha
Rajeena Awal
Sabin Suwal (Lab)
Sarjina Basukala
Shreejal Shukla
Prof. Siddhi Bir Karmacharya, PhD.
Tulsi Kumar Lasiwa
Pratibha Shrestha

Business Studies

Ash Kumar Jareju
Bina Basi
Chakra Bahadur Chakatu
Jaya Ram Gorkhali
Krishna Laxmi Kisi
Ramesh Datt Joshi
Sunila Hada
Utsab Makaju

Chemistry

Ash Bahadur Ngakushi
Ashok Bajracharya

Dil Laxmi Sinkemana
Dipendra Kumar Kushwaha
Gayatri Maiya Koju
Hari Gopal Shrestha
Nabaraj Budhathoki
Parlin Yakami (Lab)
Pramila Prajapati
Ram Krishna Duwal
Ravi Kumar Bhurtel
Rojeena Thusa
Shailaja Aryal (Risal)
Shova Tanabasu
Binod Sakhakarmi (Lab)

Computer Science

Ayush Dumar
Bikash Chawal
Naresh Khatri
Raja Ram Dhukhwa
Rajan Kushi
Rajendra Manandhar
Shree Ram Khaitu
Umesh Duwal
Bijjwel Suwal (Lab)

Culture

Bishwo Mohan Joshi
Purushottam Lochan Shreshta

Economics

Anju Suwal
Dilip Kumar Pyatha
Parshu Ram Gelal
Prakash Khanal
Rajan Phanju
Sabita Kalu
Saroj Tamrakar
Suraj Shrestha

Element of Finance

Satya Ram Kisi

English

Anamika Dhungana
Bachu Ram Sapkota
Bharat Dhungel
Dev Laxmi Gwachha
Gokarna Dulal
Hem Raj Joshi
Janak Raj Das
Kaminika Nyaichyai
Maya Devi Upreti
Pratibha Prajapati
Rajan Gwachha
Ram Kasula
Sama Raj Dulal
Sameer Lochan Jha
Seema Lamichhane
Surendra Bhakta Suwal

Hotel Management

Anjala Suwal
Dhiraj Joshi

Marketing

Chanchal Suwal
Madhab Thapa

Mass communication

Brabim Basnet
Krishna Ram Kishee

Mathematics

Ganesh Kaman Singh Rawal
Gauri Bhuju
Laxmi Sundar Suwal
Meena Machamasi
Raj Kumar Pradhan
Shalik Ram Timalisina
Sharmila Shrestha
Som Kumar Shrestha

Nepali

Bimal Pradhan
Bishnu Khatiwada
Dilliraj Joshi

Gokul Prasad Dhakal
Madan Gautam
Mina Mahat
Ramesh Adhikari
Rudra Bahadur Raut
Sushama Risal Sapkota
Tika Shrestha

Physics

Amrit Kiju
Anjan Chhusyabaga
Badri Nath Nakarmi
Bala Ram Mushyakhwo
Deepak Nepal
Gyan Bahadur Shrestha
Jaya Ram Maharjan
Jeewan Poudel
Kanchan Sagra Nyaichyai
Neeru Shrestha
Prakash Kumar Shrestha
Ram Krishna Hyaunmikha
Riddhi Bhakta Koju
Sabina Twanabasu
Sandesh Chhukan
Sarju Phasikawa (Lab)
Saroj Kumar Rajlawat
Shyam Hari Prajapati
Yagya Bahadur Woli
Dev narayan Shayaju (Lab)

Pol. Science

Himali Ranamagar
Raju Lasiwa

Sociology

Keshav Tamakhu

Travel & Tourism

Ujjola Suwal

Student Dealing Room

Roshan Machamasi
Ramesh Prajapati



Faculty Wise Toppers of 2073-2074 Batch



Studying at Khwopa SS has been a very pleasant moment of my life. Regular assignments & evaluation, the best possible environment to study, quality education with affordable fee, friendly and expert faculty members, extra-curricular activities for physical, mental, and psychological fitness are my experiences at Khwopa. I am truly proud of being a student of this school and would like to welcome the students once to experience the educational flavour at Khwopa.

Rochak Shrestha
Science Topper (Boy)



Moments spent at KSS was a mishmash of life changing experiences and nostalgic remembrances with my wonderful friends. Well my experience at KSS has taught me one fundamental thing – Your present decides your future. Whatever you do tomorrow, wherever you will be it entirely depends on the hardwork that you do today. Today being a student of Kathmandu University School of Medical Science I remember my dedicated, hardworking and loving teachers of KSS who enlightened me with deep knowledge not only about physics, chemistry and biology but also about the life skills. Choosing KSS as my high school was one of the best decision I have ever made and I have no regrets about it.

Jenisha Khayamali
Science Topper (Girl)



No one would be fortunate unless there is someone who made him/her fortunate. There is no denying that KSS has succeeded in fulfilling its motto. I would like to thank KSS from the depth of my heart for guidance, moral education and foremost quality education with which I am able to be where I am right now. Hope for success and achievement for better future.

Pradesh Gwachha
Management XII Topper (Boy)



To be a part of Khwopa Secondary School is one of the satisfactory decisions I had made. Fresh, Peaceful and wonderful environment along with well experienced teachers are the best part of this school. Teachers are really supportive and friendly towards students creating perfect environment for learning. I am very thankful to my teachers and whole Khwopa Secondary School team for their remarkable support in my study.

Rina Pahiju
Humanities Topper (Girl)



Khwopa is the name which never will be apart from me. Khwopa Secondary School had been my good guardian in finding my way to future, not only for me but for entire part of this institution. To be a part of Khwopa as the student of one of the most important faculty, 'Humanities' was my best decision. And that decision cleared my vision for heading ahead after finishing the precious two years of my life. There isn't any doubt that who else will become a part of this beautiful place, will never regret instead find themselves strong thinking. Khwopa had been their backbone for precious two years of their lifetime. Specially thanks to all the faculties of Humanities and entire Khwopa Secondary School Management team.

Prabin Lakhaju
Humanities Topper (Boy)



I feel truly blessed as I got a chance to be a part of this school. The impressive educational facilities including scholarships for deserving, also the extra-curricular activities and friendly and hardworking teachers strengthens the essence of this school. Above all "The continuous effort which this school makes to achieve excellence" is what I like most about it. Being a student our goal is to achieve good education with highest scores and better career opportunities in future. So choosing a school where you want to study really matters a lot and in my opinion Khwopa Sec. School is the BEST.

Saru Magaju
Management Topper (Girl)

One Graduate in One Family



Notice Board No.

1618-01-6614336



ख्वोपा

KHWOPA

Secondary School

Undertaking of Bhaktapur Municipality

www.khwopahss.edu.np

Dekocha, Bhaktapur-6, Nepal

Phone: 6618031, 6614336

Fax: 977-01-6615916

E-mail: info@khwopacollege.edu.np

